

RME 339.0

**STIHL**



<b>2 - 22</b>	Gebrauchsanleitung
<b>22 - 41</b>	Instruction Manual
<b>41 - 63</b>	Notice d'emploi
<b>63 - 83</b>	Istruzioni d'uso
<b>83 - 103</b>	Handleiding



- beschädigt sind.** Abgenutzte oder beschädigte Teile erhöhen das Verletzungsrisiko.
- e) **Kontrollieren Sie vor dem Gebrauch die Netzleitung und etwaige Verlängerungsleitungen auf Zeichen von Beschädigung oder Alterung.** Verwenden Sie den Rasenmäher nicht, falls die Leitung beschädigt oder abgenutzt ist. Wird die Netzleitung während des Betriebs beschädigt oder abgenutzt, schalten Sie den Rasenmäher aus und berühren Sie die Leitung nicht, bevor Sie den Netzstecker gezogen haben. Eine beschädigte Netz- oder Verlängerungsleitung kann zu elektrischem Schlag, Feuer und/oder ernsthaften Verletzungen führen.
- f) **Prüfen Sie die Grasfangeinrichtung regelmäßig auf Verschleiß oder Abnutzung.** Eine abgenutzte oder beschädigte Grasfangeinrichtung erhöht das Risiko von Verletzungen.
- g) **Belassen Sie Schutzabdeckungen an ihrem Platz. Schutzabdeckungen müssen einsatzfähig und ordnungsgemäß befestigt sein.** Eine lose, beschädigte oder nicht richtig funktionierende Schutzabdeckung kann zu Verletzungen führen.
- h) **Halten Sie Lufteintrittsöffnungen frei von Ablagerungen.** Blockierte Lufteinlässe und Ablagerungen können zu Überhitzung oder Brandgefahr führen.
- i) **Tragen Sie beim Betrieb des Rasenmähers immer rutschfeste Sicherheitsschuhe. Niemals barfuß oder mit offenen Sandalen arbeiten.** Dadurch vermindern Sie die Gefahr einer Fußverletzung beim Kontakt mit dem rotierenden Mähmesser.
- j) **Tragen Sie beim Betrieb des Rasenmähers immer lange Hosen.** Bloße Haut erhöht die Wahrscheinlichkeit von Verletzungen durch herausgeschleuderte Teile.
- k) **Betreiben Sie den Rasenmäher nicht in nassem Gras. Gehen Sie dabei, niemals rennen.** Dadurch verringern Sie die Gefahr auszurutschen und hinzufallen, was zu Verletzungen führen könnte.
- l) **Betreiben Sie den Rasenmäher nicht auf übermäßig steilen Hängen.** Damit wird das Risiko vermindert, die Kontrolle zu verlieren, auszurutschen und hinzufallen, was zu Verletzungen führen könnte.
- m) **Achten Sie beim Arbeiten an Abhängen auf einen sicheren Stand; arbeiten Sie immer quer zum Abhang, niemals aufwärts oder abwärts, und seien Sie extrem vorsichtig**

**beim Ändern der Arbeitsrichtung.** Damit wird das Risiko vermindert, die Kontrolle zu verlieren, auszurutschen und hinzufallen, was zu Verletzungen führen könnte.

- n) **Seien Sie besonders vorsichtig beim Rückwärtsmähen oder wenn Sie den Rasenmäher zu sich herziehen. Achten Sie immer auf die Umgebung.** Dies reduziert die Stolpergefahr während des Arbeitens.
- o) **Halten Sie die Netzleitung von den Mähmessern fern.** Eine beschädigte Netzleitung kann zu elektrischem Schlag, Feuer und/oder ernsthaften Verletzungen führen.
- p) **Schalten Sie den Mäher aus und ziehen Sie den Netzstecker, falls die Netzleitung sich verfangen hat oder beschädigt wurde.** Verfangene oder beschädigte Leitungen können das Risiko eines elektrischen Schlags erhöhen.
- q) **Berühren Sie keine Messer oder andere gefährliche Teile, die sich noch bewegen.** Damit vermindern Sie das Risiko einer Verletzung durch sich bewegende Teile.
- r) **Stellen Sie sicher, dass alle Schalter ausgeschaltet sind und der Netzstecker gezogen ist, bevor Sie eingeklemmtes Material entfernen oder den Rasenmäher reinigen.** Ein unerwarteter Betrieb des Rasenmähers kann zu ernsthaften Verletzungen führen.

## Contents

1	Introduction.....	23
2	Guide to Using this Manual.....	23
3	Overview.....	23
4	Safety Precautions.....	24
5	Preparing the Lawn Mower for Operation.	29
6	Assembling the Lawn Mower.....	29
7	Connecting the Lawn Mower to the Mains 31	
8	Switching the Lawn Mower On and Off.....	31
9	Checking the Lawn Mower.....	31
10	Operating the Lawn Mower.....	32
11	After Finishing Work.....	33
12	Transporting.....	34
13	Storing.....	34
14	Cleaning.....	34
15	Maintenance.....	35
16	Repairing.....	35
17	Troubleshooting.....	36
18	Specifications.....	37
19	Spare Parts and Accessories.....	38
20	Disposal.....	38

21 EC Declaration of Conformity..... 38  
 22 UKCA Declaration of Conformity..... 38  
 23 Addresses..... 39  
 24 General and Product-Specific Safety Instructions.....39

# 1 Introduction


Dear Customer,

Thank you for choosing STIHL. We develop and manufacture our quality products to meet our customers' requirements. The products are designed for reliability even under extreme conditions.

STIHL also stands for premium service quality. Our dealers guarantee competent advice and instruction as well as comprehensive service support.

STIHL expressly commit themselves to a sustainable and responsible handling of natural resources. This user manual is intended to help you use your STIHL product safely and in an environmentally friendly manner over a long service life.

We thank you for your confidence in us and hope you will enjoy working with your STIHL product.



Dr. Nikolas Stihl

**IMPORTANT! READ BEFORE USING AND KEEP IN A SAFE PLACE FOR REFERENCE.**

## 2 Guide to Using this Manual

### 2.1 Applicable Documents

This instruction manual is a translation of the original manufacturer's instructions in the sense of EC Directive 2006/42/EC.

Local safety regulations apply.

### 2.2 Warning Notices in Text

**!** **DANGER**

- This notice refers to risks which result in serious or fatal injury.
  - ▶ Serious or fatal injuries can be avoided by taking the precautions mentioned.


**!** **WARNING**

- This notice refers to risks which can result in serious or fatal injury.
  - ▶ Serious or fatal injuries can be avoided by taking the precautions mentioned.

**NOTICE**

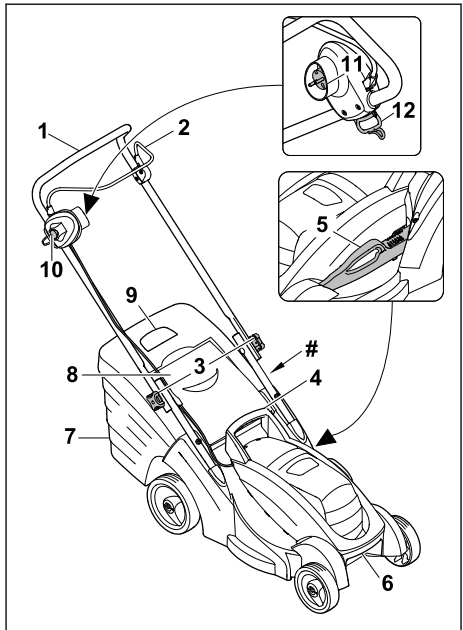
- This notice refers to risks which can result in damage to property.
  - ▶ Damage to property can be avoided by taking the precautions mentioned.

### 2.3 Symbols in Text

 This symbol refers to a chapter in this instruction manual.

## 3 Overview

### 3.1 Lawn Mower



**1 Handlebar**

The handlebar is used to hold, guide and transport the lawn mower.

**2 Control bar**

The control bar switches the blade on and off together with the locking button.

**3 Rotary handles**

The rotary handles clamp the upper handlebar onto the lower handlebar and are used to fold down the handlebar.

**4 Handle**

The handle is used to hold the lawn mower when adjusting the cutting height and to transport the lawn mower.

**5 Lever**

The lever is used to set the cutting height.

**6 Transport handle**

The transport handle is used to transport the lawn mower.

**7 Grass catcher box**

The grass catcher box collects the mown grass.

**8 Discharge flap**

The discharge flap closes off the discharge chute.

**9 Level indicator**

The level indicator shows how full the grass catcher box is.

**10 Locking button**

The locking button switches the blade on and off together with the control bar.

**11 Mains plug**

The mains plug connects the lawn mower to the extension cable.

**12 Aperture**

The aperture serves as strain relief for the cable connection.

**# Rating plate with machine number****3.2 Symbols**

The symbols can be on the lawn mower and have the following meaning:



**LWA** Guaranteed sound power level in accordance with Directive 2000/14/EC in dB(A) for the purpose of comparing the sound emissions of products.



Do not dispose of the product with domestic waste.



Protection class II power tool



Alternating current

**IPX4**

IP symbol



Deactivate the blade: ○

Activate the blade: |

**4 Safety Precautions****4.1 Warning Symbols****▲ WARNING**

The warning symbols on the lawn mower have the following meaning:



Follow the safety instructions and their measures.



Read, understand and keep the instruction manual.



Beware of objects being thrown up - keep a safe distance and keep other people away.



Do not touch a turning blade.



If the electric cable or extension cable is damaged: remove the mains plug from the socket. Follow the safety instructions on cleaning, transport, storage, maintenance and repair.



Keep the electric cable away from the cutting tool.



Protect the lawn mower from rain and moisture.

**4.2 Intended Use**

The STIHL RME 339.0 lawn mower is used to mow grass.

**▲ WARNING**

- Failure to use the lawn mower as intended may result in serious or fatal injury to people and damage to property.

- ▶ Use the lawn mower with an extension cable.
- ▶ Use the lawn mower as described in this instruction manual.

### 4.3 Requirements for the User

#### **▲ WARNING**

- Uninstructed users cannot recognise or evaluate the dangers posed by the lawn mower. This may result in serious or fatal injury to the user or other people.



- ▶ Read, understand and keep the instruction manual.
- ▶ If passing on the lawn mower to another person: provide them with the instruction manual also.
- ▶ Make sure that the user meets the following conditions:
  - The user is rested.
  - The user is physically, sensorily and mentally capable of operating the lawn mower and working with it. If the user is physically, sensorily or mentally impaired, the lawn mower must only be used under supervision or following instruction by a responsible person.
  - The user can recognise and evaluate the dangers posed by the lawn mower.
  - The user is aware that they are responsible for accidents and damage.
  - The user is of legal age or the user is being trained under supervision in a profession in accordance with national regulations.
  - The user has received instruction from a STIHL specialist dealer or a competent person before using the lawn mower for the first time.
  - The user is not impaired by alcohol, medicines or drugs.
- ▶ If anything is unclear: consult a STIHL specialist dealer.

### 4.4 Clothing and Equipment

#### **▲ WARNING**

- Objects may be thrown up at high velocity while working. This may result in injury to the user.
  - ▶ Wear long trousers made from resistant material.

- Dust may be stirred up while working. Breathing in dust may be harmful to health and cause allergic reactions.
  - ▶ If dust is stirred up: wear a dust mask.
- Unsuitable clothing may get caught on wood, briars and in the lawn mower. This may result in serious injury to the user.
  - ▶ Wear close-fitting clothing.
  - ▶ Remove scarves and jewellery.
- The user may come into contact with the blade during cleaning, maintenance or transport. This may result in injury to the user.
  - ▶ Wear protective gloves.
- Wearing unsuitable footwear may cause the user to slip. This may result in injury to the user.
  - ▶ Wear sturdy, closed-toed footwear with high-grip soles.
- Material particles may be expelled when sharpening the blade. This may result in injury to the user.
  - ▶ Wear close-fitting safety glasses. Suitable safety glasses are tested in accordance with EN 166 or national regulations and available commercially with the corresponding marking.
  - ▶ Wear protective gloves.

### 4.5 Work Area and Surroundings

#### 4.5.1 Lawn Mower

#### **▲ WARNING**

- Bystanding people, children and animals cannot recognise or evaluate the dangers posed by the lawn mower and objects expelled at high speed by the mower. This may result in serious injury to bystanding people, children and animals and damage to property.
  - ▶ Keep bystanding people, children and animals out of the work area.
  - ▶ Maintain a distance from objects.
  - ▶ Do not leave the lawn mower unattended.
  - ▶ Make sure that children cannot play with the lawn mower.
- Working in the rain may cause the user to slip. This may result in serious or fatal injury to the user.
  - ▶ Do not work when it is raining.
- The lawn mower is not waterproof. Working in the rain or in a damp environment may result in electric shock. This may result in injury to the user and damage to the lawn mower.
  - ▶ Do not work in the rain or in a damp environment.
  - ▶ Do not mow wet grass.

- Electrical components of the lawn mower may produce sparks. Sparks may cause fires and explosions in highly flammable or explosive environments. This may result in serious or fatal injury to people and damage to property.
  - ▶ Do not work in a highly flammable or explosive environment.
- People may trip over the extension cable. This may result in injury to people and damage to the lawn mower.
  - ▶ Route the extension cable so that it is easily visible and flat on the ground.

## 4.6 Safe Condition

### 4.6.1 Lawn Mower

The lawn mower is in safe condition when the following conditions are met:




- The lawn mower is free from damage.
- The extension cable and its mains plug are not damaged.
- The lawn mower is clean and dry.
- The controls are working and have not been modified.
- The blade is correctly attached.
- Genuine STIHL accessories for this lawn mower are attached.
- The accessories are correctly attached.

## ▲ WARNING

- If not in safe condition, components may no longer operate correctly and safety devices may be disabled. This may result in serious or fatal injury to people.
  - ▶ Do not use a damaged lawn mower.
  - ▶ Do not use a damaged extension cable and mains plug.
  - ▶ If the lawn mower is dirty or wet: clean the lawn mower and allow it to dry.
  - ▶ Do not modify the lawn mower.
  - ▶ If the controls are not working: do not use the lawn mower.
  - ▶ Attach genuine STIHL accessories for this lawn mower.
  - ▶ Attach the blade as described in this instruction manual.
  - ▶ Attach accessories as described in this instruction manual or in the instruction manual for the accessories.
  - ▶ Do not insert objects into the apertures in the lawn mower.
  - ▶ Replace worn or damaged warning signs.
  - ▶ If anything is unclear: consult a STIHL specialist dealer.

### 4.6.2 Blade

The blade is in safe condition when the following conditions are met:

- The blade and attachments are not damaged.
- The blade is not deformed.
- The blade is correctly attached.
- The blade is correctly sharpened.
- The blade is burr-free.
- The blade is correctly balanced.
- The minimum thickness of the blade has not been fallen below,  18.2.
- The grinding limit of the blade has not been exceeded,  18.2.
- The sharpening angle is observed,  18.2.

## ▲ WARNING

- In unsafe condition, blade parts may come loose and be expelled. This may result in serious injury to people.
  - ▶ Use an undamaged blade and attachments.
  - ▶ Attach the blade correctly.
  - ▶ Sharpen the blade correctly.
  - ▶ If the minimum thickness is fallen below: replace the blade.
  - ▶ If the grinding limit has been exceeded: replace the blade.
  - ▶ Have the blade balanced by a STIHL specialist dealer.
  - ▶ If anything is unclear: consult a STIHL specialist dealer.

## 4.7 Connection to the Mains

Contact with live components may result from the following causes:

- The extension cable is damaged.
- The mains plug of the extension cable is damaged.
- The socket is incorrectly installed.

## ▲ DANGER


- Contact with live components may result in an electric shock. This may result in serious or fatal injury to the user.

- ▶ Ensure that the extension cable or permanently connected power cable and their mains plugs are free from damage.



If the extension cable or permanently connected power cable is damaged:

- ▶ Do not touch damaged areas.
- ▶ Remove the mains plug from the socket.
- ▶ Have a STIHL specialist dealer replace the permanently connected power cable.
- ▶ Ensure that your hands are dry when touching the extension cable and its mains plug.

- ▶ Insert the mains plug of the extension cable into a correctly installed and fused socket with an earth contact.
- ▶ Connect the lawn mower using a residual current device (30 mA, 30 ms).
- A damaged or unsuitable extension cable may result in an electric shock. This may result in serious or fatal injury to people.
  - ▶ Use an extension cable with the correct cable cross section,  18.
  - ▶ Use a splash-proof extension cable approved for outdoor use.

## WARNING

- An incorrect mains voltage or an incorrect mains frequency while working may lead to overvoltage in the lawn mower. This may result in damage to the lawn mower.
  - ▶ Ensure that the mains voltage and the mains frequency of the power supply correspond to the information contained in the rating plate on the lawn mower.
- If several electrical appliances are connected to a power strip, electrical components may become overloaded while working. The electrical components may heat up and cause a fire. This may result in serious or fatal injury to people and damage to property.
  - ▶ Only connect one lawn mower to a socket.
  - ▶ Do not connect a lawn mower to power strips.
- An incorrectly routed extension cable may become damaged and people may trip over it. This may result in injury to people and damage to the extension cable.
  - ▶ Route the extension cable so that it cannot touch the lawn mower.
  - ▶ Route and mark the extension cable so that people cannot trip over it.
  - ▶ Route the extension cable so that it is not stretched or tangled.
  - ▶ Route the extension cable so that it does not become damaged, kinked or crushed or chafe.
  - ▶ Protect the extension cable from heat, oil and chemicals.
  - ▶ Route the extension cable on dry ground.
- The extension cable warms up while working. If the heat cannot dissipate, it may cause a fire.
  - ▶ If using a cable reel: uncoil the cable reel fully.

## 4.8 Working

### WARNING

- In certain situations, the user may no longer be able to concentrate on their work. This may result in the user stumbling, falling and becoming seriously injured.
  - ▶ Work calmly and carefully.
  - ▶ If the light and visibility conditions are poor: do not use the lawn mower.
  - ▶ Operate the lawn mower alone.
  - ▶ Watch out for obstacles.
  - ▶ Do not tilt the lawn mower.
  - ▶ Work standing on the ground and maintain balance.
  - ▶ If signs of fatigue occur: take a break.
  - ▶ If mowing on a slope: mow across the slope.
  - ▶ Do not work on slopes with an inclination greater than 25° (46.6%).
- The turning blade may cut the user. This may result in serious injury to the user.



- ▶ Do not touch a turning blade.
  - ▶ If the blade is blocked by an object: switch the lawn mower off and detach the extension cable connector from the mains plug of the lawn mower. Only then remove the object.
- If the lawn mower changes or starts to behave differently when working, it may not be in safe condition. This may result in serious injury to people and damage to property.
  - ▶ Finish working, switch the lawn mower off, detach the extension cable connector from the mains plug of the lawn mower and consult a STIHL specialist dealer.
- The lawn mower may cause vibrations when working.
  - ▶ Wear protective gloves.
  - ▶ Take breaks.
  - ▶ If signs of a circulatory disturbance occur: consult a doctor.
- If the blade hits a foreign object when working, the foreign object or parts of it may be damaged or thrown up at high velocity. This may result in injury to people and damage to property.
  - ▶ Remove foreign objects from the work area.
- When the control bar is released, the blade continues to turn for a short time. This may result in serious injury to people.
  - ▶ Wait until the blade is no longer turning.
- Sparks may be produced if the turning blade hits a hard object. Sparks may cause fires in highly flammable environments. This may



result in serious or fatal injury to people and damage to property.

- ▶ Do not work in a highly flammable environment.
- If the lawn mower is stopped on a sloping surface, it may unintentionally roll away. This may result in injury to people and damage to property.
  - ▶ Only let go of the lawn mower if it is on a level surface and cannot roll away by itself.
- If objects are attached to the handlebar, the additional weight may cause the lawn mower to tip over. This may result in injury to people and damage to property.
  - ▶ Do not attach objects to the handlebar.

## **▲ DANGER**

- If working near live wires, the blade may come into contact with the live wires and damage them. This may result in serious or fatal injury to the user.
  - ▶ Do not work near live wires.
- The user may be struck by lightning if working during a thunderstorm. This may result in serious or fatal injury to the user.
  - ▶ Do not work during thunderstorms.

## 4.9 Transporting

### 4.9.1 Transporting

## **▲ WARNING**

- The lawn mower may tip over or move during transport. This may result in injury to people and damage to property.
  - ▶ Switch the lawn mower off and detach the extension cable connector from the mains plug of the lawn mower.
  - ▶ Wait until the blade is no longer turning.
  - ▶ Secure the lawn mower with lashing straps, belts or a net so it cannot tip over and move.

## 4.10 Storing

### 4.10.1 Storing

## **▲ WARNING**

- Children cannot recognise or evaluate the dangers posed by the lawn mower. There is a risk of serious injury to children.
  - ▶ Unplug the mains plug of the extension cable from the socket.
  - ▶ Detach the extension cable connector from the mains plug of the lawn mower.
  - ▶ Keep the lawn mower out of reach of children.

- Moisture may cause corrosion to the electrical contacts on the lawn mower and metal components. This may result in damage to the lawn mower.
  - ▶ Unplug the mains plug of the extension cable from the socket.
  - ▶ Detach the extension cable connector from the mains plug of the lawn mower.
  - ▶ Keep the lawn mower clean and dry.
- If the lawn mower is kept on a sloping surface, it may unintentionally roll away. This may result in injury to people and damage to property.
  - ▶ The lawn mower should only be kept on level surfaces.

## 4.11 Cleaning, Maintenance and Repair

## **▲ WARNING**

- If the mains plug is plugged into a socket during cleaning, maintenance or repair, the lawn mower may unintentionally be switched on. This may result in serious injury to people and damage to property.



- ▶ Unplug the mains plug of the extension cable from the socket.
- ▶ Detach the extension cable connector from the mains plug of the lawn mower.
- ▶ Wait until the blade is no longer turning.
- Abrasive cleaning agents or using a water jet or sharp objects for cleaning may result in damage to the lawn mower or blade. If the lawn mower and blade are not cleaned correctly, components may no longer operate correctly and safety devices may be disabled. This may result in serious injury to people.
  - ▶ Clean the lawn mower and blade as described in this instruction manual.
- If the lawn mower or blade is not maintained or repaired correctly, components may no longer operate correctly and safety devices may be disabled. This may result in serious or fatal injury to people.
  - ▶ Do not maintain or repair the lawn mower yourself.
  - ▶ If the lawn mower needs to be maintained or repaired: consult a STIHL specialist dealer.
  - ▶ Maintain the blade as described in this instruction manual.
- The user may cut themselves on sharp cutting edges during blade cleaning, maintenance or repair. This may result in injury to the user.



- ▶ Wear protective gloves.
- The blade may become hot during sharpening. This may result in the user burning themselves.
  - ▶ Wait until the blade has cooled down.
  - ▶ Wear protective gloves.
- The blade on the lawn mower is movable even when the engine is switched off. During maintenance of the blade, the user may be injured by the moving blade.
  - ▶ Work carefully.
  - ▶ Wear protective gloves.
- The blade on the lawn mower is movable. During blade maintenance, the user may trap their fingers between the moving blade and fixed parts of the lawn mower.
  - ▶ Work carefully.
  - ▶ Wear protective gloves.

## 5 Preparing the Lawn Mower for Operation

### 5.1 Preparing the Lawn Mower for Operation

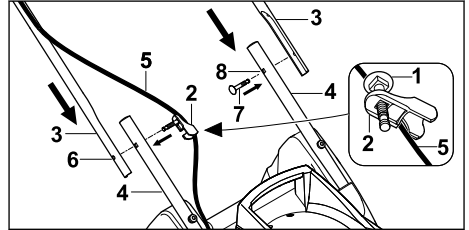
The following steps must be performed before commencing work:

- ▶ Remove packaging material and transport locks.
- ▶ Make sure that the following components are in safe condition:
  - Lawn mower, 4.6.1.
  - Blade, 4.6.2.
- ▶ Clean the lawn mower, 14.2.
- ▶ Check the blade, 9.2.
- ▶ Attach the handlebar, 6.1.
- ▶ Fold up the handlebar, 6.2.1.
- ▶ Connect the mains plug of the lawn mower to an extension cable, 7.1.
- ▶ Plug the mains plug of the extension cable into an easily accessible socket.
- ▶ If mowing and the mown grass is to be collected in the grass catcher box: attach the grass catcher box, 6.3.2.
- ▶ If mowing and the mown grass is to be ejected to the rear: detach the grass catcher box, 6.3.2.
- ▶ Set the cutting height, 10.2.
- ▶ Check the controls, 9.1.
- ▶ If the steps cannot be performed: do not use the lawn mower and consult a STIHL specialist dealer.

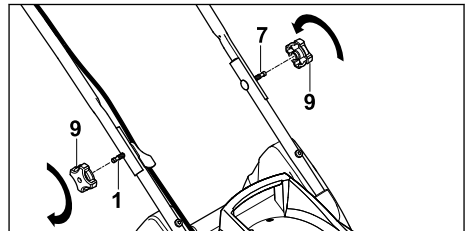
## 6 Assembling the Lawn Mower

### 6.1 Attaching the Handlebar

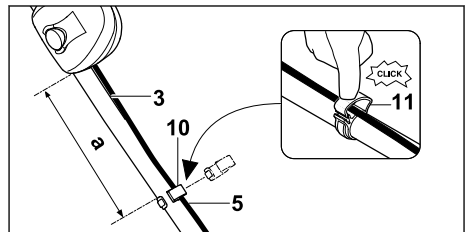
- ▶ Switch the lawn mower off.
- ▶ Detach the extension cable connector from the mains plug of the lawn mower.
- ▶ Place the lawn mower on a level surface.



- ▶ Push bolt (1) through the bore in cable guide (2).
- ▶ Hold upper handlebars (3) against lower handlebars (4) so the bores align.
- ▶ On the side where the cable is located, hook cable guide (2) onto cable (5).
- ▶ Push the bolt with cable guide (2) through bore (6) from the inside to the outside.
- ▶ On the other side, push bolt (7) through bore (8) from the inside to the outside.



- ▶ Put rotary handles (9) on bolts (1 and 7) and screw them in and tighten them.



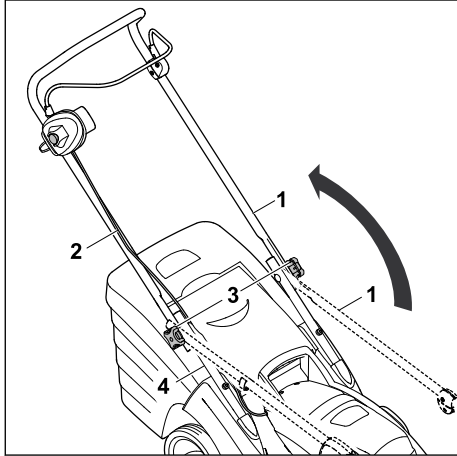
- ▶ Install cable clip (10) on upper handlebar (3) so the following condition is met:
  - Distance (a) is between 25 cm and 27 cm.
- ▶ Place cable (5) into cable clip (10).
- ▶ Close tab (11) and allow it to engage.

The handlebar must not be dismantled again.

## 6.2 Folding Up and Folding the Handlebar

### 6.2.1 Folding Up the Handlebar

- ▶ Switch the lawn mower off.
- ▶ Detach the extension cable connector from the mains plug of the lawn mower.
- ▶ Place the lawn mower on a level surface.

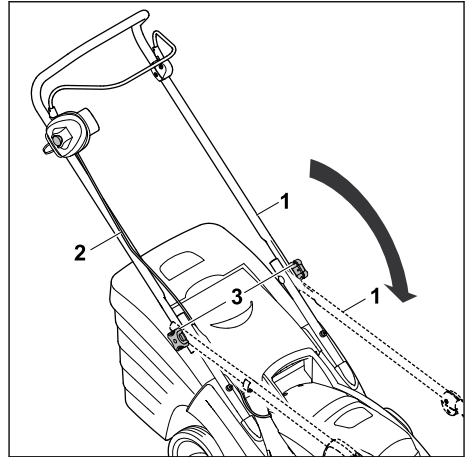


- ▶ Fold up upper handlebar (1) and hold with one hand. Make sure that cable (2) is not damaged.
- ▶ Tighten rotary handles (3). Upper handlebar (1) is firmly attached to lower handlebar (4).

### 6.2.2 Folding the Handlebar

The handlebar can be folded for space-saving transport or storage.

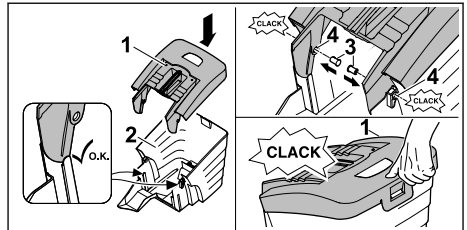
- ▶ Switch the lawn mower off.
- ▶ Detach the extension cable connector from the mains plug of the lawn mower.
- ▶ Place the lawn mower on a level surface.



- ▶ Unscrew rotary handles (3) until they turn freely.
- ▶ Fold down upper handlebar (1) forwards, ensuring that cable (2) is not damaged.

## 6.3 Assembling, Attaching and Detaching the Grass Catcher Box

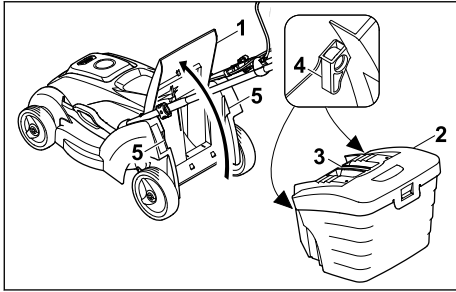
### 6.3.1 Assembling the Grass Catcher Box



- ▶ Fit upper part of grass catcher box (1) onto lower part of grass catcher box (2).
- ▶ Press pins (3) through openings (4) from the inside. The pins engage audibly.
- ▶ Press upper part of grass catcher box (1) downwards. The upper part of the grass catcher box engages with a click.

### 6.3.2 Attaching the Grass Catcher Box

- ▶ Switch the lawn mower off.
- ▶ Detach the extension cable connector from the mains plug of the lawn mower.
- ▶ Place the lawn mower on a level surface.



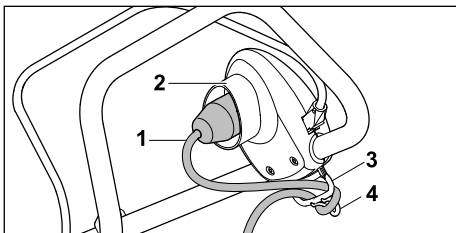
- ▶ Open discharge flap (1) and hold it open.
- ▶ Take hold of grass catcher box (2) by handle (3) and attach to mounts (5) using hooks (4).
- ▶ Set down discharge flap (1) on grass catcher box (2).

### 6.3.3 Detaching the Grass Catcher Box

- ▶ Switch the lawn mower off.
- ▶ Detach the extension cable connector from the mains plug of the lawn mower.
- ▶ Place the lawn mower on a level surface.
- ▶ Open the discharge flap and hold it open.
- ▶ Remove the grass catcher box upwards by the handle.
- ▶ Close the discharge flap.

## 7 Connecting the Lawn Mower to the Mains

### 7.1 Connecting the Lawn Mower to the Mains

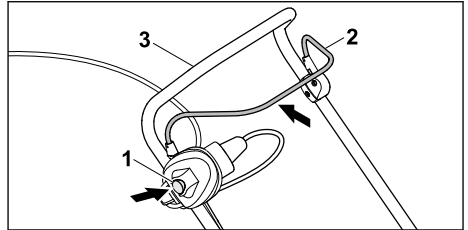


- ▶ Insert extension cable connector (1) into mains plug (2) of the lawn mower.
- ▶ Pull the cable loop through aperture (3).
- ▶ Fasten the cable loop to hook (4). The cable connection features strain relief.
- ▶ Plug the mains plug of the extension cable into a correctly installed socket.

## 8 Switching the Lawn Mower On and Off

### 8.1 Switching the Lawn Mower On

- ▶ Ensure that the extension cable is routed in such a way that it is visible and always behind the lawn mower.
- ▶ Do not tilt the lawn mower.
- ▶ Place the lawn mower on a level surface.



- ▶ Press locking button (1) with the right hand and hold.
- ▶ Pull control bar (2) with the left hand fully in the direction of handlebar (3) and hold so the thumb encloses handlebar (3). The blade turns.
- ▶ Release locking button (1).
- ▶ Hold handlebar (3) and control bar (2) with the right hand so the thumb encloses handlebar (3).

### 8.2 Switching the Lawn Mower Off

- ▶ Release the control bar.
- ▶ Wait until the blade is no longer turning.
- ▶ If the blade continues to turn: detach the extension cable connector from the mains plug of the lawn mower and consult a STIHL specialist dealer. The lawn mower is defective.

## 9 Checking the Lawn Mower

### 9.1 Checking the Controls


#### Locking button and control bar

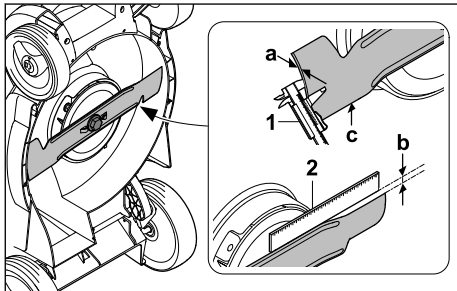
- ▶ Switch the lawn mower off.
- ▶ Detach the extension cable connector from the mains plug of the lawn mower.
- ▶ Press the locking button and release it again.
- ▶ Pull the control bar fully in the direction of the handlebar and release it again.
- ▶ If the locking button or the control bar is stiff or does not spring back into the initial position: do not use the lawn mower and consult a STIHL specialist dealer. The locking button or the control bar is defective.




### Switching the lawn mower on

- ▶ Connect the lawn mower to a socket using an extension cable.
- ▶ Press the locking button with the right hand and hold.
- ▶ Pull the control bar with the left hand fully in the direction of the handlebar and hold so the thumb encloses the handlebar.  
The blade turns.
- ▶ If the blade does not turn: switch the lawn mower off, detach the extension cable connector from the mains plug of the lawn mower and consult a STIHL specialist dealer.  
The lawn mower is defective.
- ▶ Release the locking button and control bar.  
The blade stops turning after a short time.
- ▶ If the blade continues to turn: detach the extension cable connector from the mains plug of the lawn mower and consult a STIHL specialist dealer.  
The lawn mower is defective.

## 9.2 Checking the Blade

- ▶ Switch the lawn mower off.
- ▶ Detach the extension cable connector from the mains plug of the lawn mower.
- ▶ Upend the lawn mower,  14.1.

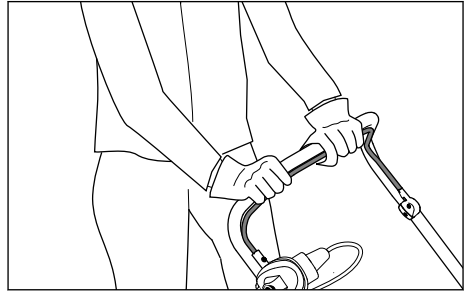


- ▶ Measure the following:
  - Thickness a
  - Grinding limit b
  - Sharpening angle c
- ▶ Check the thickness (a) at several points on the blade using a slide calliper (1).  
If the minimum thickness is fallen below:  
replace the blade,  18.2
- ▶ Place a ruler (2) against the front blade edge and measure grinding limit (b).  
If the permissible grinding limit is reached:  
replace the blade,  18.2
- ▶ If the sharpening angle (c) is not correct:  
sharpen the blade,  18.2.

- ▶ If anything is unclear: consult a STIHL specialist dealer.

## 10 Operating the Lawn Mower

### 10.1 Holding and Guiding the Lawn Mower



- ▶ Hold the handlebar with both hands so the thumbs enclose the handlebar.

### 10.2 Setting the Cutting Height

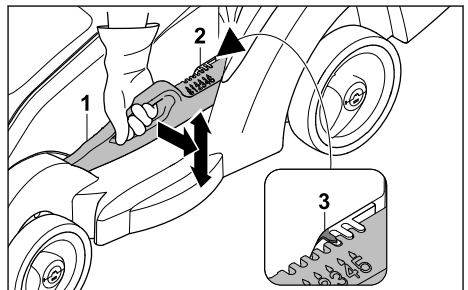
The following cutting heights can be set:

- 20 mm = position S<sup>2</sup>
- 30 mm = position 1
- 40 mm = position 2
- 50 mm = position 3
- 60 mm = position 4
- 70 mm = position 5

The positions are indicated on the lawn mower.

#### Setting the cutting height

- ▶ Switch the lawn mower off.  
The blade must not be turning.
- ▶ Place the lawn mower on a level surface.



- ▶ Hold the lawn mower at the handle.
- ▶ Push lever (1) away from the lawn mower slightly and hold.

<sup>2</sup>Not available for all country variants.

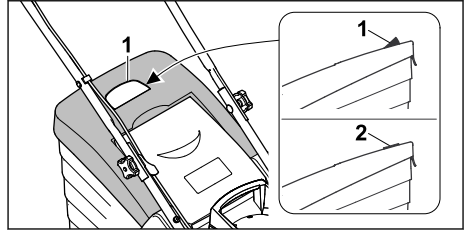
- ▶ Move the lawn mower to the desired position by raising and lowering the lever. The current cutting height can be read off at cutting height indicator (2) by means of marking (3).
- ▶ Release lever (1). The lawn mower engages.

### 10.3 Mowing



- ▶ Push the lawn mower forwards slowly and in a controlled manner.
- ▶ If a foreign object is hit during mowing and the blade is blocked:
  - ▶ Switch the lawn mower off.
  - ▶ Detach the extension cable connector from the mains plug of the lawn mower.
  - ▶ Make sure that all moving parts have come to a complete stop.
  - ▶ Check the lawn mower.
  - ▶ If repairs are required: consult a STIHL specialist dealer.
- ▶ If the lawn mower begins to vibrate strongly:
  - ▶ Switch the lawn mower off.
  - ▶ Detach the extension cable connector from the mains plug of the lawn mower.
  - ▶ Check the lawn mower.
  - ▶ Check that all nuts, bolts, screws and pins are tight.
  - ▶ If repairs are required: consult a STIHL specialist dealer.

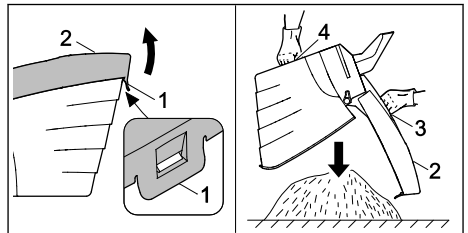
### 10.4 Emptying the Grass Catcher Box



The flow of air generated by the blade raises level indicator (1). The flow of air stops when the grass catcher box is full. If the flow of air is too low, level indicator (2) returns to its resting state. This is a prompt to empty the grass catcher box.

The functionality of the level indicator is restricted if the flow of air is impaired. External influences such as wet, dense or high grass, low cutting levels, dirt or the like can impair the flow of air and the functionality of the level indicator.

- ▶ If the level indicator drops to its resting state: empty the grass catcher box.
- ▶ Switch the lawn mower off.
- ▶ Detach the extension cable connector from the mains plug of the lawn mower.
- ▶ Detach the grass catcher box.



- ▶ Open tab (1).
- ▶ Open and hold upper part of grass catcher box (2) by handle (3).
- ▶ Hold lower handle (4) with the second hand.
- ▶ Empty the grass catcher box.
- ▶ Close the grass catcher box.
- ▶ Attach the grass catcher box.

## 11 After Finishing Work

### 11.1 After Finishing Work

- ▶ Switch the lawn mower off.
- ▶ Detach the extension cable connector from the mains plug of the lawn mower.
- ▶ Place the lawn mower on a level surface.
- ▶ If the lawn mower is wet: allow it to dry.
- ▶ Clean the lawn mower.

## 12 Transporting

### 12.1 Transporting the Lawn Mower

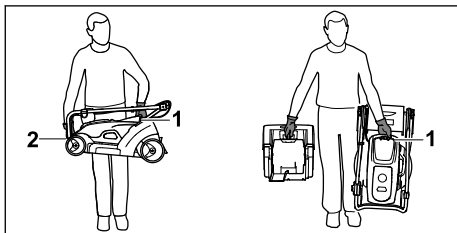
- ▶ If the lawn mower is moved to and from the area to be mowed:
  - ▶ Switch the lawn mower off.  
The blade must not be turning.
  - ▶ Detach the extension cable connector from the mains plug.
- ▶ If the lawn mower must be tilted for transport over areas other than grass:
  - ▶ Switch the lawn mower off.  
The blade must not be turning.
  - ▶ Detach the extension cable connector from the mains plug.

#### Pushing the lawn mower

- ▶ Push the lawn mower forwards slowly and in a controlled manner.

#### Carrying the lawn mower

- ▶ Wear protective gloves.



- ▶ If only the lawn mower is being carried:
  - ▶ Fold down the handlebar.
  - ▶ Hold the lawn mower with one hand on transport handle (1) and the other hand on housing (2).
  - ▶ Lift and carry the lawn mower.
- ▶ If the lawn mower and grass catcher box are to be carried at the same time:
  - ▶ Hold the lawn mower with one hand on transport handle (1).
  - ▶ Lift the lawn mower and carry to the side of the body.

#### Transporting the lawn mower in a vehicle

- ▶ Secure the lawn mower upright so it does not tip over and cannot move.

## 13 Storing



### 13.1 Storing the Lawn Mower

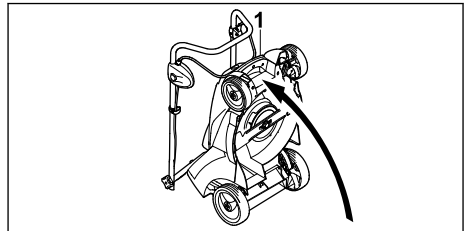
- ▶ Switch the lawn mower off.
- ▶ Detach the extension cable connector from the mains plug of the lawn mower.
- ▶ Allow the lawn mower to cool down.
- ▶ Empty the grass catcher box.

- ▶ Place the lawn mower on a level surface.
- ▶ Set the transport position.
- ▶ Store the lawn mower in accordance with the following conditions:
  - The lawn mower is out of reach of children.
  - The lawn mower is clean and dry.

## 14 Cleaning


### 14.1 Upending the Lawn Mower

- ▶ Switch the lawn mower off.
- ▶ Detach the extension cable connector from the mains plug of the lawn mower.
- ▶ Place the lawn mower on a level surface.
- ▶ Detach the grass catcher box.
- ▶ Set the cutting height to the lowest setting,  10.2.
- ▶ Fold down the handlebar.  6.2.2.



- ▶ Hold the lawn mower at transport handle (1) and upend.

### 14.2 Cleaning the Lawn Mower

- ▶ Switch the lawn mower off.
- ▶ Detach the extension cable connector from the mains plug of the lawn mower.
- ▶ Allow the lawn mower to cool down.
- ▶ Clean the lawn mower with a damp cloth.
- ▶ Clean the discharge chute with a soft brush or a damp cloth.
- ▶ Clean the electrical contacts on the lawn mower with a paintbrush or a soft brush.
- ▶ Clean the ventilation slots with a paintbrush.
- ▶ Upend the lawn mower,  14.1.  
Clean the area around the blade and the blade with a stick, a soft brush or a damp cloth.

#### NOTICE

- Using a high-pressure cleaner or a water jet for cleaning can damage the machine.
  - ▶ Do not clean the machine with a high-pressure cleaner or a water jet.

## 15 Maintenance

### 15.1 Maintenance Interval

The maintenance interval is dependent on the ambient conditions and the working conditions. STIHL recommends the following maintenance interval:

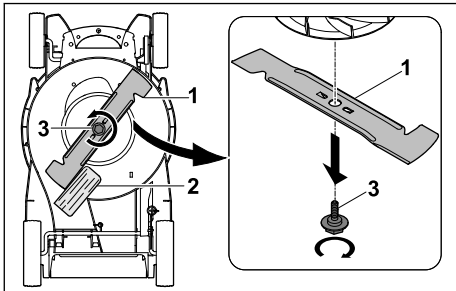
#### Annual

- ▶ Have the lawn mower serviced by a STIHL specialist dealer.

### 15.2 Removing and Attaching the Blade

#### 15.2.1 Removing the Blade

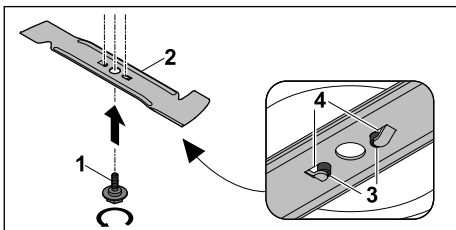
- ▶ Switch the lawn mower off.
- ▶ Detach the extension cable connector from the mains plug of the lawn mower.
- ▶ Upend the lawn mower.



- ▶ Block blade (1) using a piece of wood (2).
- ▶ Unscrew screw (3) in the direction of the arrow and remove.
- ▶ Remove blade (1).
- ▶ Discard screw (3).  
Use a new screw to attach blade (1).

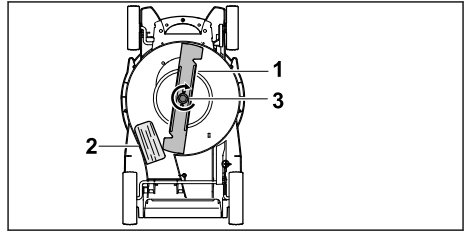
#### 15.2.2 Attaching the Blade

- ▶ Switch the lawn mower off.
- ▶ Detach the extension cable connector from the mains plug of the lawn mower.
- ▶ Upend the lawn mower.



- ▶ Apply Loctite 243 thread locker to the thread of new screw (1).

- ▶ Position blade (2) so that the raised areas on contact area (3) engage in notches (4).
- ▶ Screw in screw (1).



- ▶ Block blade (1) using a piece of wood (2).
- ▶ Tighten screw (3) to 10-15 Nm.

### 15.3 Sharpening and Balancing the Blade

Sharpening and balancing the blade correctly requires a lot of practice.

STIHL recommends having the blade sharpened and balanced by a STIHL specialist dealer.

The current addresses of the specialist dealers can be found under the respective STIHL country representative at [www.stihl.com](http://www.stihl.com).

#### ⚠ WARNING

- The cutting edges of the blade are sharp. This may result in the user cutting themselves.
  - ▶ Wear protective gloves.

- ▶ Switch the lawn mower off.
- ▶ Detach the extension cable connector from the mains plug of the lawn mower.
- ▶ Upend the lawn mower.
- ▶ Remove the blade.
- ▶ Sharpen the blade. Observe the sharpening angle and cool the blade, 18.2. Bluing of the blade during sharpening is not permitted.
- ▶ Attach the blade.
- ▶ If anything is unclear: consult a STIHL specialist dealer.

## 16 Repairing

### 16.1 Repairing the Lawn Mower

The user should not repair the lawn mower or blade themselves.
















- ▶ If the lawn mower or blade is damaged: do not use the lawn mower or blade and consult a STIHL specialist dealer.







- ▶ If warning signs are illegible or damaged: have the warning signs replaced by a STIHL specialist dealer.

## 17 Troubleshooting

### 17.1 Remediating Lawn Mower Faults

Fault	Cause	Remedy
The lawn mower does not start when switched on.	The plug or extension cable connector are not plugged in.	▶ Insert the plug or extension cable connector,  7.
	The circuit breaker (fuse) or the residual current device tripped. The circuit is electrically overloaded or defective.	▶ Find and fix the cause of the circuit breaker or RCD tripping. Insert the circuit breaker (fuse) or residual current device. ▶ Switch other power consumers in the same circuit off.
	The fuse protection of the socket is too low.	▶ Insert the plug of the extension cable into a correctly fused socket,  18.
	The cross section of the extension cable is incorrect.	▶ Use an extension cable with an adequate cable cross section,  18.
	The extension cable is too long.	▶ Use an extension cable with the correct length,  18.
	The engine is overheated.	▶ Clean the lawn mower,  14. ▶ Allow the lawn mower to cool down.
	The resistance at the blade is too great.	▶ Set a higher cutting height,  10.2. ▶ Switch the lawn mower on in lower grass.
	The area around the blade is blocked.	▶ Clean the lawn mower,  14.
The lawn mower stops during operation.	GB country-specific version: The fuse in the plug is faulty.	▶ Replace the fuse in the plug.
	The plug or extension cable connector are no longer plugged in.	▶ Insert the plug or extension cable connector,  7.
	The circuit breaker (fuse) or the residual current device tripped. The circuit is electrically overloaded or defective.	▶ Find and fix the cause of the circuit breaker or RCD tripping. Insert the circuit breaker (fuse) or residual current device. ▶ Switch other power consumers in the same circuit off.
	The fuse protection of the socket is too low.	▶ Insert the plug of the extension cable into a correctly fused socket,  18.
	The overload protection has triggered.	▶ Allow the lawn mower to cool down. Cooling time up to 10 minutes. ▶ Clean the lawn mower,  14. ▶ Guide the lawn mower more slowly. ▶ Set a higher cutting height,  10.2. ▶ Mow shorter grass. ▶ Sharpen the blade,  15.3. ▶ Use an extension cable with the correct length,  18. ▶ Use an extension cable with an adequate cable cross section,  18.
	The blade is blocked.	▶ Clean the lawn mower,  14.

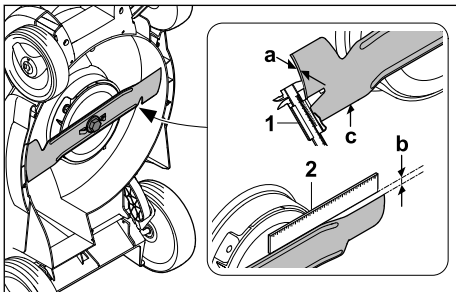
Fault	Cause	Remedy
The lawn mower vibrates excessively during operation.	The blade fastening screw is loose.	▶ Tighten the screw,  15.2.2.
	The blade is not correctly balanced.	▶ Sharpen and balance the blade,  15.3.
The grass has not been cut cleanly or the lawn is yellow.	The blade is blunt or worn.	▶ Sharpen and balance the blade,  15.3.
	The resistance at the blade is too great.	▶ Set a higher cutting height,  10.2. ▶ Mow shorter grass.

## 18 Specifications

### 18.1 Lawn Mower STIHL RME 339.0

- Power supply: See rating plate
- Frequency: See rating plate
- Power input: 1200 W
- Weight (m) with grass catcher box: 14 kg
- GB country-specific version:  
Weight (m) with connection cable and grass catcher box: 15 kg
- Maximum grass catcher box capacity: 40 l
- Working width: 37 cm
- Speed (n): 3200 rpm
- Electrical protection class: II
- Electrical type of protection: IPX4

### 18.2 Blade



- Minimum thickness a: 1,6 mm
- Maximum grinding limit b: 5 mm
- Sharpening angle c: 30°

### 18.3 Extension Cords

If an extension cord is used, it must have a ground wire and the wire gage of its conductors must meet the following minimum requirements – depending on the line voltage and length of the extension cord:

**If rated voltage on the rating label is 220V to 240V:**

- Cord length up to 20 m: AWG 15 / 1.5 mm<sup>2</sup>
- Cord length 20 m up to 50 m: AWG 13 / 2.5 mm<sup>2</sup>

**If rated voltage on the rating label is 100 V to 127 V:**

- Cord length up to 10 m: AWG 14 / 2.0 mm<sup>2</sup>
- Cord length 10 m up to 30 m: AWG 12 / 3.5 mm<sup>2</sup>

### 18.4 Sound Values and Vibration Values

The K value for the sound pressure level is 1 dB(A). The K value for the sound power level is 0,9 dB(A). The K value for the vibration value is 0,6 m/s<sup>2</sup>.

- Sound pressure level  $L_{pA}$  measured in accordance with EN IEC 62841-4-3: 79 dB(A)
- Guaranteed sound power level  $L_{WA,d}$  measured in accordance with 2000/14/EC / S.I. 2001/1701: 93 dB(A)
- Vibration value  $a_{HV}$  measured in accordance with EN IEC 62841-4-3, handlebar: 1,20 m/s<sup>2</sup>

The indicated vibration values were measured in accordance with a standardised test method and can be used for the purpose of comparing electrical appliances. The actual vibration values that occur may deviate from the indicated values, depending on the type of application. The indicated vibration values can be used for an initial assessment of the vibration load. The actual vibration load must be assessed. Times during which the electrical appliance is switched off, along with times during which it is switched on but running without load, can also be taken into consideration.

For information on compliance with Employers' Vibration Directive 2002/44/EC and S.I. 2005/1093, see [www.stihl.com/vib](http://www.stihl.com/vib).


## 18.5 REACH

REACH is an EC regulation and stands for the Registration, Evaluation, Authorisation and Restriction of Chemical substances.

For information on compliance with the REACH regulation see [www.stihl.com/reach](http://www.stihl.com/reach).

## 19 Spare Parts and Accessories

### 19.1 Spare parts and accessories

**STIHL**  These symbols indicate original STIHL spare parts and original STIHL accessories.

STIHL recommends the use of original STIHL spare parts and accessories.

Despite ongoing market observation, STIHL is unable to judge the reliability, safety and suitability of other manufacturers' spare parts and accessories; accordingly, STIHL cannot warrant for the use of those parts.

Original STIHL spare parts and original STIHL accessories are available from STIHL dealers.

### 19.2 Essential Spare Parts

- Blade: 6320 702 0100
- Blade fastening screw: 6310 760 2801

## 20 Disposal

### 20.1 Disposing of the Lawn Mower

Information on disposal is available from your local authority or from a STIHL dealer.

Improper disposal may be harmful to health and pollute the environment.

- ▶ Take STIHL products including packaging to a suitable collection point for recycling in accordance with local regulations.
- ▶ Do not dispose of the product with domestic waste.

## 21 EC Declaration of Conformity

### 21.1 STIHL Lawn Mower RME 339.0

STIHL Tirol GmbH  
Hans Peter Stihl-Strasse 5  
6336 Langkampfen

Austria

declares under our sole responsibility that

- design: electric lawn mower
- manufacturer's brand: STIHL
- type: RME 339.0
- cutting width: 37 cm
- serial number: 6320

complies with the relevant provisions of Directives 2000/14/EC, 2006/42/EC, 2014/30/EU and 2011/65/EU and has been developed and manufactured in accordance with the versions of the following standards valid on the date of manufacture: EN 62841-1, EN IEC 62841-4-3, EN 55014-1 and EN 55014-2.

Notified body involved:

TÜV Rheinland LGA Products GmbH  
Tillystrasse 2  
90431 Nuremberg, Germany

The measured and guaranteed sound power levels were determined in accordance with Directive 2000/14/EC, Appendix VIII.

- Measured sound power level: 92,5 dB(A)
- Guaranteed sound power level: 93 dB(A)

The technical documents are stored at STIHL Tirol GmbH.

The year of manufacture and machine number are indicated on the lawn mower.

Langkampfen, 22.04.2024

STIHL Tirol GmbH



p.p.

Matthias Fleischer, Head of Product Development



p.p.

Sven Zimmermann, Head of Quality Department

## 22 UKCA Declaration of Conformity

### 22.1 STIHL Lawn Mower RME 339.0

STIHL Tirol GmbH  
Hans Peter Stihl-Strasse 5  
6336 Langkampfen

Austria

declares under our sole responsibility that

- design: electric lawn mower

- manufacturer's brand: STIHL
- type: RME 339.0
- cutting width: 37 cm
- serial number: 6320

complies with the relevant provisions of the UK regulations Noise Emission in the Environment by Equipment for use Outdoors Regulations 2001, Supply of Machinery (Safety) Regulations 2008, Electromagnetic Compatibility Regulations 2016 and The Restriction of the Use of Certain Hazardous Substances in Electronic Equipment Regulations 2012 and has been developed and manufactured in accordance with the versions of the following standards valid on the date of manufacture: EN 62841-1, EN IEC 62841-4-3, EN 55014-1 and EN 55014-2.

Notified body involved:  
TUV Rheinland UK Ltd  
1011 Stratford Road  
Solihull, B90 4BN

The measured and guaranteed sound power levels were determined in accordance with the UK regulation Noise Emission in the Environment by Equipment for use Outdoors Regulations 2001, Schedule 11.

- Measured sound power level: 92,5 dB(A)
- Guaranteed sound power level: 93 dB(A)

The technical documents are stored at STIHL Tirol GmbH.

The year of manufacture and machine number are indicated on the lawn mower.

Langkampfen, 22.04.2024

STIHL Tirol GmbH

p.p. 

Matthias Fleischer, Head of Product Development

p.p. 

Sven Zimmermann, Head of Quality Department

## 23 Addresses

www.stihl.com

## 24 General and Product-Specific Safety Instructions

### 24.1 Introduction

This section reproduces the general and product-specific safety instructions prescribed and pre-formulated in the product standard.

The safety information for avoiding electric shock given under "Electrical Safety" is not applicable to STIHL battery products, with the exception of point c).

#### WARNING

- **Read all safety warnings, instructions, illustrations and specifications provided with this lawn mower.** Failure to follow all instructions listed below may result in electric shock, fire and/or serious injury. **Save all warnings and instructions for future reference.**

### 24.2 Work Area Safety

- Keep work area clean and well lit.** Cluttered or dark areas invite accidents.
- Do not operate lawn mowers in explosive atmospheres, such as in the presence of flammable liquids, gases or dust.** Lawn mowers create sparks which may ignite the dust or fumes.
- Keep children and bystanders away while operating a lawn mower.** Distractions can cause you to lose control.

### 24.3 Electrical Safety

- Lawn mower plugs must match the outlet. Never modify the plug in any way. Do not use any adapter plugs with earthed (grounded) lawn mowers.** Unmodified plugs and matching outlets will reduce risk of electric shock.
- Avoid body contact with earthed or grounded surfaces, such as pipes, radiators, ranges and refrigerators.** There is an increased risk of electric shock if your body is earthed or grounded.
- Do not operate the lawn mower when it is raining or in wet conditions.** This may increase the risk of electric shock.
- Do not abuse the electric cable. Never use the electric cable for carrying, pulling or unplugging the lawn mower. Keep the electric cable away from heat, oil, sharp edges or**

**moving parts.** Damaged or entangled electric cables increase the risk of electric shock.

- e) **When operating a lawn mower outdoors, use an extension cable suitable for outdoor use.** Use of a cable suitable for outdoor use reduces the risk of electric shock.
- f) **If operating a lawn mower in a damp location is unavoidable, use a residual current device (RCD) protected supply.** Use of an RCD reduces the risk of electric shock.

## 24.4 Personal Safety

- a) **Stay alert, watch what you are doing and use common sense when operating a lawn mower. Do not use a lawn mower while you are tired or under the influence of drugs, alcohol or medication.** A moment of inattention while operating lawn mowers may result in serious personal injury.
- b) **Use personal protective equipment. Always wear eye protection.** Protective equipment such as a dust mask, non-skid safety shoes, hard hat or hearing protection used for appropriate conditions will reduce personal injuries.
- c) **Prevent unintentional starting. Ensure the switch is in the off-position before connecting to power source and/or battery pack, picking up or carrying the lawn mower.** Carrying lawn mowers with your finger on the switch or energising lawn mowers that have the switch on invites accidents.
- d) **Remove any adjusting key or wrench before turning the lawn mower on.** A wrench or a key left attached to a rotating part of the lawn mower may result in personal injury.
- e) **Do not overreach. Keep proper footing and balance at all times.** This enables better control of the lawn mower in unexpected situations.
- f) **Dress properly. Do not wear loose clothing or jewellery. Keep your hair and clothing away from moving parts.** Loose clothes, jewellery or long hair can be caught in moving parts.
- g) **If devices are provided for the connection of dust extraction and collection facilities, ensure these are connected and properly used.** Use of dust collection can reduce dust-related hazards.
- h) **Do not let familiarity gained from frequent use of lawn mowers allow you to become complacent and ignore lawn mower safety**

**principles.** A careless action can cause severe injury within a fraction of a second.

## 24.5 Lawn Mower Use and Care

- a) **Do not force the lawn mower. Use the correct lawn mower for your application.** The correct lawn mower will do the job better and safer at the rate for which it was designed.
- b) **Do not use the lawn mower if the switch does not turn it on and off.** Any lawn mower that cannot be controlled with the switch is dangerous and must be repaired.
- c) **Disconnect the plug from the power source and/or remove the battery pack, if detachable, from the lawn mower before making any adjustments, changing accessories or storing lawn mowers.** Such preventive safety measures reduce the risk of starting the lawn mower accidentally.
- d) **Store idle lawn mowers out of the reach of children and do not allow persons unfamiliar with the lawn mower or these instructions to operate the lawn mower.** Lawn mowers are dangerous in the hands of untrained users.
- e) **Maintain lawn mowers and accessories. Check for misalignment or binding of moving parts, breakage of parts and any other condition that may affect the lawn mower's operation. If damaged, have the lawn mower repaired before use.** Many accidents are caused by poorly maintained lawn mowers.
- f) **Keep cutting tools sharp and clean.** Properly maintained cutting tools with sharp cutting edges are less likely to bind and are easier to control.
- g) **Use the lawn mower, accessories and tool bits etc. in accordance with these instructions, taking into account the working conditions and the work to be performed.** Use of the lawn mower for operations different from those intended could result in a hazardous situation.
- h) **Keep handles and grasping surfaces dry, clean and free from oil and grease.** Slippery handles and grasping surfaces do not allow for safe handling and control of the lawn mower in unexpected situations.

## 24.6 Service

- a) **Have your lawn mower serviced by a qualified repair person using only identical replacement parts.** This will ensure that the safety of the lawn mower is maintained.

## 24.7 Safety Instructions for Electric Lawn Mowers

- a) **Do not use the lawn mower in bad weather conditions, especially when there is a risk of lightning.** This decreases the risk of being struck by lightning.
- b) **Thoroughly inspect the area for wildlife where the lawn mower is to be used.** Wildlife may be injured by the lawn mower during operation.
- c) **Thoroughly inspect the area where the lawn mower is to be used and remove all stones, sticks, wires, bones and other foreign objects.** Thrown objects can cause personal injury.
- d) **Before using the lawn mower, always visually inspect to see that the mowing blade and the mowing deck are not worn or damaged.** Worn or damaged parts increase the risk of injury.
- e) **Before use, check the power cable and any extension cables for signs of damage or ageing. Do not use the lawn mower if the cable is damaged or worn. If the power cable becomes damaged or worn during operation, switch the lawn mower off and do not touch the cable until you have disconnected the mains plug.** A damaged power or extension cable can cause electric shock, fire and/or serious injury.
- f) **Check the grass catcher frequently for wear or deterioration.** A worn or damaged grass catcher may increase the risk of personal injury.
- g) **Keep guards in place. Guards must be in working order and be properly mounted.** A guard that is loose, damaged, or is not functioning correctly may result in personal injury.
- h) **Keep all cooling air inlets clear of debris.** Blocked air inlets and debris may result in overheating or risk of fire.
- i) **While operating the lawn mower, always wear non-slip and protective footwear. Do not operate the lawn mower when barefoot or wearing open sandals.** This reduces the chance of injury to the feet from contact with the moving blade.
- j) **While operating the lawn mower, always wear long trousers.** Exposed skin increases the likelihood of injury from thrown objects.
- k) **Do not operate the lawn mower in wet grass. Walk, never run.** This reduces the risk of slipping and falling which may result in personal injury.
- l) **Do not operate the lawn mower on excessively steep slopes.** This reduces the risk of loss of control, slipping and falling which may result in personal injury.
- m) **When working on slopes, always be sure of your footing, always work across the face of slopes, never up or down and exercise extreme caution when changing direction.** This reduces the risk of loss of control, slipping and falling which may result in personal injury.
- n) **Use extreme caution when reversing or pulling the lawn mower towards you. Always be aware of your surroundings.** This reduces the risk of tripping during operation.
- o) **Keep the power cable away from the mowing blades.** A damaged power cable can cause electric shock, fire and/or serious injury.
- p) **Switch the mower off and disconnect the mains plug if the power cable is caught or damaged.** Caught or damaged cables increase the risk of electric shock.
- q) **Do not touch blades and other hazardous moving parts while they are still in motion.** This reduces the risk of injury from moving parts.
- r) **When clearing jammed material or cleaning the lawn mower, make sure all power switches are off and the mains plug is disconnected.** Unexpected operation of the lawn mower may result in serious personal injury.

## Table des matières

1	Préface.....	42
2	Informations concernant la présente Notice d'emploi.....	42
3	Vue d'ensemble.....	43
4	Prescriptions de sécurité.....	43
5	Préparation de la tondeuse.....	49
6	Assemblage de la tondeuse à gazon.....	49
7	Branchement électrique de la tondeuse... ..	51
8	Mise en marche et arrêt de la tondeuse à gazon.....	51
9	Contrôle de la tondeuse.....	51
10	Utilisation de la tondeuse.....	52
11	Après le travail.....	54
12	Transport.....	54
13	Rangement.....	54