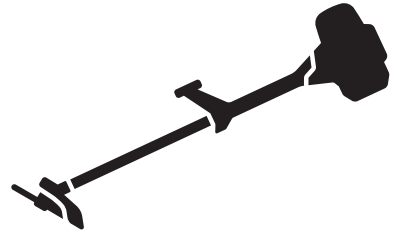




# Husqvarna®



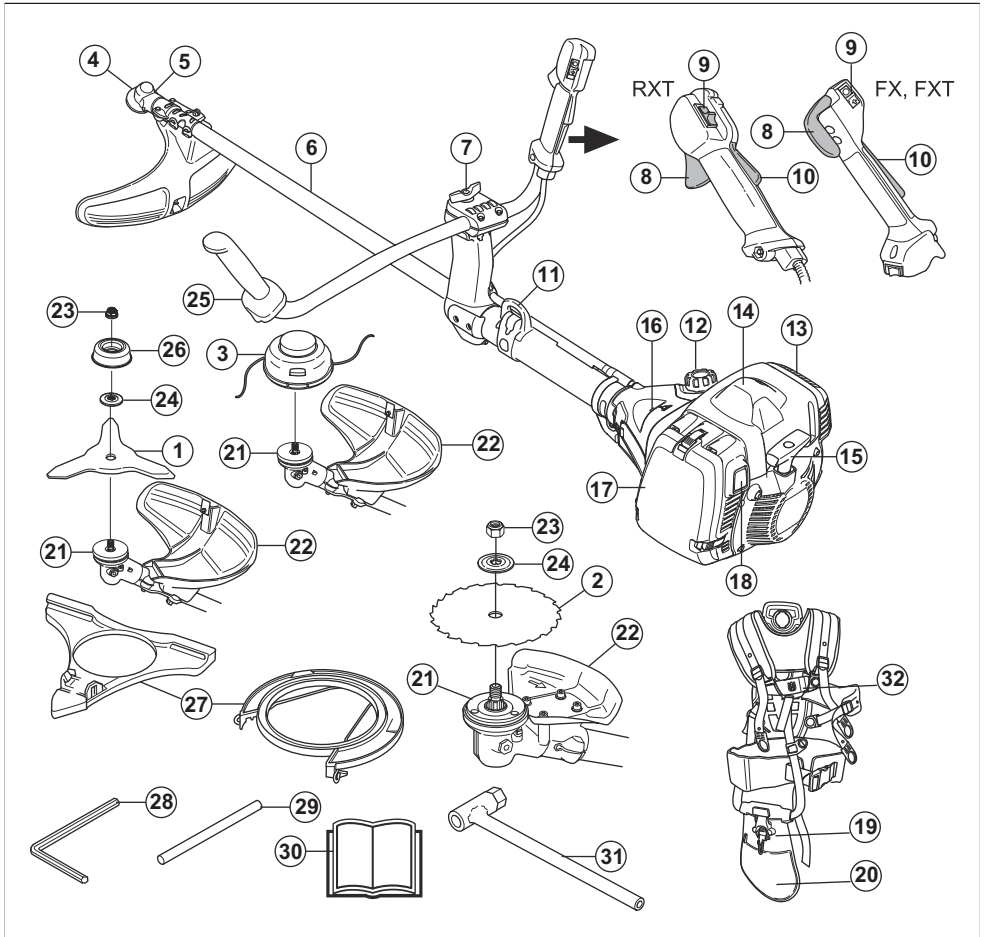
545RXT AutoTune® , 545FX AutoTune® ,  
545FXT AutoTune®

# Contents

Introduction.....	2	Transportation, storage and disposal.....	27
Safety.....	4	Technical data.....	28
Assembly.....	10	Accessories.....	29
Operation.....	14	Registered trademarks.....	30
Maintenance.....	21	Declaration of Conformity.....	31
Troubleshooting.....	27	Appendix .....	33

## Introduction

### Product overview



1. Grass blade

2. Saw blade

3. Trimmer head
4. Bevel gear
5. Grease fill cap, bevel gear
6. Shaft
7. Handle adjustment
8. Throttle trigger
9. Stop switch
10. Throttle trigger lockout
11. Suspension point
12. Fuel tank
13. Muffler
14. Spark plug cap and spark plug, below the cover
15. Starter rope handle
16. Air purge bulb
17. Air filter cover
18. Start button
19. Harness, quick-release mechanism
20. Harness, hip pad
21. Drive disc
22. Cutting attachment guard
23. Locknut
24. Support flange
25. Handlebar
26. Support cup
27. Transport guard
28. Hex key
29. Locking pin
30. Operator's manual
31. Socket wrench
32. Harness

## Product description

The 545RXT AT, 545FX AT and 545FXT AT are handheld engine units with interchangeable cutting attachments. The engine has the AutoTune function.

### AutoTune

The carburetor controls the speed of the engine through the throttle. Air and fuel is mixed in the carburetor. The AutoTune function adjusts the carburetor automatically to get the correct air and fuel mixture. AutoTune adapts the engine to local conditions, such as climate, altitude, gasoline and type of 2-stroke oil.

### Intended use

Use the product with a saw blade, a grass blade or a trimmer head to cut different types of vegetation. Do not use the product for other tasks than grass trimming, grass clearing and forestry clearing. Use a saw blade to cut fibrous types of wood. Use a grass blade or trimmer head to cut grass.

**Note:** National or local regulations can regulate the use. Comply to given regulations.

Only use the product with accessories that are approved by the manufacturer. Refer to *Accessories on page 29*.

## Symbols on the product



Stop.



**WARNING!** This product is dangerous. Injury or death can occur to the operator or bystanders if the product is not used carefully and correctly. To prevent injury to the operator or bystanders, read and obey all safety instructions in the operator's manual.



Please read the operator's manual carefully and make sure that you understand the instructions before use.



Use a protective helmet in locations where objects can fall on you. Use approved hearing protection. Use approved eye protection.



Use approved protective gloves.



Use heavy-duty slip-resistant boots.



The product can cause objects to eject, which can cause injury.



Maximum speed of the output shaft.



Keep a minimum distance of 15 m to persons and animals during operation of the product.



Risk of blade thrust if the cutting equipment touches an object that it does not immediately cut. The product can cut off body parts. Keep a minimum of 15 m distance to persons and animals during operation of the product.



Only use a flexible cutting wire. Do not use metal cutting elements. Apply this for grass guard accessory.



Air purge bulb.



Start button.



Fill fuel.



Air intake, summer mode.



Air intake, winter mode.



Noise emission to the environment label as per EU (also including New South Wales legislation) and UK directives and regulations. The guaranteed sound power level of the product is specified in *Technical data on page 28* and on the label.



The product agrees with the applicable EC directives.

This product conforms to the applicable UK regulations.

The rating plate shows the serial number. **yyyy** is the production year, **ww** is the production week.

yyyywwxxxx

**Note:** Other symbols/decals on the product refer to certification requirements for other commercial areas.

## Euro V Emissions



**WARNING:** Tampering with the engine voids the EU type-approval of this product.

## Product liability

As referred to in the product liability laws, we are not liable for damages that our product causes if:

- the product is incorrectly repaired.
- the product is repaired with parts that are not from the manufacturer or not approved by the manufacturer.
- the product has an accessory that is not from the manufacturer or not approved by the manufacturer.
- the product is not repaired at an approved service center or by an approved authority.

# Safety

## Safety definitions

Warnings, cautions and notes are used to point out specially important parts of the manual.



**WARNING:** Used if there is a risk of injury or death for the operator or bystanders if the instructions in the manual are not obeyed.



**CAUTION:** Used if there is a risk of damage to the product, other materials or the adjacent area if the instructions in the manual are not obeyed.

**Note:** Used to give more information that is necessary in a given situation.

## General safety instructions



**WARNING:** Read the warning instructions that follow before you use the product.

- This product produces an electromagnetic field during operation. This field may under some circumstances interfere with active or passive medical implants. To reduce the risk of serious or fatal injury we recommend persons with medical implants to consult their physician and the medical implant manufacturer before operating this product.
- Do not use the product if you are tired, ill, or under the influence of alcohol, drugs or medicine. This has a negative effect on your vision, alertness, coordination and judgment.
- Do not operate the product in bad weather, such as dense fog, heavy rain, strong wind and intense

cold. To operate the product in bad weather can make you tired and add risks, such as icy ground and unpredictable felling direction.

- Always be careful and use your common sense. If you feel uncertain about a work situation or the operating procedures after you read the operator's manual, speak to a servicing dealer before you continue.
- Remove the spark plug cap if you let the product out of view.
- A used muffler/spark arrester and spark arrester mounting face may contain deposits of combustion particles that may be carcinogenic. Avoid being exposed to these compounds when handling the muffler and/or spark arrester. Prior to any handling of the muffler and/or the spark arrester, refer to *To do a check of the muffler on page 8*.

## Safety instructions for assembly



**WARNING:** Read the warning instructions that follow before you use the product.

- Use approved protective gloves when you assemble the product and cutting attachment.
- Remove the spark plug cap from the spark plug before you assemble the product.
- Make sure that the correct handlebar and cutting attachment guard are assembled before you operate the product.
- A damaged or incorrect cutting attachment guard can cause injury. Do not use a cutting attachment without an approved cutting attachment guard.
- Attach the clutch cover and shaft correctly before you start the product.
- The drive disc and support flange must engage correctly in the center hole of the cutting attachment. A cutting attachment that is attached incorrectly can cause injury or death.
- Attach the harness to the product to prevent injury to the operator or others.

## Safety instructions for operation



**WARNING:** Read the warning instructions that follow before you use the product.

- Learn and understand the difference between forestry clearing, grass clearing and grass trimming before you use the product.
- Use personal protective equipment, refer to *Personal protective equipment on page 6*.
- Long-term exposure to noise can result in permanent hearing loss. Always use approved hearing protection.

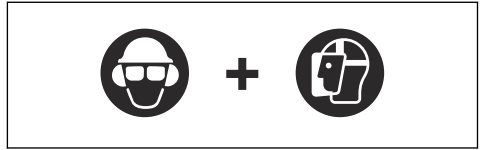
- Listen for warning signals and loud voices when you use hearing protection. Always remove your hearing protection when the engine stops.
- Never use the product if it is changed or damaged.
- Make sure that the spark plug cap and ignition lead are not damaged to prevent the risk of electrical shock.
- Look around the work area to make sure that no persons, animals or objects have a negative effect on the safety of the operation of the product.
- Look around the work area to make sure that no persons or animals touch the cutting attachment or are hit by objects that are ejected from the cutting attachment.
- Do not use the product in a situation or location where you can not get aid if an accident occurs.
- Do not use the product without an approved cutting attachment guard.
- Make sure that persons or animals keep a distance of a minimum of 15 m/50 ft during work. Always look behind you before you turn around with the product. Stop the product immediately if a person or animal enters the 15 m/50 ft safety zone. If more than 1 operator does work in the same area, keep a safety distance of a minimum of 2 times the tree height and a minimum of 15 m/50 ft.
- Examine the work area. Avoid loose objects, such as stones, broken glass, nails, steel wire and string, that can eject or wind around the cutting attachment.
- Make sure that you can move safely and have a safe stance. Examine the area around you for obstacles such as roots, rocks, branch and ditches. Be careful during work on slopes.



- Do not overreach. Keep a stable position of the feet and a good balance at all times.
- Before you start the product, put it on a flat surface, at a minimum of 3 m/10 ft from the fuel source and from where you fill fuel. Make sure that there are no objects near or touching the cutting attachment.
- If the cutting attachment rotates at idle speed, let a service agent adjust it. Do not use the product until it is adjusted or repaired.
- Look out for thrown objects. Always use approved eye protection and keep away from the cutting attachment guard. Stones and other small objects

can eject into your eyes and cause blindness or other injuries.

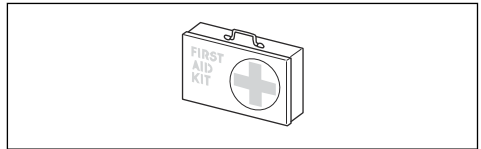
- Do not put the product down with the engine on unless you have it in clear view.
- Do not remove the cut material, or let other persons remove cut material, while the engine is on or the cutting equipment rotates, as this can result in serious injury.
- Always stop the engine and make sure that the cutting equipment does not rotate before you remove material that is wound around the blade shaft or caught between the cutting attachment guard and the cutting attachment.
- Be careful when you remove material from around the cutting equipment. The bevel gear gets hot during operation and can cause burn injuries.
- The exhaust fumes from the engine are hot and can contain sparks. Risk of fire. Be careful around dry and flammable material.
- Never use the product indoors or in spaces lacking proper ventilation. Exhaust fumes contain carbon monoxide, an odourless, poisonous and highly dangerous gas.
- Stop the engine before you move to a new work area. Always attach the transport guard before you move the equipment.
- Overexposure to vibration can lead to circulatory damage or nerve damage in persons who have poor circulation. Speak to your physician if you experience symptoms of overexposure to vibration. Such symptoms include numbness, loss of feeling, tingling, pricking, pain, loss of strength, changes in skin colour or condition. These symptoms usually show in the fingers, hands or wrists. The risk increases at low temperatures.



- Use gloves when it is necessary, for example when you attach, examine or clean the cutting equipment.
- Use protective boots with steel toe-cap and non-slip soles.
- Use clothing made of a strong fabric. Always use heavy, long pants and long sleeves. Do not use loose clothing that can catch on twigs and branches. Do not use jewelry, short pants or sandals. Do not go with bare feet. Put your hair up safely above shoulder level.



- Keep first aid equipment near.



## Safety devices on the product

For information about where to find the safety devices, see *Product overview on page 2*.



**WARNING:** Read the warning instructions that follow before you use the product.

- Do not use a product with damaged safety devices. Do a check of and do maintenance on the safety devices regularly. If the safety devices are damaged, speak to your Husqvarna service agent.
- Do not make changes to safety devices. Do not use the product if protective covers, safety switches or other protective devices are not attached or are damaged.
- For all service and repair work on the product, especially for the safety devices, special training is necessary. If the safety devices fail the checks given in this operator's manual, you must let a service agent help you. We guarantee that professional repairs and service is available. If your dealer is not a service agent, speak to them for information about the nearest service agent.
- Do not use a cutting attachment without an approved and correctly attached cutting attachment guard. See *To assemble the cutting equipment on page 11*.

## Personal protective equipment



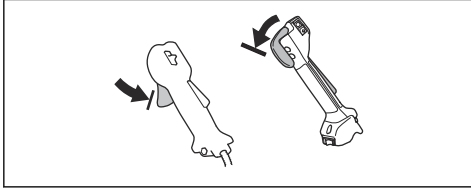
**WARNING:** Read the warning instructions that follow before you use the product.

- Always use approved personal protective equipment when you use the product. Personal protective equipment cannot fully prevent injury but it decreases the degree of injury if an accident does occur. Let your dealer help you select the correct equipment.
- Use a helmet if the trees in the work area have a height of more than 2 m/6.5 ft.
- Use approved hearing protection.
- Always use approved protective goggles that comply with ANSI Z87.1 standard in the USA or EN 166 in EU countries. Use visor for face protection. Visor is not enough to protect the eyes.

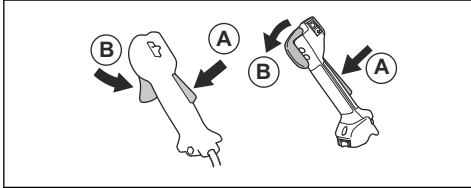
### To do a check of the throttle trigger lockout

The throttle trigger lockout locks the throttle trigger at the idle position.

1. Press the throttle trigger (B) and make sure that it is locked.

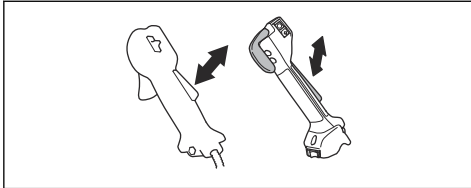


2. Press the throttle trigger lockout (A). Make sure that the throttle trigger (B) is released.

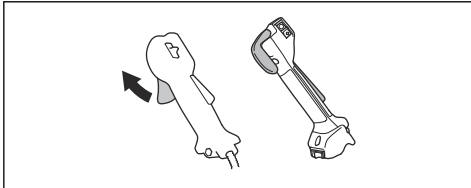


3. Release the handle and make sure that the throttle trigger lockout (A) and the throttle trigger (B) go back to their initial positions.

4. Press the throttle trigger lockout (A) and make sure that it goes back to its initial position when you release it.

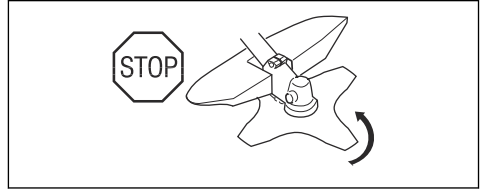


5. Press the throttle trigger (B) and make sure that it goes back to its initial position when you release it.



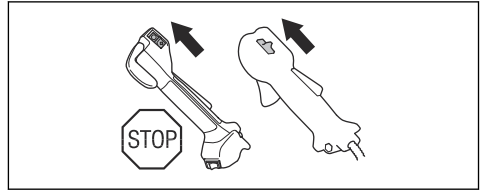
6. Start the engine and apply full throttle.

7. Release the throttle trigger and make sure that the cutting attachment stops.



### To do a check of the stop switch

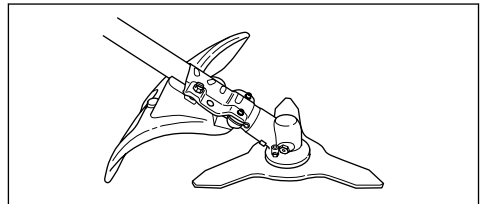
1. Start the engine.
2. Move the stop switch to the stop position and make sure that the engine stops.



### To do a check of the cutting attachment guard

The cutting attachment guard stops objects that ejects in the direction of the operator. It also prevents injuries that occur if you touch the cutting attachment.

1. Stop the engine.
2. Do a visual check for damages, for example cracks.



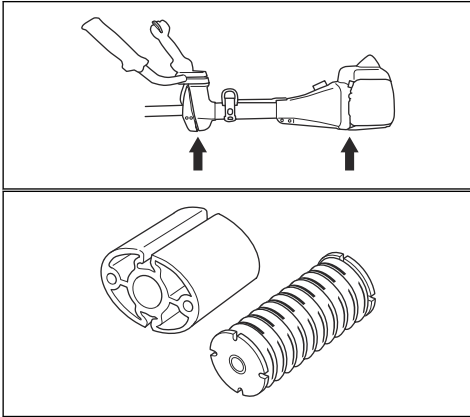
3. Replace the cutting attachment guard if it is damaged.

### To do a check of the vibration damping system

The vibration damping system decreases vibration in the handles to a minimum which makes the operation easier.

1. Stop the engine.
2. Do a visual check for deformation and damage for example, cracks.

3. Make sure you attach the elements of the vibration damping system are correctly.



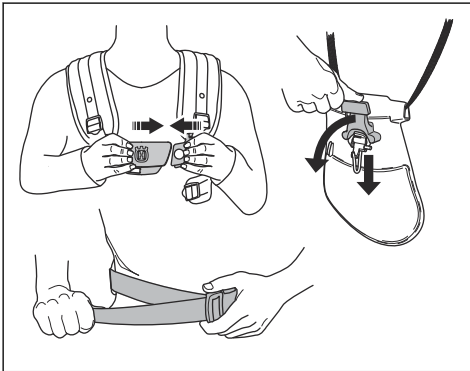
#### To do a check of the quick-release mechanism



**WARNING:** Do not use a harness with a damaged quick-release mechanism.

The quick-release mechanism lets the operator remove the product quickly from the harness if there is an emergency.

1. Stop the engine.
2. Do a visual check for damage for example, cracks.
3. Release and attach the quick-release mechanism to make sure that it operates correctly.



#### To do a check of the muffler



**WARNING:** Do not use a product with a damaged muffler.



**WARNING:** The mufflers become very hot during and after operation, also at idle speed. Use protective gloves to prevent burn injuries.

The muffler keeps noise levels to a minimum and sends exhaust fumes away from the operator.

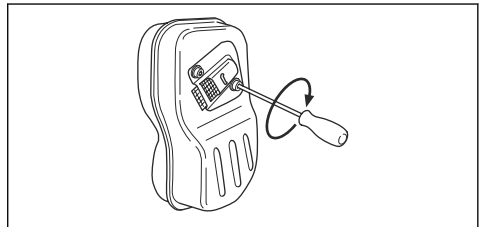
1. Stop the engine.
2. Do a visual check for damage and deformation.



**WARNING:** A used muffler/spark arrester and spark arrester mounting face may contain deposits of combustion particles on the surfaces that may be carcinogenic. To avoid skin contact and inhalation of such particles when cleaning and/or servicing the spark arrester, make sure you always:

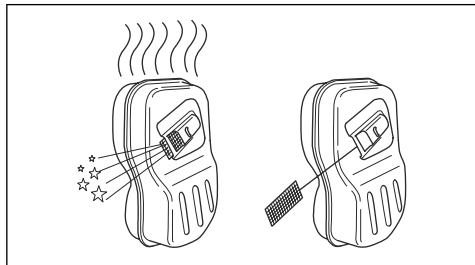
- wear gloves;
- clean and/or service in a well ventilated area;
- do not use pressurized air to clean the spark arrester screen;
- use a steel brush and brush away from your body when cleaning the spark arrester.

3. Make sure that the muffler is correctly attached to the product.





4. If the muffler on your product has a spark arrester screen, do a visual check.



- Replace the spark arrester screen if it is damaged.
- Clean the spark arrester screen if it is blocked. See *To clean the muffler on page 22* for more information.

### Cutting attachment



**WARNING:** Read the warning instructions that follow before you use the product.

- Do the regular maintenance. Let an approved service center regularly examine the cutting attachment to do adjustments or repairs.
  - The performance of the cutting attachment increases.
  - The life of the cutting attachment increases.
  - The risk of accidents decreases.
- Only use an approved cutting attachment guard. Refer to *Accessories on page 29*.
- Do not use a damaged cutting attachment.

### Grass trimmer head

- Make sure that you wind the grass trimmer line tightly and equally around the drum to decrease the vibration.
- Use only the approved grass trimmer heads and grass trimmer lines. Refer to *Accessories on page 29*.
- Use a correct length of the grass trimmer line. A long grass trimmer line uses more engine power than a short grass trimmer line.
- Make sure that the cutter on the cutting attachment guard is not damaged.
- Soak the grass trimmer line in water for 2 days before you attach the grass trimmer line to the product. This increases the life of the grass trimmer line.
- Refer to the instructions for the cutting attachment to use the correct procedure to load the cord and the correct cord diameter.

### Saw blade and grass blade

- Use correctly sharpened blades. An incorrectly sharpened or damaged blade increases the risk of injury.
- Use correctly set blades. Correct blade set is 1 mm. An incorrectly set blade increases the risk of injury and damage.
- To sharpen and set the blade correctly, refer to the instructions that come with the blade.

### Fuel safety



**WARNING:** Read the warning instructions that follow before you use the product.

- Do not mix the fuel indoor or near a heat source.
- Do not start the product if there is fuel or engine oil on the product. Remove the unwanted fuel/oil and let the product dry. Remove unwanted fuel from the product.
- If you spill fuel on your clothing, change clothing immediately.
- Do not get fuel on your body, it can cause injury. If you get fuel on your body, use a soap and water to remove the fuel.
- Do not start the engine if you spill oil or fuel on the product or on your body.
- Do not start the product if the engine has a leak. Examine the engine for leaks regularly.
- Be careful with fuel. Fuel is flammable and the fumes are explosive and can cause injuries or death.
- Do not breathe in the fuel fumes, it can cause injury. Make sure that there is sufficient airflow.
- Do not smoke near the fuel or the engine.
- Do not put warm objects near the fuel or the engine.
- Do not add the fuel when the engine is on.
- Make sure that the engine is cool before you refuel.
- Before you refuel, open the fuel tank cap slowly and release the pressure carefully.
- Make sure there are sufficient airflow when refueling and mixing fuel (petrol and two-stroke oil) or draining the fuel tank.
- Fuel and fuel vapor are highly flammable and can cause serious injury when inhaled or allowed to come into contact with the skin. For this reason, observe caution when handling fuel and make sure there is sufficient airflow.
- Tighten the fuel tank cap carefully or a fire can occur.
- Move the product at a minimum of 3 m (10 ft) from the position where you filled the tank before a start.
- Do not put too much fuel in the fuel tank.
- Make sure that a leak cannot occur when you move the product or fuel container.
- Do not put the product or a fuel container where there is an open flame, spark or pilot light. Make

sure that the storage area does not contain an open flame.

- Only use approved containers when you move the fuel or put the fuel into storage.
- Empty the fuel tank before long-term storage. Obey the local law on where to dispose fuel.
- Clean the product before long-term storage.
- Remove the spark plug cap before you put the product into storage to make sure that the engine does not start accidentally.

- The exhaust fumes from the engine contain carbon monoxide, an odourless, poisonous and very dangerous gas that can cause death. Do not run the product indoors or in closed spaces.
- The exhaust fumes from the engine are hot and can contain sparks. Do not run the product indoors or near flammable material.
- Accessories and changes to the product that are not approved by the manufacturer, can cause serious injury or death. Do not change the product. Always use original accessories.
- If the maintenance is not done correctly and regularly, there is an increased risk of injury and damage to the product.
- Only do the maintenance as this operator's manual recommends. Let an approved Husqvarna service agent do all other servicing.
- Let an approved Husqvarna service agent do servicing on the product regularly.
- Replace damaged, worn or broken parts.

## Safety instructions for maintenance



**WARNING:** Read the warning instructions that follow before you use the product.

- Stop the engine, make sure that the cutting attachment stops. Remove the cylinder cover and disconnect the spark plug cap before you do the maintenance.

## Assembly

### Introduction



**WARNING:** Before you assemble the product, you must read and understand the safety chapter.

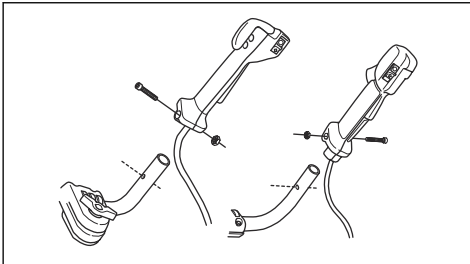


**WARNING:** Remove the spark plug cable from the spark plug before you assemble the product.

### To attach the throttle handle

**Note:** On some models, the throttle handle is attached at the factory.

1. Remove the nut and screw at the bottom of the throttle handle.
2. Put the throttle handle onto the right side of the handlebar.

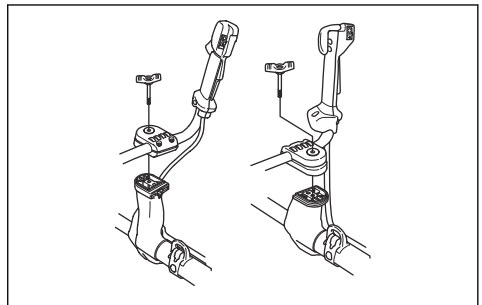


3. Align the screw hole in the throttle handle with the hole in the handlebar.

4. Put the screw into the hole at the bottom of the throttle handle, through the handlebar.
5. Put back and tighten the nut.

### To assemble the handlebar

1. Remove the knob and attach the handlebar as given in the illustration.



2. Tighten the knob lightly.
3. Put on the harness and hang the product from the suspension point.

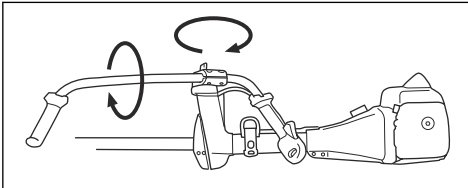
- Adjust the handle to put the product in a comfortable work position.



- Tighten the knob fully.

### To set the handlebar in transport position

- Loosen the knob.
- Turn the handlebar clockwise until the throttle handle touches the battery.
- Turn the handlebar around the shaft.



- Tighten the knob.

### To assemble the cutting equipment

The cutting equipment includes a cutting attachment and a cutting attachment guard.



**WARNING:** Use protective gloves.



**WARNING:** Always use the cutting attachment guard that is recommended for the cutting attachment. See *Accessories* on page 29.

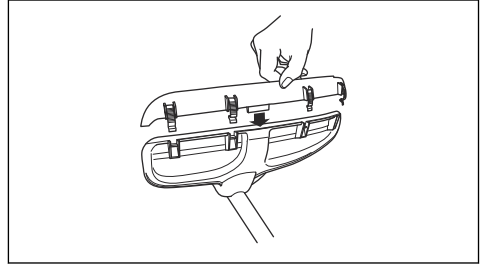


**WARNING:** An incorrectly attached cutting attachment can result in injury or death.

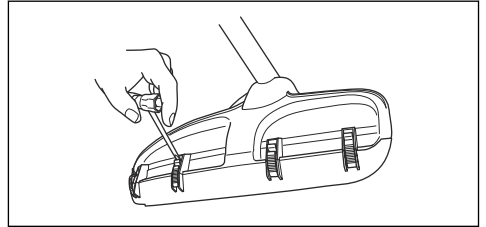
### To attach and remove the guard extension

The guard extension is used on the combination guard. Attach the guard extension when you use a trimmer head or plastic blades. Remove the extension guard when you use a grass blade.

- Put the guide on the guard extension into the slot on the combination guard. Click the 4 locking hooks into position.

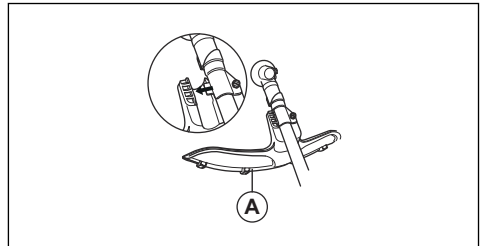


- Release the locking hooks with the spark plug wrench to remove the guard extension.



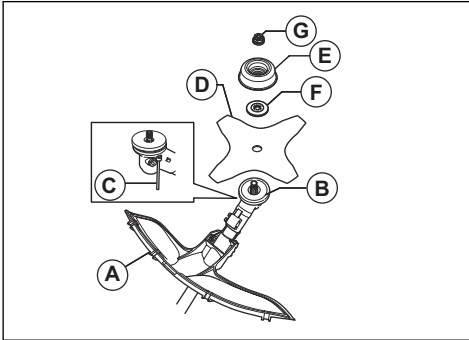
### To attach the grass blade and the grass blade guard/combination guard

- Put the blade guard/combination guard (A) onto the shaft and tighten the bolt to attach it.

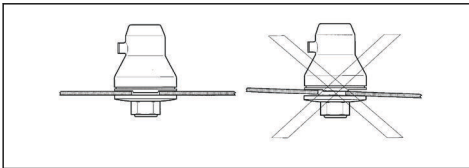


- Make sure that the guard extension is removed.
- Turn the output shaft to align one of the holes in the drive disc (B) with the related hole in the gear housing.
- Put the locking pin (C) in the hole to lock the shaft.

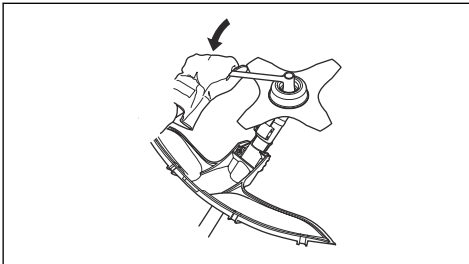
- Put the grass blade (D), the support flange (F) and the support cup (E) on the output shaft.



- Make sure that the drive disc and support flange engages correctly in the centre hole of the grass blade.

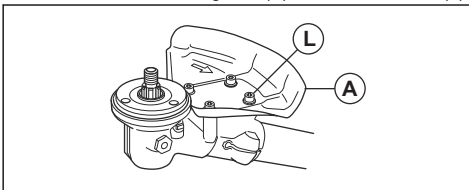


- Attach the nut (G).
- Tighten the nut with the socket wrench. Hold the shaft of the socket wrench near the blade guard. Tighten in the opposite direction to how the cutting attachment rotates. Tighten it to a torque of 35-50 Nm.



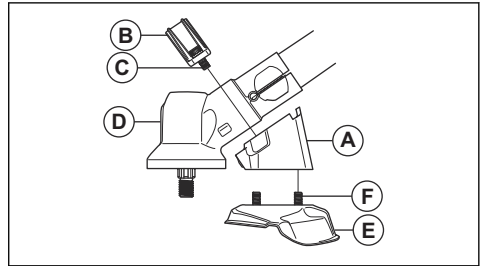
### To attach the saw blade guard on 545FX AT and 545FXT AT

- Attach the saw blade guard (A) with the 4 screws (L).



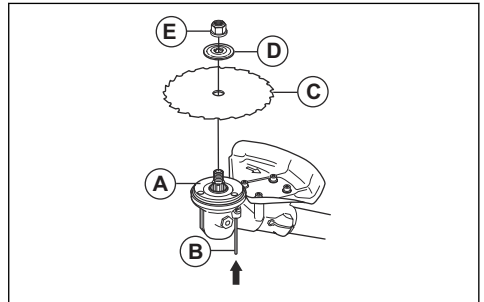
### To attach the saw blade guard

- Attach the holder (A) and bracket (B) with 2 bolts (C) on the gear housing (D).
- Attach the saw blade guard (E) with 4 bolts (F) in the holder (A).

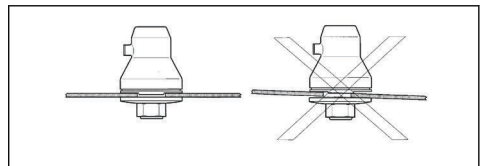


### To attach the saw blade

- Put the drive disc (A) on the output shaft.
- Turn the output shaft to align 1 of the holes in the drive disc with the related hole in the gear housing.
- Put the locking pin (B) in the hole to lock the shaft.
- Put the saw blade (C) and the support flange (D) on the output shaft.

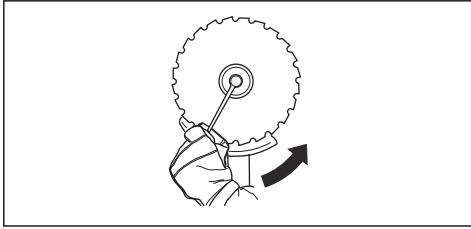


- Make sure that the drive disc and support flange engages correctly in the center hole of the grass blade.



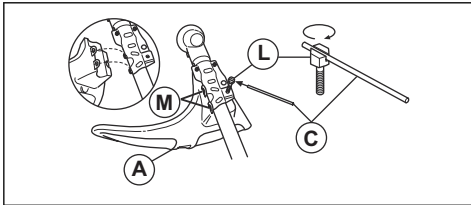
- Attach the locknut (E).

- Tighten the locknut with the socket wrench. Hold the shaft of the socket wrench near the blade guard. Tighten in the opposite direction to how the cutting attachment rotates. Tighten it to a torque of 35-50 Nm.



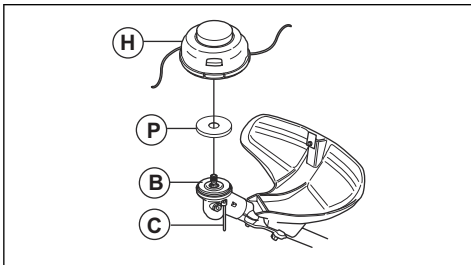
### To attach the trimmer guard or combination guard for trimmer head and plastic blades

- Hang the trimmer guard/combination guard (A) onto the two hooks on the plate holder (M).
- Bend the guard around the shaft and attach it with the bolt (L) on the opposite side of the shaft.
- Put the locking pin (C) in the groove on the bolt head and tighten the bolt fully.



### To attach a trimmer head or plastic blade

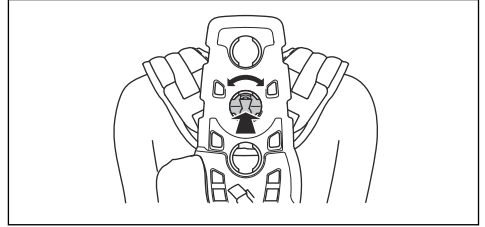
- Put the drive disc (B) on the output shaft.
- Align the metal cup (P) with the center of the blade guide on the drive disc.
- Turn the output shaft to align one of the holes in the drive disc with the related hole in the gear housing.
- Put the locking pin (C) in the hole to lock the shaft.
- Turn the trimmer head/plastic blades (H) counterclockwise to attach.



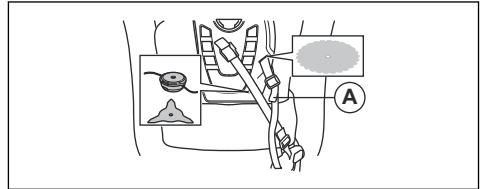
### To adjust the Balance XT harness

See *Product overview on page 2* for an overview of the harness.

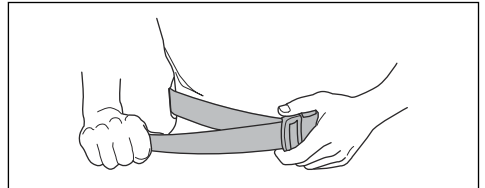
- Stop the engine.
- Push the quick-release mechanism down to release the product from the harness.
- To adjust the harness to the operator's height:
  - Press the spring loaded lock.
  - Turn the shoulder strap attachment.
  - Move the shoulder strap attachment to an applicable hole in the back plate.



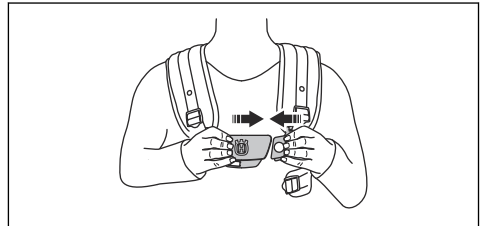
- Attach the strap (A) in correct position for grass clearing or forestry clearing.



- Tighten the hip strap tightly. Make sure that the hip strap aligns with the hip bone.

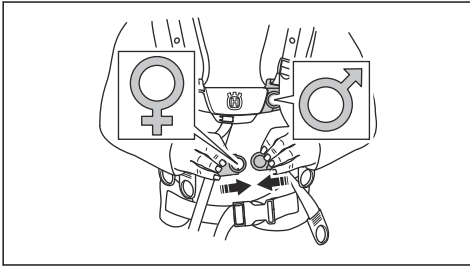


- Press the 2 parts of the breastplate together as shown.

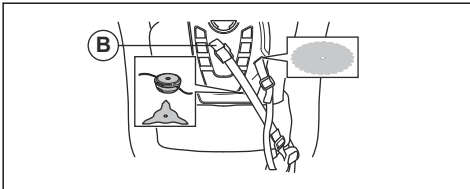


- Attach the side belt to the breastplate.

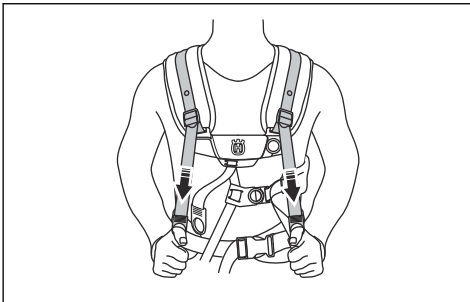
8. To decrease the pressure on the rib cage and shoulders, connect the side strap with the strap to the hip pad. Recommended for women.



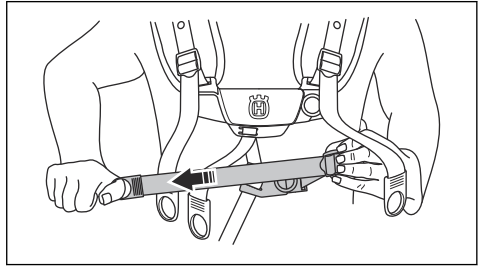
9. Tighten the elastic strap (B) to move more load from the shoulder strap to the hip strap.



10. Adjust the shoulder strap to make the product weigh equally on your shoulders.



11. Adjust the side straps around the rib cage until the breastplate is aligned with the center of your chest.



12. Adjust the height of the suspension point, see *Product overview on page 2*. For forestry clearing, the correct height of the suspension is approximately 10 cm below your hip bone.

## Operation

### Introduction



**WARNING:** Before you operate the product, you must read and understand the safety chapter.

### Husqvarna Connect

Husqvarna Connect is a free app for your mobile device. The Husqvarna Connect app gives extended functions for your Husqvarna product.

- Extended product information.
- Information about, and help with, product parts and servicing.

### To start to use Husqvarna Connect

1. Download the Husqvarna Connect app on your mobile device.
2. Register in the Husqvarna Connect app.
3. Follow the instruction steps in the Husqvarna Connect app to connect and register the product.

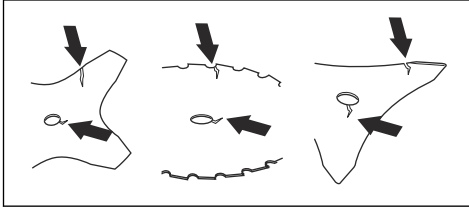
**Note:** Husqvarna Connect app is not available for download in all markets. Speak to your servicing dealer for more information.

### Before you operate the product

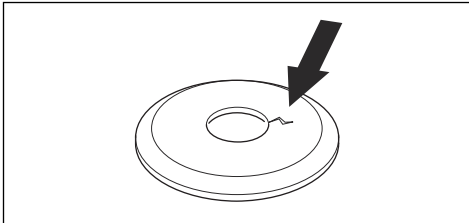
- Examine the work area to make sure that you know the type of terrain, the slope of the ground and if

there are obstacles such as stones, branches and ditches.

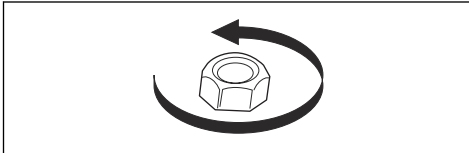
- Do an overhaul inspection of the product.
- Do the safety inspections, maintenance and servicing that are given in this manual.
- Make sure that all covers, guards, handles and the cutting equipment are correctly attached and not damaged.
- Make sure that there are no cracks at the bottom of the saw blade or grass blade teeth or by the center hole of the blade. Replace the blade if it is damaged.



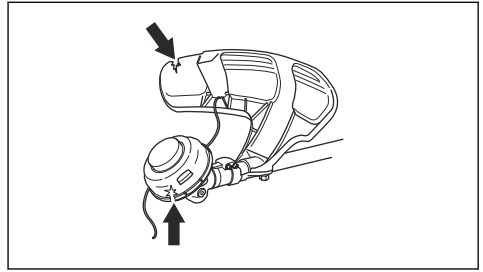
- Examine the support flange for cracks. Replace the support flange if it is damaged.



- Make sure that the locknut can not be removed by hand. If you can remove it by hand, it does not lock the cutting attachment sufficiently and you must replace it.



- Examine the blade guard for damages or cracks. Replace the blade guard if it has been hit or if it has cracks.
- Examine the trimmer head and cutting attachment guard for damages or cracks. Replace the trimmer head and cutting attachment guard if they have been hit or if they have cracks.



## Fuel

### To use fuel



**CAUTION:** This product has a two-stroke engine. Use a mixture of gasoline and two-stroke engine oil. Make sure to use the correct quantity of oil in the mixture. Incorrect ratio of gasoline and oil can cause damage to the engine.

### Husqvarna alkylate fuel



**CAUTION:** Do not use gasoline with an octane number less than 90 RON (87 AKI). This can cause damage to the product.



**CAUTION:** Do not use gasoline with more than 10% ethanol concentration (E10). This can cause damage to the product.



**CAUTION:** Do not use leaded gasoline. This can cause damage to the product.

We recommend Husqvarna alkylate fuel for best performance. This fuel gives less dangerous exhaust fumes compared to regular fuel. It keeps the engine clean and increases the engine life. Husqvarna alkylate fuel is not available in all commercial areas.

- Always use new unleaded gasoline with a minimum octane number of 90 RON (87 AKI) and with less than 10% ethanol concentration (E10).
- Use gasoline with a higher octane number if you frequently use the product at continuously high engine speed.
- Always use a good quality unleaded gasoline/oil mixture.

### Two-stroke engine oil

- Use Husqvarna two-stroke engine oil, which is specially made for our two-stroke engines. Mixture 1:50 (2%).

- If Husqvarna two-stroke engine oil is not available, use a different high quality two-stroke engine oil. Use only an air cooled engine oil.
- Do not use two-stroke engine oil made for water-cooled outboard engines.
- Do not use oil made for four-stroke engines.

Gasoline, l	Two-stroke engine oil, l
	<b>2% (1:50)</b>
5	0,10
10	0,20
15	0,30
20	0,40

### To make the fuel mixture

**Note:** Always use a clean fuel container when you mix the fuel.

**Note:** Do not make more than 30 days quantity of fuel mixture.

1. Add half of the gasoline quantity.
2. Add the full quantity of oil.
3. Shake the fuel mixture to mix the contents.
4. Add the remaining gasoline quantity.
5. Shake the fuel mixture to mix the contents.
6. Fill the fuel tank.

### To add fuel

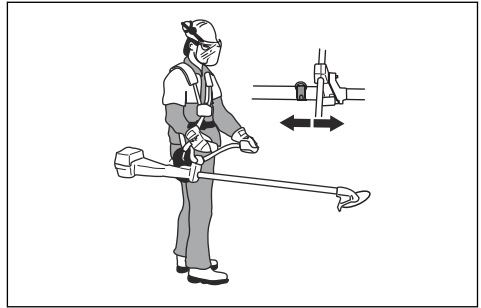
- Always use a fuel container with an antispill valve.
- If there is some fuel on the container, remove the unwanted fuel and let the container dry.
- Make sure that the area near the fuel tank cap is clean.
- Shake the fuel container before you add the fuel mixture to the fuel tank.

### Work position

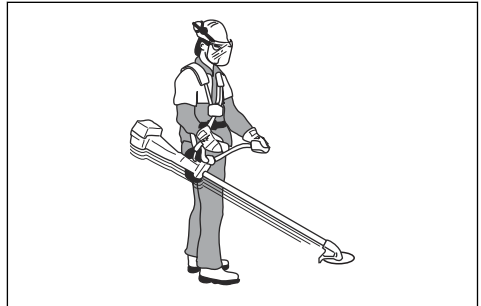
- Hold the product with 2 hands.
- Hold the product on the right side of your body.
- Keep the cutting attachment below waist level.
- Always keep the product attached to the harness.
- Keep body parts away from the hot surfaces.
- Keep body parts away from the cutting attachment.

### Correct balance of the product

For forestry clearing, the product is correctly balanced when it freely hangs horizontally from the suspension point. With correct balance, the risk of hitting stones if you release the handlebar is decreased.



For grass clearing, the product is correctly balanced when the blade is at cutting height near the ground.

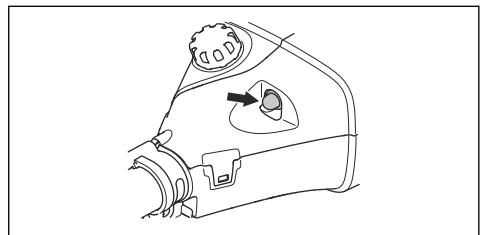


### To start the engine

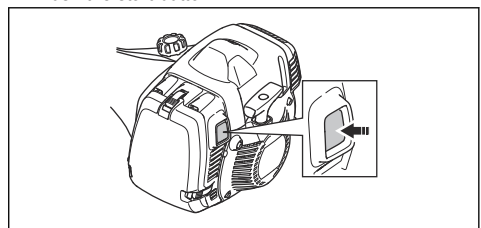


**WARNING:** Keep the safety distance of 15 m when the engine starts. There is a risk that the cutting attachment starts to rotate.

1. Push the air purge bulb until the bulb starts to fill with fuel.

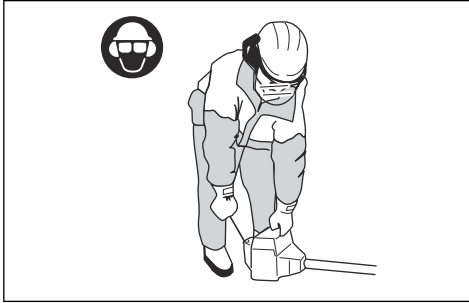


2. Push the start button.





3. Hold the body of the product on the ground with your left hand. Do not step on the product.



4. Pull the starter rope handle slowly until you feel some resistance, then pull the starter rope handle with force.



**WARNING:** Do not wind the starter rope around your hand.

5. Continue to pull the starter rope handle until the engine starts.

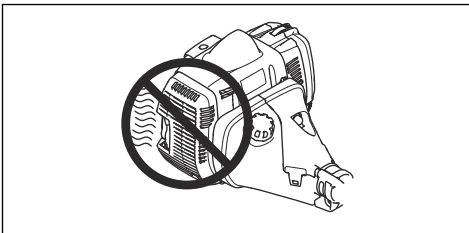


**CAUTION:** Do not pull the starter rope until it stops. Do not let go of the starter rope when it is fully extended. Release the starter rope slowly. Failure to obey these instructions can cause damage to the engine.

6. When the engine starts, press the throttle trigger gradually to increase the engine speed.
7. Make sure that the engine runs smoothly.

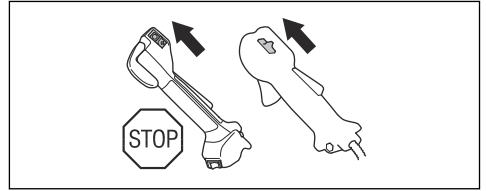


**WARNING:** Keep body parts away from the muffler. Risk of burn injuries.



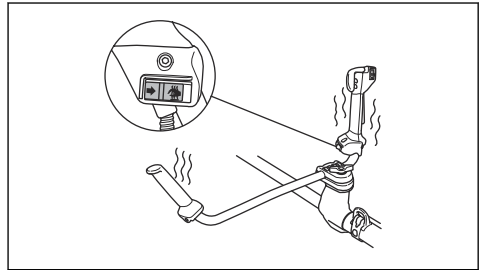
## To stop the engine

- Move the stop switch to the stop position.



## Heated handles

545FXT AT has heating elements in the handles. There is an ON/OFF switch on the throttle handle. The heating elements automatically keep a temperature of 70° when the heat is on.

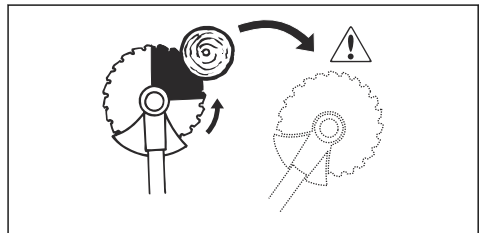


## Blade thrust

A blade thrust is when the product moves to the side quickly and with force. A blade thrust occurs when the grass blade or saw blade hits or catches on an object that cannot be cut. A blade thrust can eject the product or operator in all directions. There is a risk of injury to the operator and bystanders.

The risk increases in areas where it is not easy to see the material that is cut.

Do not cut with the area of the blade that is shown in black. The speed and movement of the blade can cause blade thrust. The risk increases with the thickness of the branch that is cut.



## General work instructions

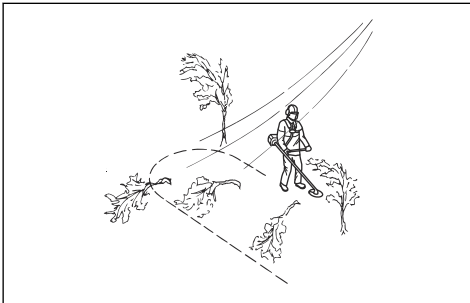


**WARNING:** Be careful when you cut a tree that is in tension. It can spring back to its normal position before or after the cut and hit you or the product, and cause injury.

- Clear an open space at one end of the work area, and start the work from there.
- Move in a regular pattern across the work area.



- Move the product fully to the left and right, to clear a width of 4–5 m on each turn.
- Clear a length of 75 m before you turn and go back. Move the fuel can along with you as you continue.
- Move in a direction where you do not go across ditches and obstacles more than necessary.
- Move in a direction where the wind makes the cut vegetation fall in the cleared area.



- Move along slopes, not up and down.

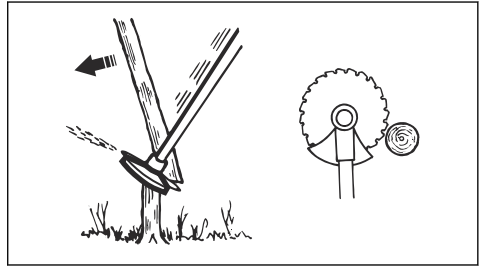
## Forestry clearing with a saw blade

### To fell a tree to the left

To fell to the left, push the bottom of the tree to the right.

1. Apply full throttle.
2. Put the saw blade against the tree as given in the picture.

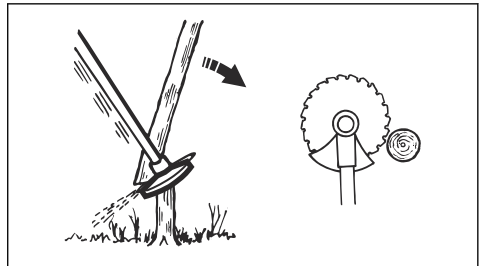
3. Tilt the saw blade and push it with force diagonally down to the right. At the same time, push the tree with the blade guard.



### To fell a tree to the right

To fell to the right, push the bottom of the tree to the left.

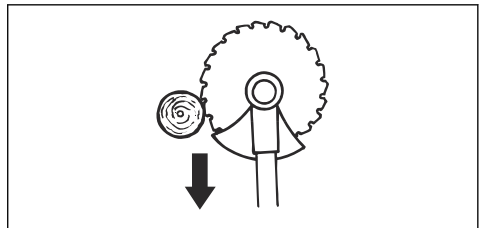
1. Apply full throttle.
2. Put the saw blade against the tree as given in the picture.
3. Tilt the saw blade and push it with force diagonally up and to the right. At the same time, push the tree with the blade guard.



### To fell a tree forward

To fell forward, push the bottom of the tree rearward.

1. Apply full throttle.
2. Put the saw blade against the tree as given in the picture.
3. Pull the saw blade forward with a fast movement.

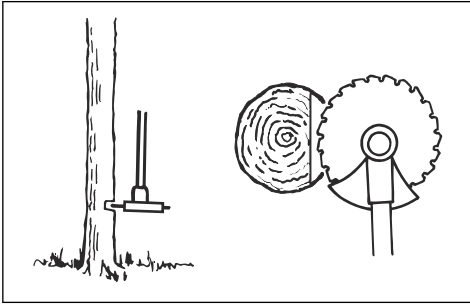


### To fell large trees

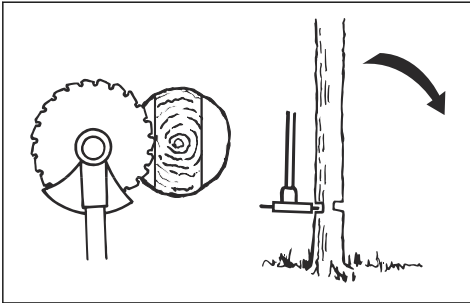
Large trees must be cut from 2 sides.

1. Examine in which direction the tree will fall.
2. Apply full throttle.

3. Do the first cut on the side of the tree to which it will fall.



4. Cut through the tree from the other side.



**CAUTION:** If the saw blade becomes blocked, do not pull the product with a sudden movement. That can cause damage to the saw blade, bevel gear, shaft or handlebar. Release the handles, hold the shaft with 2 hands and carefully pull the product.

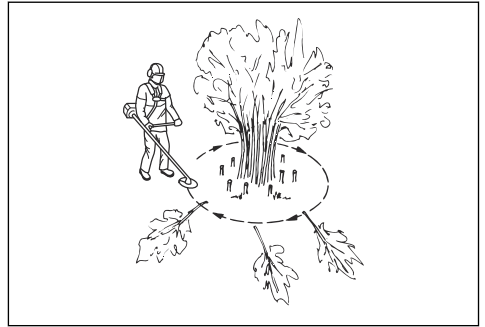
**Note:** Use more cutting pressure to fell small trees. Use less cutting pressure to fell large trees.

### Brush cutting with a saw blade

To fell to the left, push the bottom of the tree to the right.

- Cut down thin trees and brush.
- Move the product from side to side.
- Cut many trees in one movement.

- For groups of thin trees:



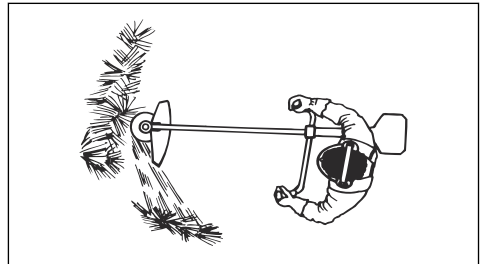
- Cut the outer trees high up.
- Cut the outer trees to the correct height.
- Cut from the center. If you cannot get access to the center, cut the outer trees high up and let them fall. This decreases the risk that the saw blade becomes blocked.

### Grass clearing with a grass blade



**CAUTION:** Do not use grass blades and grass knives on wood. Use grass blades and grass knives for long or heavy grass only.

- Move the product from side to side.
- Start the movement from right to left when you cut. Move the product to the right before you cut again.
- Cut with the left side of the grass blade.



- Angle the grass blade to the left to make the grass fall in a line. This makes it easy to collect the grass.
- Keep a stable position with your feet apart.
- Move forward after each right movement and make sure that you have a stable position again before you cut again.
- Keep the support cup with a light pressure against the ground to make sure that the grass blade does not hit the ground.
- Obey these instructions to decrease the risk that cut material winds around the grass blade:
  - Apply full throttle.

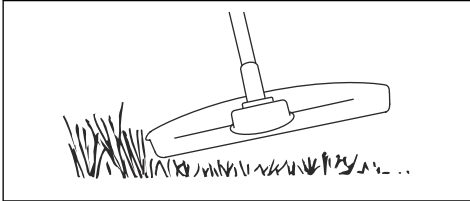
- b) Do not move the grass blade through cut material when you move the product from left to right.
- Before you collect the cut material, stop the engine and remove the product from the harness. Put the product down on the ground.

7. Reduce the risk of material wrapping around the blade by always work at full throttle and avoid the previously cut material during the return stoke.
8. Stop the engine, unclip the harness and place the machine on the ground before you start to collect the cut material.

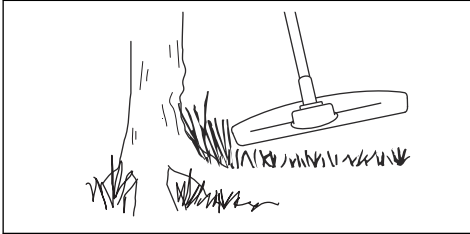
## Grass trimming with a trimmer head

### To trim the grass

1. Hold the trimmer head immediately above the ground at an angle. Do not push the trimmer line into the grass.

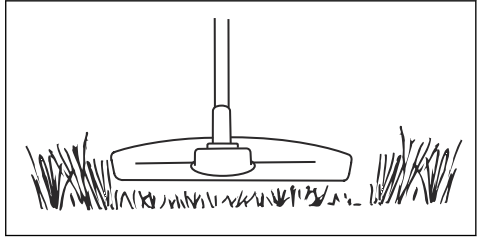


2. Decrease the length of the trimmer line by 10-12 cm / 4-4.75 in.
3. Decrease the engine speed to decrease the risk of damage to plants.
4. Use 80 % throttle when you cut grass near objects.

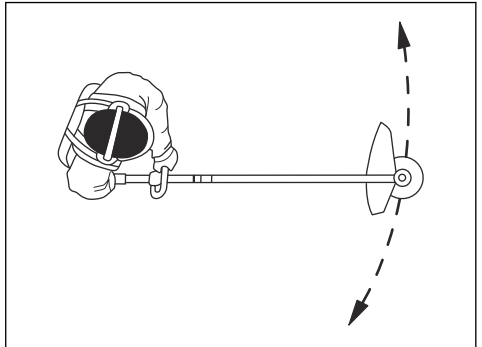


### To cut the grass

1. Make sure that the trimmer line is parallel to the ground when you cut the grass.



2. Do not push the trimmer head to the ground. This can cause damage to the product.
3. Move the product from side to side when you cut grass. Use full speed.



### To clear grass with a grass blade

1. Grass blades and grass cutters must not be used on woody stems.
2. A grass blade is used for all types of tall or coarse grass.
3. The grass is cut down with a sideways, swinging movement, where the movement from right-to-left is the clearing stoke and the movement from left-to-right is the return stoke. Let the left-hand side of the blade (between 8 and 12 o'clock) do the cutting.
4. if the blade is angled to the left when clearing grass, the grass will collect in a line, which makes it easier to collect, e.g. by raking.
5. Try to work rhythmically. Stand firmly with your feet apart. Move forward after the return stoke and stand firmly again.
6. Let the support cup rest lightly against the ground. It is used to protect the blade from hitting the ground.

### To sweep the grass

The airflow from the rotating trimmer line can be used to remove cut grass from an area.

1. Hold the trimmer head and the trimmer line parallel to the ground and above the ground.
2. Apply full throttle.
3. Move the trimmer head from side to side and sweep the grass.



**WARNING:** Clean the trimmer head cover each time you assemble new trimmer line to prevent unbalance and vibrations in the handles. Also do a check of the other parts of the trimmer head and clean it if necessary.

# Maintenance

## Introduction



**WARNING:** Before you do maintenance, you must read and understand the safety chapter.

For all servicing and repair work on the product, special training is necessary. We guarantee the availability of professional repairs and servicing. If your dealer is not a service agent, speak to them for information about the nearest service agent.

For more detailed information, refer to .

## Maintenance schedule

Maintenance	Daily	Weekly	Monthly
Clean the external surface.	X		
Examine the harness for damages.	X		
Examine the quick-release mechanism release on the harness for damages and make sure that it operates correctly.	X		
Do a check of the throttle trigger lockout and the throttle trigger, see <i>To do a check of the throttle trigger lockout on page 7.</i>	X		
Make sure that the cutting attachment does not rotate at idle speed.	X		
Do a check of the stop switch, see <i>To do a check of the stop switch on page 7.</i>	X		
Examine the cutting attachment guard for damages and cracks.	X		
Make sure that the saw blade or grass blade is aligned with the center, that it is sharp and does not have damages by the teeth or the center hole.	X		
Examine the support flange for damages and cracks. Replace if damaged.	X		
Examine the trimmer head for damages and cracks. Replace if damaged.	X		
Examine the handle and handlebar for damage and make sure that they are attached correctly.	X		
For cutting attachments with a support cup, tighten the locking screw fully.	X		
For cutting attachments with a locknut, tighten the locknut fully.	X		
Examine the transport guard for damage and make sure that it can be attached correctly.	X		
Examine the engine, the fuel tank and the fuel lines for leaks.	X		
Clean the air filter. Replace if necessary.	X		
Tighten nuts and screws	X		
Examine the fuel filter for for contamination and the fuel hose for cracks and other defects. Replace if necessary.	X		
Examine all cables and connections.	X		
Examine the starter and the starter rope for damages.		X	
Examine the vibration damping elements for damages and cracks. <sup>1</sup>		X	
Examine the spark plug, see <i>To examine the spark plug on page 24.</i>		X	

<sup>1</sup> Replace the vibration damping elements after each season or at a minimum of once a year.

Maintenance	Daily	Weekly	Monthly
Clean the cooling system.		X	
Clean or replace the spark arrester screen. Refer to <i>To do a check of the muffler on page 8</i> .		X	
Clean the external surface of the carburetor and the area around it.		X	
Make sure that the bevel gear is filled to $\frac{3}{4}$ with grease.		X	
Lubricate the wire			X
Replace the spark plug.			X
Lubricate the drive shaft. <sup>2</sup>			X

## To clean the muffler



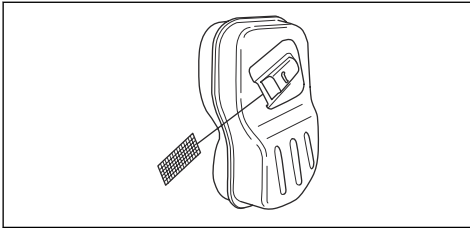
**WARNING:** The muffler gets very hot during and after operation, also at idle speed. Risk of fire and burn injuries.



**WARNING:** A used muffler/spark arrester and spark arrester mounting face may contain deposits of combustion particles on the surfaces that may be carcinogenic. To avoid skin contact and inhalation of such particles when cleaning and/or servicing the spark arrester, make sure you always:

- wear gloves;
- clean and/or service in a well ventilated area;
- do not use pressurized air to clean the spark arrester screen;
- use a steel brush and brush away from your body when cleaning the spark arrester.

1. If the muffler on your product has a spark arrester screen, clean it weekly with a steel brush. Replace the spark arrester screen if it is damaged.



**CAUTION:** A blocked spark arrester screen causes the engine to become too hot

and results in damage to the cylinder and piston.

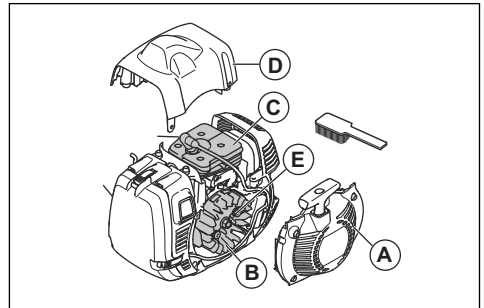


**CAUTION:** If the spark arrester screen is frequently blocked, let your service agent examine the muffler.

## To clean the cooling system and starter pawls

The cooling system includes:

- The air intake on the starter (A)
- The fins on the flywheel (B)
- The cooling fins on the cylinder (C)
- The cylinder cover (D)
- The starter pawls (E) that are found on the flywheel



Clean the cooling system weekly or more frequently if it is necessary.

1. Remove the starter cover and the cylinder cover.
2. Clean the cooling system with a brush.
3. Examine the starter pawls and area around them for dirt.
4. Clean around the starter pawls with a brush, to make sure that they can move freely.

<sup>2</sup> At an interval of 3 months.

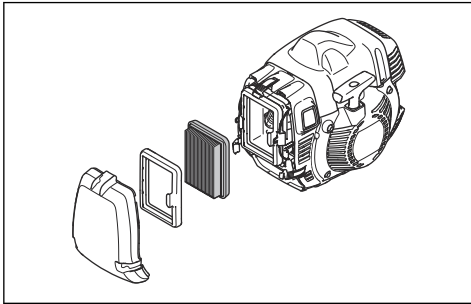
## Air filter

A dirty air filter can cause carburetor malfunction, start problems, loss of engine power and wear to engine parts. It also makes the engine use more fuel than necessary. Clean the filter at an interval of 8 hours, or more frequently if the product is operated in a dusty environment.

**Note:** An engine adjustment can be necessary when the air filter has been cleaned or replaced. See *To adjust the engine on page 25*.

### To do a check of a paper air filter

1. Remove the air filter cover.
2. Open the 2 hooks that hold the filter frame.
3. Remove the filter frame and the air filter.



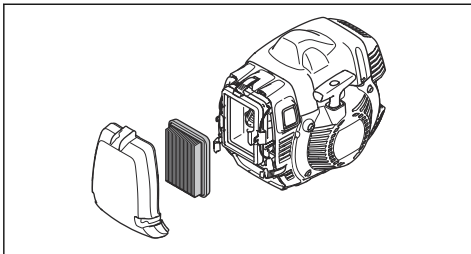
4. Examine and clean the filter housing with a brush.
5. Examine the filter. Replace the filter if it is dirty or damaged.



**CAUTION:** Do not bend or fold the filter as this can cause damage to the filter. A damaged filter must always be replaced.

### To clean a nylon air filter

1. Remove the air filter cover.



2. Release the hooks that holds the air filter.
3. Remove the air filter.
4. Examine and clean the filter housing with a brush.
5. Examine the filter. Clean the filter with warm soap water. Replace the filter if it is damaged.

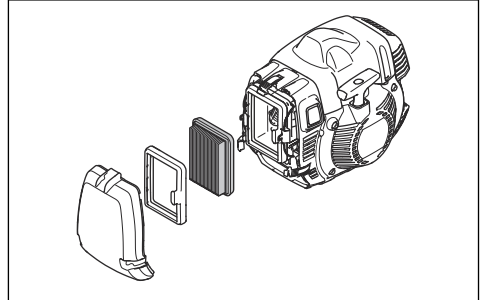


**CAUTION:** A damaged filter must always be replaced.

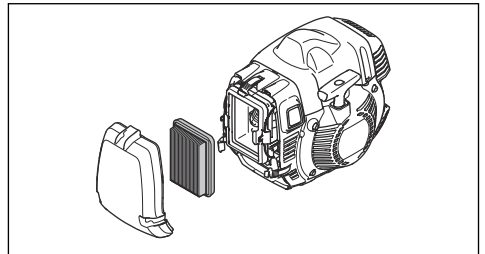
### To change from a paper air filter to a nylon air filter

Use a nylon air filter when the temperature is below 5°C/ 41°F.

1. Remove the air filter cover.
2. Open the 2 hooks that hold the filter frame.
3. Remove the filter frame and the air filter.



4. Examine and clean the filter housing with a brush.
5. Examine the filter. Replace the filter if it is dirty or damaged.
6. Install the nylon air filter.



7. Close the 2 hooks and make sure that they hold the filter correctly.
8. Attach the air filter cover.

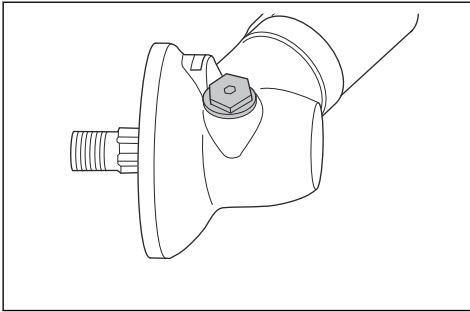


**CAUTION:** Do not bend or fold the filter as this can cause damage to the filter. A damaged filter must always be replaced.

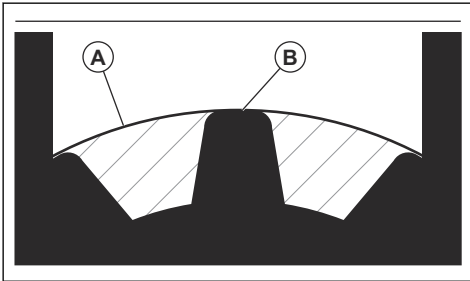
### To lubricate the bevel gear

1. Remove the cutting equipment.
2. Put the product with the grease plug at its highest position.

3. Remove the grease plug.



4. Look into the grease plug hole and turn the drive shaft. The grease level (A) must be in level with the top of the gear cogs (B).



5. If the grease level is too low fill the bevel gear with Husqvarna bevel gear grease. Fill slowly and turn the drive shaft as you apply the bevel gear grease, stop at the correct level (B).



**CAUTION:** An incorrect quantity of grease can cause damage to the bevel gear.

6. Install the grease plug.

### Drive shaft

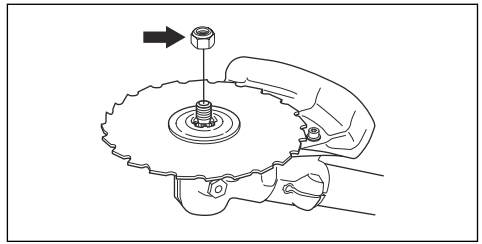
Lubricate the drive shaft at an interval of 3 months. Let a service agent help you if you are not sure about the procedure.

### To attach and remove the locknut

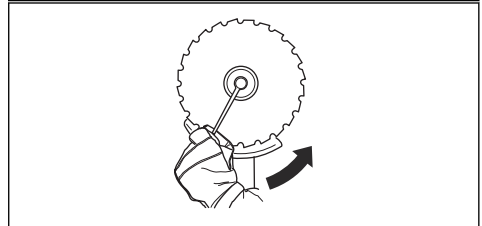
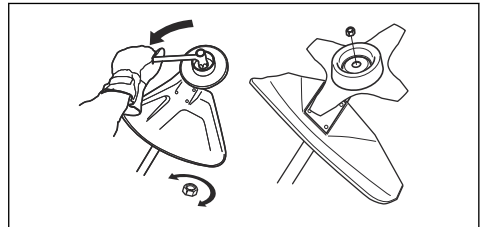


**WARNING:** Stop the engine, use protective gloves and be careful around the sharp edges of the cutting attachment.

Use the locknut to attach some types of cutting attachments. The locknut has a left thread.



- Use a socket wrench with a shaft that is sufficiently long to let you keep your hand behind the cutting attachment guard. The arrow in the illustration shows the area where you can safely operate the socket wrench.



- To attach, tighten the locknut in the opposite direction to how the cutting attachment rotates.
- To remove the locknut, turn it in the same direction as how the cutting attachment rotates.
- Keep count when you remove and attach the locknut. Replace the locknut after approximately 10 times.

**Note:** Make sure that you can not turn the locknut by hand. Replace the locknut if the nylon lining does not have a resistance of a minimum of 1.5 Nm.

### To examine the spark plug

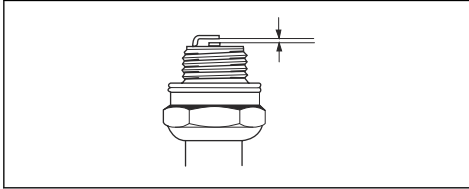


**CAUTION:** Always use the recommended spark plug type. Incorrect spark plug type can cause damage to the product.

- Examine the spark plug if the engine is low on power, is not easy to start or does not operate correctly at idle speed.



- To decrease the risk of unwanted material on the spark plug electrodes, obey these instructions:
  - a) Make sure that the idle speed is correctly adjusted.
  - b) Make sure that the fuel mixture is correct.
  - c) Make sure that the air filter is clean.
- If the spark plug is dirty, clean it and make sure that the electrode gap is correct, refer to *Technical data on page 28*.



- Replace the spark plug if it is necessary.

## To adjust the engine

Follow these instructions if the engine does not operate correctly.

1. Attach an approved cutting attachment, see *Accessories on page 29*.
2. Start the engine.
3. Operate the product in usual conditions for 3 minutes.
4. Lift the cutting attachment in the air and apply full throttle for 30 seconds. If a trimmer head is used, make sure that the trimmer line is cut to correct length by the guard knife.

**Note:** Do not cut grass or branches during this step.

5. Operate the product in usual conditions to make sure that the engine operates correctly.
6. If the engine does not operate correctly, do step 4 and 5 again 3 times.
7. Let your Husqvarna dealer adjust/repair the product if the engine does not operate correctly after you have done all these steps.

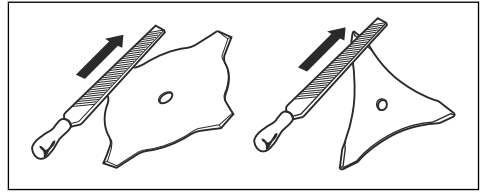
## To sharpen the grass knife and grass blade



**WARNING:** Stop the engine. Use protective gloves.

- To sharpen the grass knife or grass blade correctly, refer to the instructions that come with the cutting attachment.
- Sharpen all edges equally to keep the balance.

- Use a single-cut flat file.



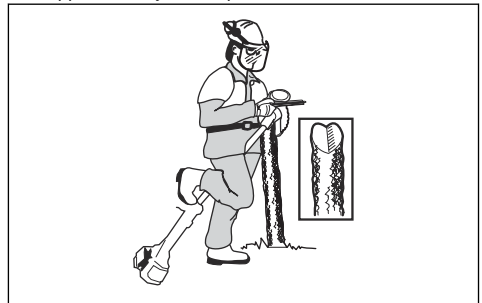
**WARNING:** Always discard a blade that is damaged. Do not try to make a bent or twisted blade straight and use it again.

## To sharpen the saw blade

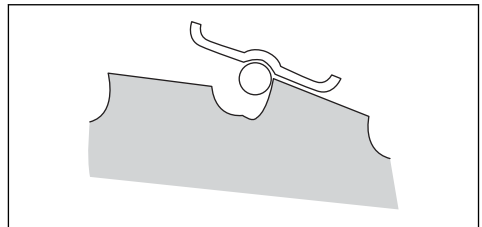


**WARNING:** Stop the engine. Use protective gloves.

- To sharpen the blade correctly, refer to the instructions that come with the blade.
- Make sure that the product and blade has sufficient support when you sharpen it.

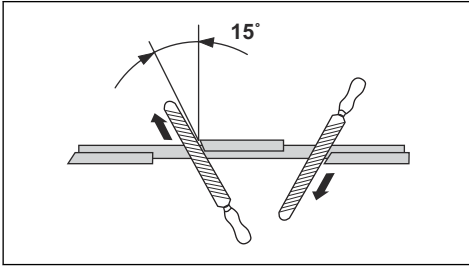


- Use a 5.5 mm round file with a file holder.



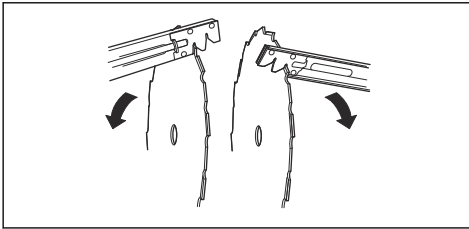
- Hold the file at an angle of 15°.

- Sharpen one tooth of the saw blade to the right and the next tooth to the left, see the illustration.



**Note:** Sharpen the edges of the teeth with a flat file if the blade is heavily worn. Continue to sharpen with a round file.

- Sharpen all edges equally to keep the blade balanced.
- Adjust the blade set to 1 mm with the recommended setting tool. Refer to the instructions that come with the blade.

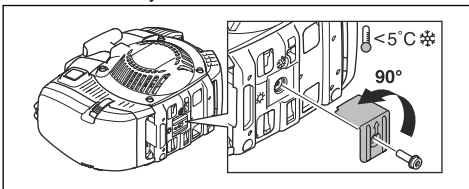


**WARNING:** Always discard a blade that is damaged. Do not try to make a bent or twisted blade straight and use it again.

## To adjust the product for cold environments

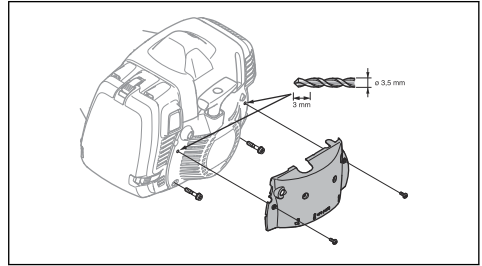
If the temperature is 5° or colder, adjustments are necessary to prevent operation problems.

- Attach the air duct as shown in the illustration. Make sure that the arrow points in the direction of the winter mode symbol.



- Replace the air filter cover with the winter mode air filter cover.

- If you operate the product in snow, attach a cover on top of the starter.



- Replace the air paper filter with a nylon air filter that is approved for operation in winter conditions. Refer to, *To change from a paper air filter to a nylon air filter on page 23.*
- For 545FXT AT, make sure that the wire is lubricated when you operate the product in cold environments.
- At temperatures of more than 5°, change back to the regular air filter cover. Remove the cover on top of the starter and adjust the air duct back to the initial position. Make sure that the arrow points in the direction of the summer mode symbol.



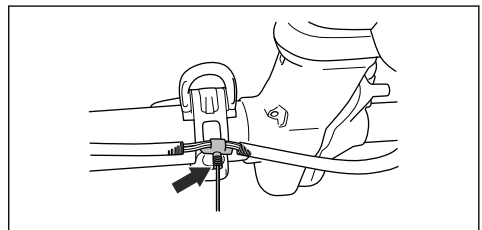
**CAUTION:** Do not operate the product at temperatures of more than than 5° if it is adjusted for winter mode. The engine becomes too hot and can be damaged.

## To lubricate the wire

545FXT AT

**Note:** The wire is lubricated at the factory. Lubricate the wire monthly.

- Remove the protective cover.
- Remove the cylinder cover to get access to the rubber bellows on the wire.
- Remove the plug on the grease nipple.
- Use antifreeze spray with a 2 mm spray tube. Spray in short intervals.



- Examine the rubber bellows on the wire to make sure that it does not expand.
- Attach the cylinder cover and the protective cover.

## Troubleshooting

### The engine does not start

Check	Possible cause	Procedure
Stop switch.	The stop switch is in the stop position.	Let an approved service agent replace the stop switch.
Starter pawls.	The starter pawls cannot move freely.	Remove the starter cover and clean around the starter pawls. See <i>To clean the cooling system and starter pawls on page 22.</i>
		Let an approved service agent help you.
Fuel tank.	Incorrect fuel type.	Drain the fuel tank and fill with correct fuel.
Spark plug.	The spark plug is dirty or wet.	Make sure that the spark plug is dry and clean.
	The spark plug electrode gap is incorrect.	Clean the spark plug. Make sure that the electrode gap is correct. Make sure that the spark plug has a suppressor.
		Refer to technical data for correct electrode gap.
	The spark plug is loose.	Tighten the spark plug.

### The engine starts but stops again

Check	Possible cause	Procedure
Fuel tank	Incorrect fuel type.	Empty the fuel tank and fill it with correct fuel.
Air filter	The air filter is clogged.	Clean the air filter.

## Transportation, storage and disposal

### Transportation and storage

- Let the product cool before transportation or storage.
- Remove the spark plug cap before long-term storage.
- Attach the product during transportation. Make sure that it cannot move.
- Make sure that there is no risk of fuel leaks, fuel fumes, sparks or flames during transportation and storage.

- Attach the transport guard during transportation and storage.
- Clean and do servicing on the product before long-term storage.

### Disposal

- Obey the local recycling requirements and applicable regulations.
- Discard all chemicals, such as oil or fuel, at a service center or at an applicable disposal location.

- When the product is no longer in use, send it to a Husqvarna dealer or discard it at a recycling location.

## Technical data

### Technical data

	545RXT AT	545FX AT	545FXT AT
<b>Engine</b>			
Cylinder displacement, cm <sup>3</sup>	45.7	45.7	45.7
Cylinder bore, mm	42	42	42
Stroke, mm	33	33	33
Idle speed, rpm	2700	2700	2700
Speed of output shaft, rpm	8800	9700	9700
Max. engine output, according to ISO 8893, kW/rpm	2.2/9000	2.2/9000	2.2/9000
<b>Ignition system</b>			
Spark plug	NGK CMR6H	NGK CMR6H	NGK CMR6H
Electrode gap, mm	0.5	0.5	0.5
<b>Fuel</b>			
Fuel tank capacity, litre/cm <sup>3</sup>	1.0/1000	1.0/1000	1.0/1000
<b>Weight</b>			
Without fuel, cutting attachment and guard, kg	8.6	8.2	8.4
<b>Noise emissions</b> <sup>3</sup>			
Sound power level, measured dB (A)	115	115	115
Sound power level, guaranteed L <sub>WA</sub> dB (A)	116	116	116
<b>Sound levels</b> <sup>4</sup>			
Equivalent sound pressure level at the operator's ear, measured according to EN ISO 11806 and ISO 22868, dB(A):			
Equipped with trimmer head (original)	102	102	102
Equipped with grass blade (original)	101	101	101
Equipped with saw blade (original)	–	99	99
<b>Vibration levels</b> <sup>5</sup>			

<sup>3</sup> Noise emissions in the environment measured as sound power (L<sub>WA</sub>) in conformity with EC directive 2000/14/EC. Reported sound power level for the machine has been measured with the original cutting attachment that gives the highest level. The difference between guaranteed and measured sound power is that the guaranteed sound power also includes dispersion in the measurement result and the variations between different machines of the same model according to Directive 2000/14/EC.

<sup>4</sup> Reported data for noise pressure level has a typical statistical dispersion (standard deviation) of 1.2 dB (A).

<sup>5</sup> Reported data for vibration level has a typical statistical dispersion (standard deviation) of 0.2 m/s<sup>2</sup>.

	545RXT AT	545FX AT	545FXT AT
Equivalent vibration levels ( $a_{hv,eq}$ ) at handles, measured according to EN ISO 11806 and ISO 22867, m/s <sup>2</sup> :			
Equipped with trimmer head (original), left/right	3.2/3.2		
Equipped with grass blade (original), left/right	3.3/3.5		
Equipped with saw blade (original), left/right	–	2.9/3.3	3.5/3.2

## Accessories

### Accessories 545RXT AT

Approved accessories	Accessory type	Cutting attachment guard, art. no.
Centre hole in blades/knives, Ø 25.4 mm	Output shaft thread M12	
Grass blade/grass knife	Multi 255-3 (Ø 255, 3 teeth)	537 28 85 / 544 46 43
	Multi 275-4 (Ø 275, 4 teeth)	537 28 85 / 544 46 43
	Multi 300-3 (Ø 300 3 teeth)	537 28 85 / 544 46 43
Saw blade	Maxi XS 200-26 (Ø 200, 26 teeth)	537 31 09
	Scarlet 200-22 (Ø 200, 22 teeth)	537 31 09
Plastic blades	Tricut Ø 300 mm (Separate blades have part number 531 01 77-15)	537 28 85 / 544 46 43
Trimmer head	T55x (Ø 2.7–3.3 mm cord)	503 95 43 / 544 46 43
	Trimmy S II (Ø 2.4–3.3 mm cord)	503 95 43 / 544 46 43
	T45x (Ø 2.7–3.3 mm cord)	503 95 43 / 544 46 43
Support cup	Fixed	

### Accessories for 545FX AT, 545FXT AT

Approved accessories	Accessory type	Cutting attachment guard, art. no.
Centre hole in blades/knives, Ø 25.4 mm	Output shaft thread M12	
Grass blade/grass knife	Multi 255-3 (Ø 255, 3 teeth)	537 29 74 / 544 46 43
	Multi 275-4 (Ø 275, 4 teeth)	537 29 74 / 544 46 43
	Multi 300-3 (Ø 300 3 teeth)	537 29 74 / 544 46 43

Approved accessories	Accessory type	Cutting attachment guard, art. no.
Saw blade	Maxi 200-26 (Ø 200, 26 teeth)	574 53 26
	Scarlet 200-22 (Ø 200, 22 teeth)	574 53 26
	Scarlet 225-24 (Ø 225, 24 teeth)	574 50 67
	Maxi 225-24T BACHO (Ø 225, 24 teeth)	574 50 67
Plastic blades	Tricut Ø 300 mm (Separate blades have part number 531 01 77-15)	537 29 74 / 544 46 43
Trimmer head	Trimmy S II (Ø 2.4–3.3 mm cord)	537 29 73 / 544 46 43
	Auto 55 (Ø 2.7–3.3 mm cord)	537 29 73 / 544 46 43
	T45x (Ø 2.7–3.3 mm cord)	537 29 73 / 544 46 43
	T55x (Ø 2.7–3.3 mm cord)	537 29 73 / 544 46 43
Support cup	Fixed	

---

## Registered trademarks

---

The *Bluetooth*<sup>®</sup> word mark and logos are registered trademarks owned by *Bluetooth SIG, inc.* and any use of such marks by Husqvarna is under license.

---

# Declaration of Conformity

---

## EU Declaration of conformity

We, **Husqvarna AB**, SE-561 82 Huskvarna, Sweden, tel: +46-36-146500, declare on our sole responsibility that the product:

<b>Description</b>	Brush cutters
<b>Brand</b>	Husqvarna
<b>Type / Model</b>	545RXT AutoTune®, 545FX AutoTune®, 545FXT AutoTune®
<b>Identification</b>	Serial numbers dating from 2020 and onwards

complies fully with the following EU directives and regulations:

<b>Regulation</b>	<b>Description</b>
2006/42/EC	"relating to machinery"
2014/30/EU	"relating to electromagnetic compatibility"
2000/14/EC	"relating to the noise emissions in the environment"
2011/65/EU	"on the restriction of the use of certain hazardous substances in electrical and electronic equipment"

and that the following standards and/or technical specifications are applied: EN ISO 12100:2010, EN ISO 11806-1:2011, ISO 14982:2009, EN IEC 63000:2018EN ISO 12100:2010, EN ISO 14982:2009, EN IEC 63000:2018, EN ISO 11806-1:2011



RISE SMP Svensk Maskinprovning AB, Box 7035, SE-750 07 Uppsala, Sweden has performed voluntary type examination on behalf of Husqvarna AB.

Certificate Number: SEC/16/2458

RISE SMP Svensk Maskinprovning AB, Box 7035, SE-750 07 Uppsala, Sweden, has also verified agreement with appendix V of the council's directive 2000/14/EG.

For information relating to noise emissions, refer to *Technical data on page 28*.

Huskvarna, 2022-04-11

Two handwritten signatures in black ink. The first signature is 'Stefan Holmberg' and the second is 'J. Holmberg'.

Stefan Holmberg, R&D Director, Technology Management, Husqvarna AB

Responsible for technical documentation

## UK Declaration of conformity

We, **Husqvarna AB**, SE-561 82 Huskvarna, Sweden, tel: +46-36-146500, declare on our sole responsibility that the product:

<b>Description</b>	Brush cutters
<b>Brand</b>	Husqvarna
<b>Type / Model</b>	545RXT AutoTune®, 545FX AutoTune®, 545FXT AutoTune®
<b>Identification</b>	Serial numbers dating from 2022 and onwards

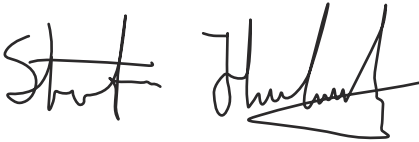
complies fully with the following UK regulations:

<b>Description</b>
The Supply of Machinery (Safety) Regulations 2008
Electromagnetic Compatibility Regulations 2016
The Noise Emission in the Environment by Equipment for use Outdoors Regulations 2001, Schedule 8
The Restriction of the Use of Certain Hazardous Substances in Electrical and Electronic Equipment Regulations 2012

and that the following standards and/or technical specifications are applied: EN ISO 12100:2010, EN ISO 11806-1:2011, ISO 14982:2009, EN IEC 63000:2018

For information relating to noise emissions, refer to *Technical data on page 28*.

Huskvarna, 2022-04-11



Stefan Holmberg, R&D Director, Technology Management, Husqvarna AB

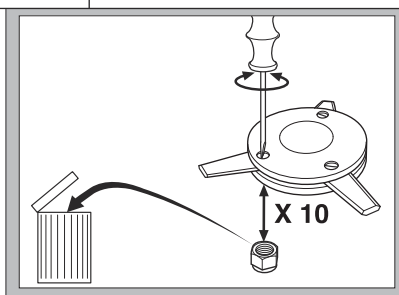
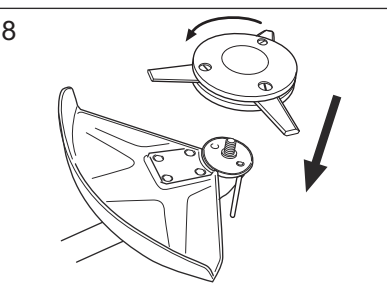
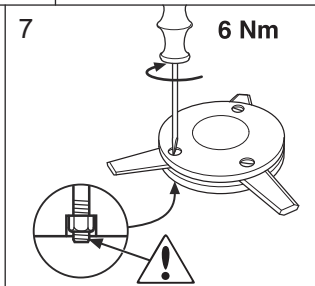
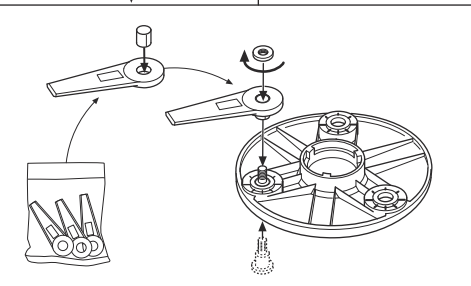
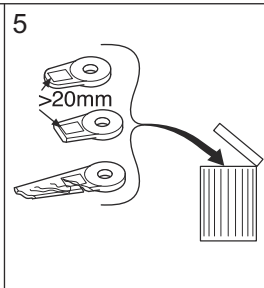
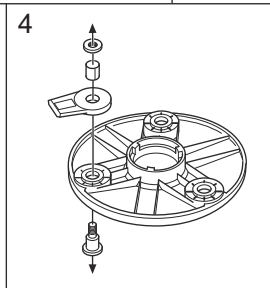
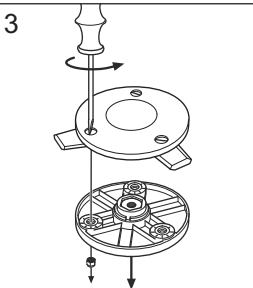
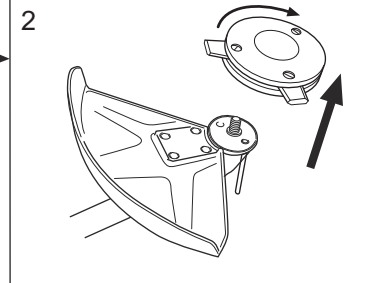
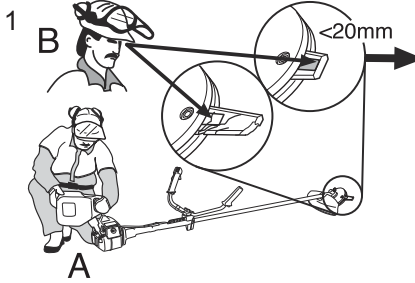
Responsible for technical documentation

**UK  
CA**

UK Importer:  
Husqvarna UK Ltd  
Preston Road, Co. Durham  
DL5 6UP



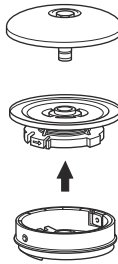
# Tri Cut



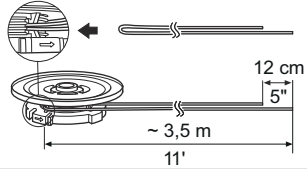
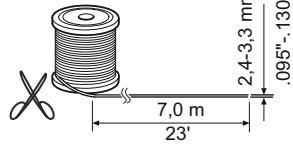
# Trimmy SII



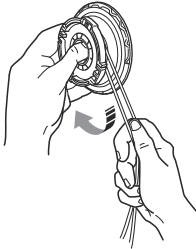
1



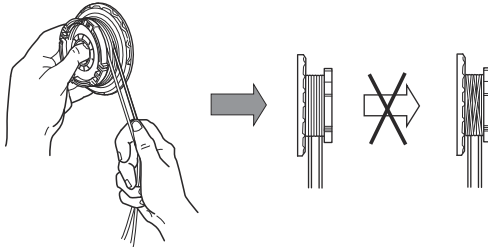
2



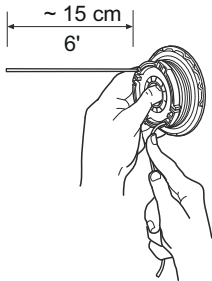
3



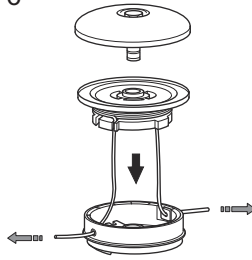
4



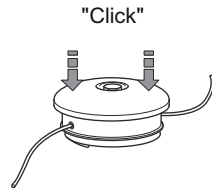
5



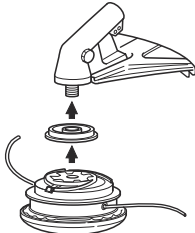
6



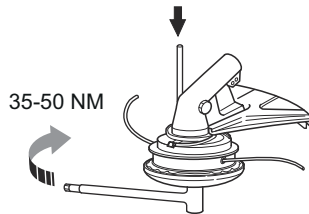
7



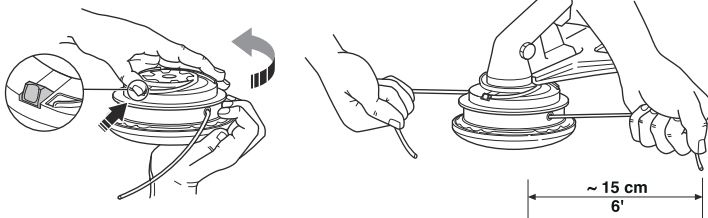
8



9



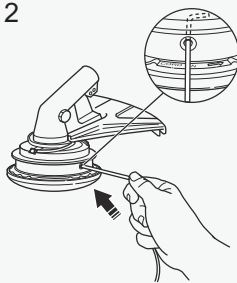
# Trimmy SII



1



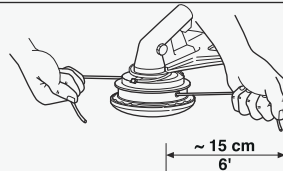
2



3



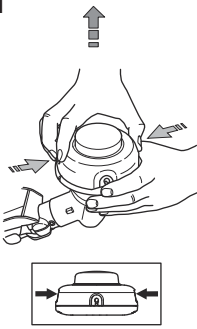
4



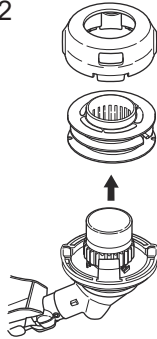
T55x



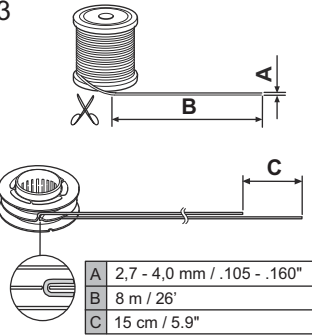
1



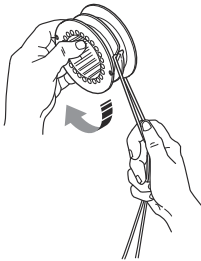
2



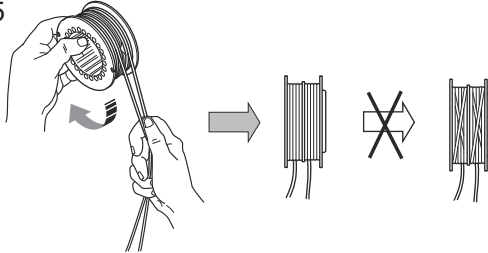
3



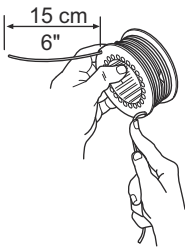
4



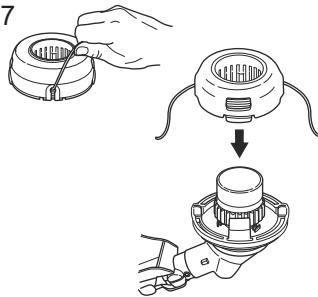
5



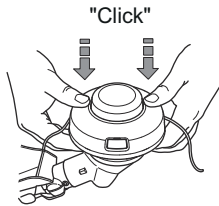
6



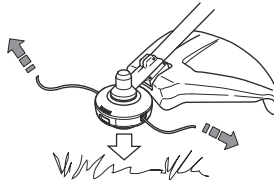
7



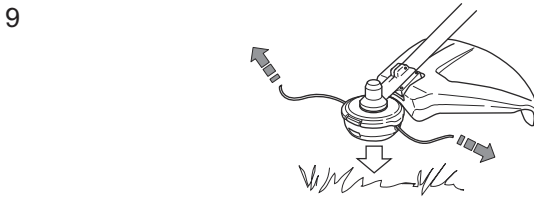
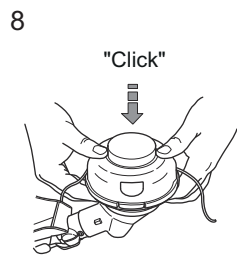
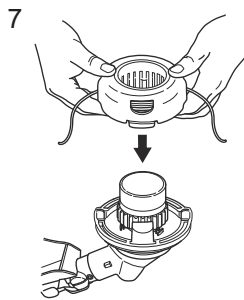
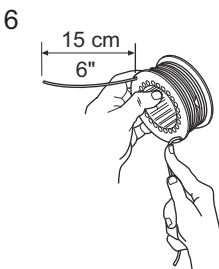
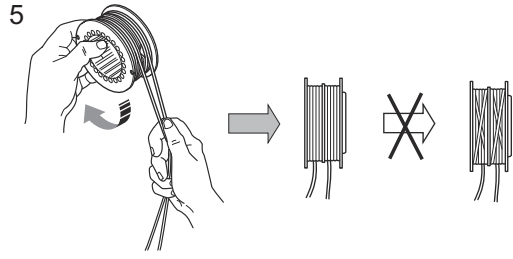
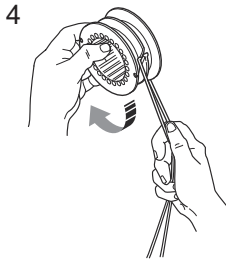
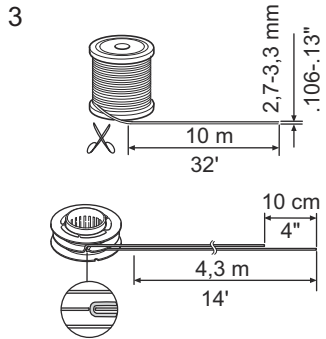
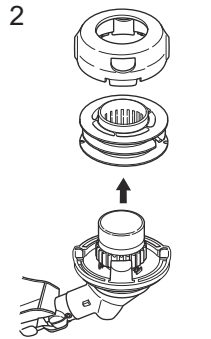
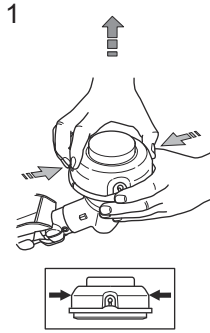
8



9



T45, T45x









[www.husqvarna.com](http://www.husqvarna.com)

Original instructions



1143110-26



2023-06-15