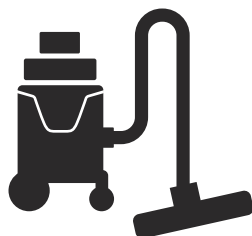




Husqvarna®



WDC 220, WDC 225, WDC 325L

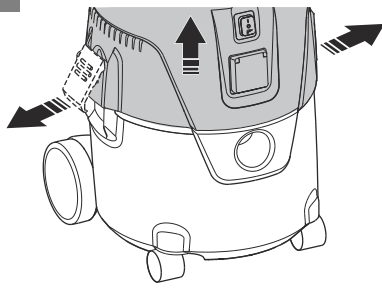


EN	Operator's manual	7-18
AR	دليل المشغل	19-29
BG	Ръководство за експлоатация	30-43
CS	Návod k použití	44-56
DA	Brugsanvisning	57-68
DE	Bedienungsanweisung	69-82
EL	Οδηγίες χρήσης	83-96
ES	Manual de usuario	97-109
ET	Kasutusjuhend	110-121
FI	Käyttöohje	122-133
FR	Manuel d'utilisation	134-146
HR	Priručnik za korištenje	147-158
HU	Használati utasítás	159-171
IT	Manuale dell'operatore	172-184
JA	取扱説明書	185-196
KO	사용자 설명서	197-208
LT	Operatoriaus vadovas	209-220
LV	Lietošanas pamācība	221-233
NL	Gebbruiksaanwijzing	234-246
NO	Bruksanvisning	247-258
PL	Instrukcja obsługi	259-271
PT	Manual do utilizador	272-284
RO	Instrucțiuni de utilizare	285-297
RU	Руководство по эксплуатации	298-310
SK	Návod na obsluhu	311-322
SL	Navodila za uporabo	323-334
SR	Priručnik za rukovaoca	335-346
SV	Bruksanvisning	347-358
TR	Kullanım kılavuzu	359-369
UK	Посібник користувача	370-383
ZH	操作手册	384-393

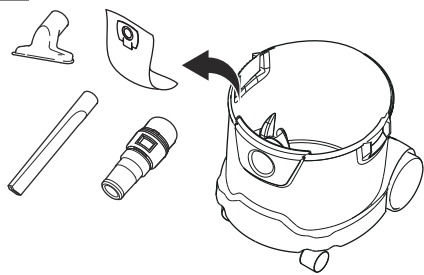
7



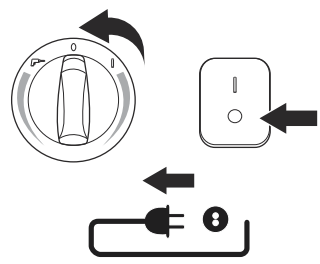
8



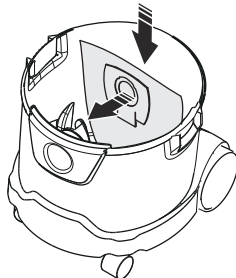
9



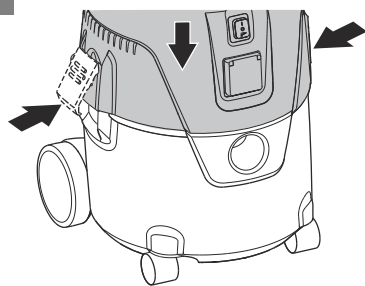
10



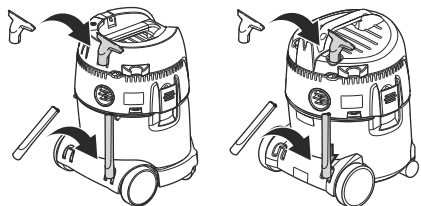
11



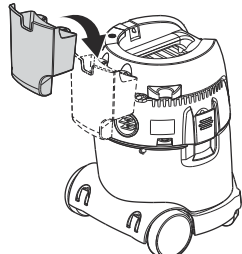
12



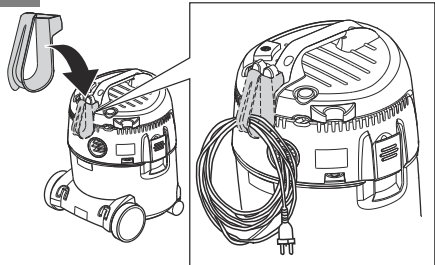
13



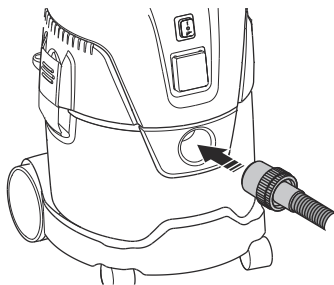
14



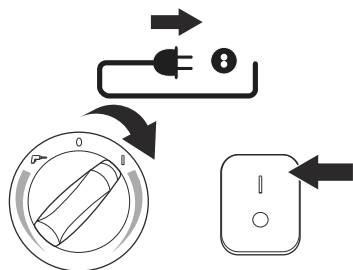
15



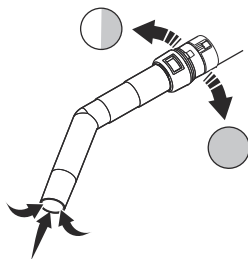
16



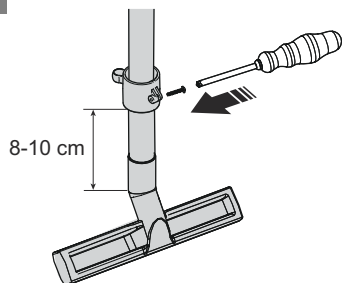
17



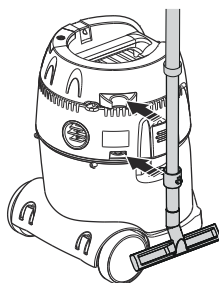
18



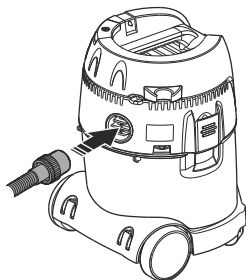
19



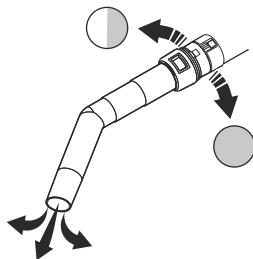
20



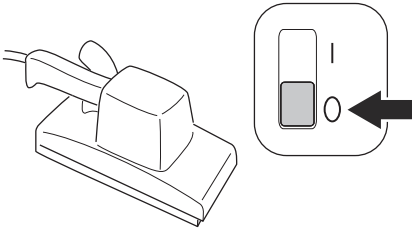
21



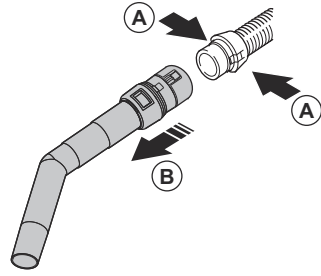
22



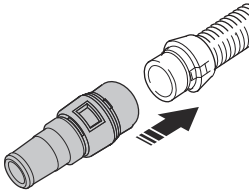
23



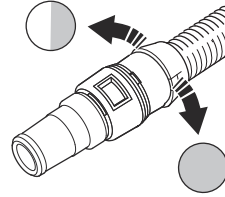
24



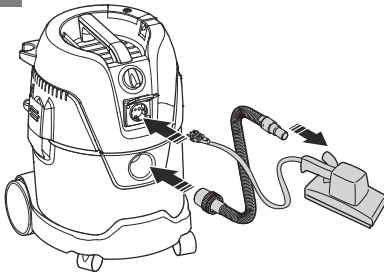
25



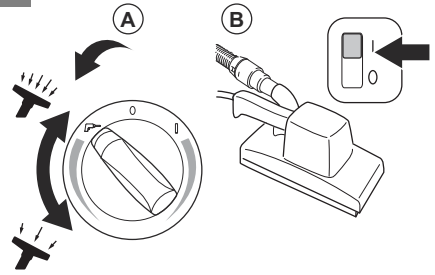
26



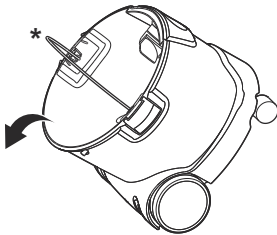
27



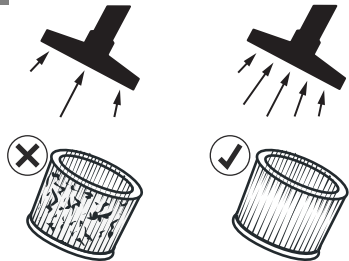
28



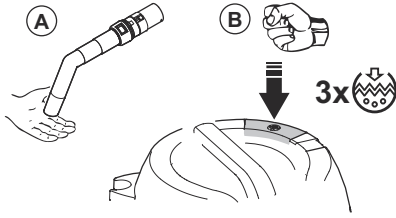
29



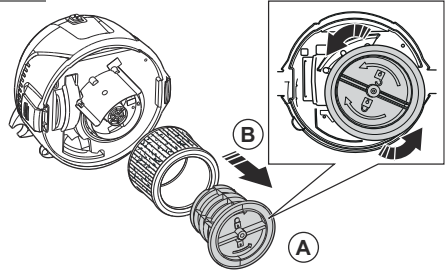
30



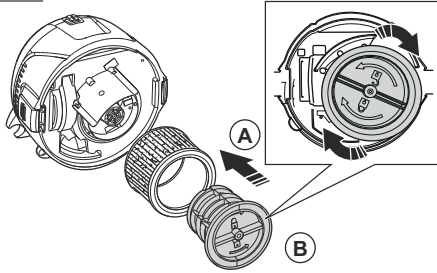
31



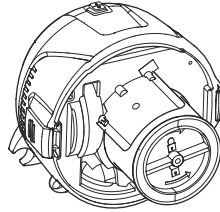
32



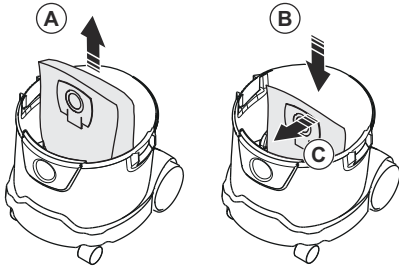
33



34



35



Contents

Introduction.....	7	Maintenance.....	13
Safety.....	8	Transportation, storage and disposal.....	15
Assembly.....	12	Technical data.....	16
Operation.....	12	Declaration of Conformity.....	17

Introduction

Product description

The product is a multi purpose vacuum-cleaner designed for commercial use.

Intended use

Use the product to clean dry, non-flammable dust and liquids.

Product overview WDC 220, WDC 225

(Fig. 1)

1. Main switch
2. Filter cleaning system
3. Vacuum inlet
4. Wheels
5. Cable holder, Hose holder
6. Filter bag

Read and obey the safety instructions and the operator's instructions.

Only do maintenance and repair on the product that is specified by the manufacturer.

The manufacturer accepts no liability for damage that is a result of incorrect use, incorrect maintenance or incorrect repair.

7. Nozzle
8. Handle
9. Floor nozzle
10. Crevice nozzle
11. Operator's manual
12. Extension tube
13. Hose

Product overview WDC 325L

(Fig. 2)

1. Main switch
2. Filter cleaning system
3. Vacuum inlet
4. Wheels
5. Cable holder, Hose holder
6. Filter bag
7. Nozzle
8. Handle
9. Floor nozzle
10. Crevice nozzle
11. Operator's manual
12. Extension tube
13. Hose
14. Power tool adaptor
15. Electrical connection for power tool
16. Tool box

(Fig. 5) Do not discard the unit with domestic waste. Obey the local requirements.

(Fig. 6) The product agrees with the applicable EC directives.

Note: Other symbols/decals on the product refer to certification requirements for other commercial areas.

Dust Class L

(Fig. 7)

Observe the safety advice and associated measures for Dust Class L.

Product damage

We are not responsible for damages to our product if:

- the product is incorrectly repaired.
- the product is repaired with parts that are not from the manufacturer or not approved by the manufacturer.
- the product has an accessory that is not from the manufacturer or not approved by the manufacturer.
- the product is not repaired at an approved service center or by an approved authority.

Symbols on the product

(Fig. 3) Read the operator's manual carefully and make sure that you understand the instructions before use.

(Fig. 4) The unit has double insulation.

Safety

Safety definitions

Warnings, cautions and notes are used to point out specially important parts of the manual.



WARNING: Used if there is a risk of injury or death for the operator or bystanders if the instructions in the manual are not obeyed.



CAUTION: Used if there is a risk of damage to the product, other materials or the adjacent area if the instructions in the manual are not obeyed.

Note: Used to give more information that is necessary in a given situation.

General safety instructions



WARNING: Read the warning instructions that follow before you use the product.

- If the product and/or an accessory is damaged it must be repaired by an approved service center. Do not use a damaged product.
- Do not let a child operate the product. Do not let a person, without knowledge of the instructions operate or do maintenance on the product.
- The product must only be operated under supervision.
- Make sure that you always monitor a person, with decreased physical capacity or mental capacity, that uses the product.
- Children must be monitored to make sure that they do not play with the product.
- Do not use dangerous work procedures.
- Do not use the product without the filters in correct position.
- Stop the product and disconnect the mains plug in the following situations:
 - Before cleaning and maintenance.
 - Before repair.
 - If there is foam or liquid in the area.
- Do not go away from the product when it is connected. Disconnect the mains plug when it is not in operation and before maintenance.
- Do not use the product if the cord or the plug is damaged. Hold the plug, not the cord, to disconnect. Do not hold the plug or the product with wet hands. Reset all controls before disconnecting.
- Do not pull the product by the cord. Do not use the cord as a handle. Do not close a door on the cord, or pull the cord around sharp edges or corners. Do not run the

product on the cord. Keep the cord away from hot surfaces.

- Keep hair, loose clothing, fingers and all parts of the body away from openings and moving parts. Do not put objects into the openings or use with the opening blocked. Keep the openings free of dust, lint, hair, and anything else that can decrease the flow of air.
- Do not vacuum clean dangerous dust with WDC 220, WDC 225.
- Do not vacuum clean flammable or flammable liquids such as gasoline. Do not use the product in areas where such products may be.
- Do not vacuum clean anything that is burning or smoking, such as cigarettes, matches or hot ashes.
- Be careful when cleaning on stairs.
- If foam or liquid comes from the product, stop the product immediately.
- Do not use the product as a water pump.
- Connect the product to a correctly grounded mains socket. The socket outlet and the extension cable must have an operative protective conductor (only applicable to non double-insulated products).
- Make sure that there is good airflow at the work area.
- Do not use the product as a ladder or step ladder.
- When dust removers are used, the rate at which air is exchanged in the room must be adequate if the exhaust air from the vacuum cleaner is blown into the room. Obey the national regulations before use.
- For Dust Class L products, WDC 325L, tell and train the operator before use:
 - How to use the product.
 - The risks of the material to be picked up.
 - Safe disposal of the picked up material.
- For Dust Class L products, WDC 325L, the following applies:
 - Use the product to clean dry, non-flammable dust and liquids, dangerous dusts with OEL¹⁾ value > 1mg/m³. Dust Class L (IEC 60335-2-69). The dust with this class has OEL¹⁾ values > 1mg/m³.

- Products with the Dust Class L, has a tested filter material. The maximum degree of permeability is 1%. There is no special requirement for disposal.

Note: Refer to local laws. They can regulate the age of the operator.

Safety for double-insulated products



WARNING: Only use the product as given in this manual and only with the manufacturer's recommended accessories.



WARNING: Only applicable to UK: Read these important instructions. These instructions have been prepared with safety and efficiency paramount. The operator must be trained by an approved instructor and must understand these instructions for operation. The operator must know all the related regulations and legislation in force at the time of operation.



WARNING: Before you connect the product: Make sure that the mains voltage and the mains frequency of the power supply match the data on the rating plate of the wet/dry vacuum cleaner.



WARNING: This product has double insulation. Use only Husqvarna replacement parts. See instructions on how to do service on double-insulated products.



WARNING: The product has a special cord. If the cord is damaged, it must be replaced by a cord of the same type. This is available at approved service centers and dealers and must be installed by approved personnel.



WARNING: Service on a double-insulated product requires knowledge of the system. In a double-insulated products, two systems of insulation are provided instead of grounding. No grounding means is provided on a double-insulated product, nor should a mean for grounding be added to the appliance. Service must be done only by

approved service personnel. Replacement parts for a double-insulated product must be identical to the parts they replace. A double- insulated product is marked with the words "DOUBLE INSULATION" or "DOUBLE INSULATED." A symbol may also be used on the product.

Electrical safety

- It is recommended that the vacuum-cleaner should be connected via a residual current circuit breaker.
- Arrange the electrical parts (sockets, plugs and couplings) and lay down the extension lead so that the protection class is maintained.
- Connectors and couplings of power supply cords and extension leads must be watertight.

Extension lead

- As an extension lead, only use the version specified by the manufacturer or one of a higher quality.
- When using an extension lead, check the minimum cross-sections of the cable:

Cable length	Cross section	
	< 16 A	< 25 A
< 20 m	1.5 mm ²	2.5 mm ²
20-50 m	2.5 mm ²	4.0 mm ²



WARNING: The upper section of the vacuum-cleaner contains live components. Contact with live components leads to serious or even fatal injuries.

- Never spray water on to the upper section of the vacuum-cleaner.



WARNING: Electric shock due to faulty mains connecting lead. Touching a faulty mains connecting lead can

result in serious or even fatal injuries.

- Do not damage the mains power lead (for example by driving over it, pulling or crushing it).
 - Regularly check whether the power cord is damaged or shows signs of ageing.
 - If the electric cable is damaged, it must be replaced by an authorized Husqvarna distributor or similar qualified person in order to avoid a hazard.
 - In no circumstances should the power supply cord be wrapped around fingers or any part of the operator's body.
-



CAUTION: The appliance socket (only on some models) is only designed for the purposes defined in the operating instructions. The connection of different appliances can result in damage.

- Prior to plugging in an appliance, always stop the product and the appliance that is to be connected.

- Read the operating instructions to the appliance to be connected and observe the safety notes contained in these.
-



CAUTION: Damage due to unsuitable mains voltage. The appliance can be damaged as a result of being connected to an unsuitable mains voltage.

- Make sure that the mains voltage and the mains frequency of the power supply match the data on the rating plate of the wet/dry vacuum cleaner.

Safety instructions for operation

To clean liquids



CAUTION: Do not clean flammable liquids.

- Remove the filter bag before you start to clean liquids. Do a check that the float or the water level limit function correctly.
- Use a special filter element or filter screen.
- If foam comes from the product, stop the work immediately and empty the tank.

Dangerous materials



WARNING: Do not clean dangerous materials. This can cause injuries.

- Do not clean the following materials:
 - dangerous dust
 - hot materials, for example burning cigarettes and hot ash.
 - flammable, explosive, aggressive liquids, for example gasoline, solvents, acids and alkalis.

- flammable, explosive dust, for example magnesium or aluminum dust.

Spare parts and accessories



CAUTION: Only use spare parts and accessories for the safety of the product.

- Use only spare parts and accessories from Husqvarna.
- Use only the brushes supplied with the product or referred to in the operator's manual.

Explosive or flammable atmosphere



CAUTION: Do not use the product in explosive or flammable atmospheres. Do not use the product near liquids, gas or fume that can cause flammable atmospheres.

Blower function



WARNING: Dust can cause health problems. The product has a blower function. Do not blow the outgoing air randomly in closed areas. Use the blower function only with a clean hose.

Safety instructions for maintenance



WARNING: Read all warning instructions that follow before you do maintenance on the product.

To empty the dirt container



CAUTION: Cleaned material can be dangerous to the environment. Discard the dirt referring to legal regulations.

Assembly



WARNING: Read and understand the safety chapter before you assemble the product.

To do before installation

1. Unlock the clasps and lift off the motor unit. (Fig. 8)
2. Remove the accessories from the dirt container. (Fig. 9)
3. Make sure that all parts are included. See the product overview. Necessary tools: Screwdriver.

To install the filter bag

1. Put the main switch to the "0" position.
2. Disconnect the product. (Fig. 10)
3. Unlock the clasps and lift off the motor unit. (Fig. 8)
4. Put the filter bag in the dirt container.
5. Attach the cardboard part of the filter bag on the vacuum inlet. Make sure that the rubber membrane is passing past the heightening of the vacuum inlet. (Fig. 11)
6. Put the motor unit on the dirt container and lock the clasps. (Fig. 12)

To attach the accessories

1. Put the accessories in their position for easy access. (Fig. 13)
2. Attach the tool box at the rear of the product. (Fig. 14)
3. Attach the holder for the the cable and the hose at the rear of the product. (Fig. 15)

To install the hose

1. Put the hose in the vacuum inlet on the front of the product. (Fig. 16)
2. Connect the appliance into the mains.
3. Put the main switch to the "I" position. (Fig. 17)
4. Adjust the suction power on the handle or by the main switch*. *Only on some models. (Fig. 18)

To install the tube holder

1. Move the tube holder vertically on the extension tube.
2. Use a screwdriver to install the tube holder on correct height of the extension tube. (Fig. 19)
3. Park the extension tube at the holders on the rear of the product. (Fig. 20)

Operation

Introduction



WARNING: Before you operate the product, you must read and understand the safety chapter.

To start the product

Before the product is used, make sure that the frequency and voltage shown on the rating plate is the same as the mains voltage.

1. Make sure that the main switch is in position "0". (Fig. 10)
2. Do a check that correct filters are in position in the product.
3. Put the hose into the vacuum inlet at the front of the product. Push the hose forward until it is installed tightly in position in the vacuum inlet. (Fig. 16)
4. Connect the two extension tubes with the handle. Twist the extension tubes to make sure that they are correctly in position.
5. Attach a nozzle to the extension tube. Select the nozzle after the type of material that is to be cleaned.
6. Connect the plug into the mains.
7. Put the main switch into position "I" to start the product. (Fig. 17)
2. Disconnect the handle from the hose. Press the hatches on the hose end (A) and pull out the handle (B). (Fig. 24)
3. Connect the power tool adaptor. (Fig. 25)
4. Adjust the suction power on the power tool adaptor or by the main switch*. *Only on some models. (Fig. 26)
5. Connect the hose to the vacuum inlet of the product and to the power tool. Connect the cable of the power tool to the electrical connection of the product. (Fig. 27)
6. Make sure that the switch on the power tool is in position "0". (Fig. 23)
7. Turn the main switch on the product to the power tool position (A).
8. Put the switch of the power tool to "I" (B). (Fig. 28)

To stop the product

1. Put the main switch into position "0" to stop the product.
2. Disconnect the plug from the mains. (Fig. 10)

To use the blow function

1. Put the hose in the opening on the rear of the product. (Fig. 21)
2. Connect the plug into the mains.
3. Put the main switch to the "I" position. (Fig. 17)
4. Adjust the blow power on the handle or by the main switch*. *Only on some models. (Fig. 22)

To use the power tool socket*

*Only on some models.



CAUTION: Follow the operating instructions and safety instructions for appliances connected to the power tool socket.

Note: The maximum power consumption of the connected tool is told in section *Technical data on page 16*.

1. Make sure that the switch on the power tool is in position "0". (Fig. 23)

Note: You can start and stop the product with the main switch on the product (A) or on the power tool (B).

To clean liquid

Note: The product has a float system that stops the airflow through the product at the maximum liquid level.



CAUTION: Do not clean liquid without the float system in position.

1. Make sure that the filter and the filter tension (the float system) is in position, see *To replace the filter on page 14*. Remove the filter bag if it is installed.
2. Use the floor nozzle to clean liquid.
3. At the maximum liquid level, a noticeable change of the motor sound is heard. The suction power decreases.
4. Stop the product, see *To stop the product on page 13*.
5. Empty the dirt container, see *To empty the dirt container after liquid pick up on page 14*.

Maintenance

Introduction



WARNING: Before you do maintenance, you must read and understand the safety chapter.

For all servicing and repair work on the product, special training is necessary. We guarantee the availability of

professional repairs and servicing. If your dealer is not a service agent, speak to them for information about the nearest service agent.

For more detailed information, refer to .

Regular service and inspection

- Regular service and inspection of the product must be done by qualified personnel referring to related legislation and regulations.
- Electrical tests for ground continuity, insulation resistance, and condition of the flexible cord must be done frequently.
- If a defect is found, the product **must** be removed from service and repaired by an approved service technician.

Maintenance of Dust Class L products

The following applies for Dust Class L products, WDC 325L.

- During maintenance and cleaning, use the product safely for maintenance personnel or other persons.
- In the maintenance area:
 - Use filtered mandatory airflow.
 - Use protective clothing.
 - Clean the maintenance area so that no harmful material get out in other areas.
- If the parts can not be cleaned satisfactorily during maintenance and repair:
 - Put the parts in correctly sealed bags.
 - Discard the parts referring to legal regulations.

To empty the dirt container after liquid pick up

1. Stop the product, see *To stop the product on page 13*.
2. Disconnect the hose from the vacuum inlet by pulling out the hose.
3. Unlock the clasps and lift off the motor unit. (Fig. 8)
4. Empty the dirt container by tilting it rearward and put the liquids into a floor drain. * Handle only on some models. (Fig. 29)



CAUTION: Always empty and clean the dirt container and the float system after liquid pick up. Do not pick up liquid without the float system and filter installed in the product.

5. Put the motor unit on the dirt container and lock the clasps. (Fig. 12)

To empty the dirt container after dry pick up

1. Stop the product, see *To stop the product on page 13*.
2. Unlock the clasps and lift off the motor unit. (Fig. 8)
3. Do a check to see if the filter bag is full.
4. Remove the filter bag if it is full.



CAUTION: Do not pick up dry material without the filter and the filter bag in position.

5. Install a new filter bag, see *To install the filter bag on page 12*.

Note: The suction efficiency of the product depends on the dimension and quality of the filter and the filter bag. Use only Husqvarna filter and filter bags.

6. Put the motor unit on the dirt container and lock the clasps. (Fig. 12)

To clean the filter, filter cleaning system

The product has a semi-automatic filter cleaning system. Use the filter cleaning system regularly, at the latest when the cleaning performance is no longer sufficient. Regular use of the filter cleaning system increases the life of the filter.

1. Clean the filter when the suction power is no longer sufficient. (Fig. 30)
2. Put the hose in the vacuum inlet on the front of the product. (Fig. 16)
3. Connect the appliance into the mains.
4. Put the main switch to the "I" position. (Fig. 17)
5. Put the handle in your hand (A) to make suction into your hand.
6. Beat the filter cleaning button 3 times with your fist (B). (Fig. 31)
7. If the suction power is not sufficient, remove the filter, see *To replace the filter on page 14*.
8. Shake, brush or wash the filter to clean it.
9. Let the filter dry.
10. Install the filter, see *To install the filter bag on page 12*.

To clean the product externally

1. Stop the product, see *To stop the product on page 13*.
2. Clean the product with a dry cloth, and a small quantity of spray polish.

To replace the filter

The product is designed for continuous heavy work. Depending on the number of running hours, the dust filter should be replaced.

1. Stop the product, see *To stop the product on page 13*.
2. Unlock the clasps and lift off the motor unit. (Fig. 8)
3. Rotate the filter tension (A) counter clockwise and pull it out. Pull out the filter (B). (Fig. 32)

4. Install the new filter (A). Install the filter tension (B) and rotate it clockwise. (Fig. 33)
5. Make sure that the filter and the filter tension is in position. (Fig. 34)
6. Put the motor unit on the dirt container and lock the clasps. (Fig. 12)

To replace the filter bag

1. Stop the product, see *To stop the product on page 13*.
 2. Unlock the clasps and lift off the motor unit. (Fig. 8)
 3. Do a check to see if the filter bag is full. Remove the filter bag if it is full.
4. Pull the cardboard part of the old filter bag from the vacuum inlet.
 5. Lift the filter bag (A) and discard it.
 6. Put the new filter bag in the dirt container (B).
 7. Attach the cardboard part of the filter bag on the vacuum inlet (C). Make sure that the rubber membrane is passing past the heightening of the vacuum inlet. (Fig. 35)
 8. Put the motor unit on the dirt container and lock the clasps. (Fig. 12)

Transportation, storage and disposal

Transportation and storage

- After use:
 - Disconnect the plug from the mains when the product is not in operation.
 - Wind up the cord starting from the product.
 - Use the cable holder to attach the cord on the motor unit.
 - Wind up the hose.
 - Use the hose holder to attach the hose on the motor unit.
- Transport:
 - Close all clasps on the motor unit.
 - Do not tilt the product if there is liquid in the dirt container.
 - Do not use a crane hook to lift the product.
- Storage:
 - Keep the product in a dry and frost free area.

To recycle the product

Follow these steps to make the product unusable.

1. Disconnect the plug from the mains.
2. Cut the power cord.
3. Do not discard the product in usual domestic waste.

Disposal (in accordance with 2012/19/EC):

The product must not be added to normal household waste. It must be disposed of in line with local environmental regulations.

Make sure that the product is discarded through or via your municipal recycling collection centre.

(Fig. 5)

Technical data

Technical data

	EU/CH		GB		AU/NZ		US
	WDC 220	WDC 325L	WDC 220	WDC 325L	WDC 220	WDC 325L	WDC 225
Voltage, V	220-240	220-240	220-240	220-240	220-240	220-240	110-120
Power P_{rec} , W	1000	1200	1000	1000	1000	1000	1000
Connected load for appliance socket, W	-	2400 /1100	-	1900	-	1300	-
Frequency, Hz	50/60				50-60		50/60
Fusing, A	10	16/10	13	13	10	10	15
Protection category (moist, dust)	IPX4						
Protection class (electrical)	II (Fig. 4)	I	II (Fig. 4)	I	II (Fig. 4)	I	II (Fig. 4)
Air volume flow, l/min	3600	3700	3600	3600	3600	3600	3200
Air volume flow, cfm	127	130	127	127	127	127	113
Vacuum, mbar	210	235	210	210	210	210	210
Sound pressure level at 1 m, EN 60704-1, dB(A) +/- 2	72						
Vibration ISO 5349, m/s^2 +/- 1	<1,5						
Weight, kg	7,5	8,5	7,5	8,5	7,5	8,5	7,5
Width, mm	377	376	377	376	377	376	377
Depth, mm	385	392	385	392	385	392	392
Height, mm	506	533	506	530	506	530	550

Declaration of Conformity

EU Declaration of Conformity

We, Husqvarna, SE-561 82 Huskvarna, Sweden, tel:
+46-36-146500, declare on our sole responsibility that
the product:

Description	Pressure washer
Brand	Husqvarna
Type / Model	WDC 220, WDC 325L
Identification	Serial numbers dating from 2023 and onwards

complies fully with the following EU directives and
regulations:

Regulation	Description
2011/65/EU	"on the restriction of the use of certain hazardous substances in electrical and electronic equipment"
2006/42/EC	"relating to machinery"
2014/30/EU	"relating to electromagnetic compatibility"

and that the following standards and/or
technical specifications are applied: EN
60335-1:2012/A11:2014/A13:2017/A15:2021, EN
60335-2-69:2012, EN 55014-1:2017/A11:2020, EN
55014-2:1997+A1:2001+A2:2008, EN 61000-3-2 :2014,
EN 61000-3-3:2013, EN IEC 63000:2018.

For information relating to noise emissions, refer to
Technical data on page 16.

Huskvarna, 2024-02-14



Claes Losdal, Development Manager/Garden Products,
Husqvarna

Responsible for technical documentation



UK Declaration of Conformity

We, Husqvarna, SE-561 82 Huskvarna, Sweden, tel: +46-36-146500, declare on our sole responsibility that the product:

Description	Pressure washer
Brand	Husqvarna
Type / Model	WDC 220, WDC 325L
Identification	Serial numbers dating from 2023 and onwards

complies fully with the following UK regulations:

Description
The Restriction of the Use of Certain Hazardous Substances in Electrical and Electronic Equipment Regulations 2012
The Supply of Machinery (Safety) Regulations 2008
Electromagnetic Compatibility Regulations 2016

and that the following standards and/or technical specifications are applied: EN 60335-1:2012/A11:2014/A13:2017/A15:2021, EN 60335-2-69:2012, EN 55014-1:2017/A11:2020, EN 55014-2:1997+A1:2001+A2:2008, EN 61000-3-2 :2014, EN 61000-3-3:2013, EN IEC 63000:2018.

For information relating to noise emissions, refer to *Technical data on page 16*.

Huskvarna, 2024-01-19



Claes Losdal, Development Manager/Garden Products,
Husqvarna

Responsible for technical documentation

**UK
CA**

UK Importer:
Husqvarna UK Ltd
Preston Road, Co. Durham
DL5 6UP