

HONDA

HHC36BxB

Cordless Chainsaw

Tronçonneuse sans fil

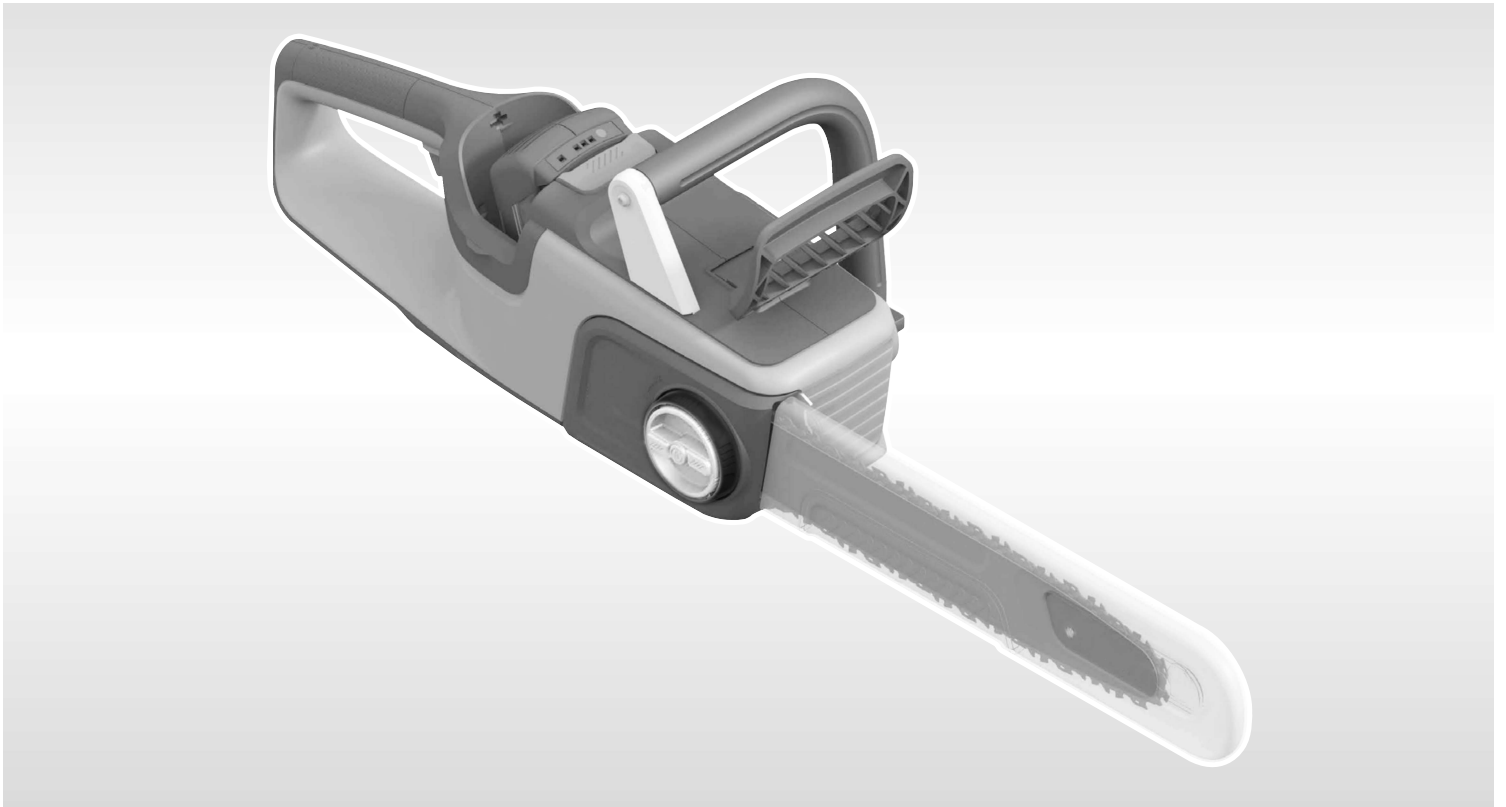
Akku-Kettensäge

Motosega cordless

Draadloze kettingzaag

Sladdlös motorsåg

Akumulátorová reťazová píla



Owner's Manual (Original Instructions)

Manuel d'utilisation (Instructions d'origine)

Betriebsanleitung (Originalanleitung)

Manuale utente (Istruzioni originali)

Instructieboekje (vertaling van oorspronkelijke instructieboekje)

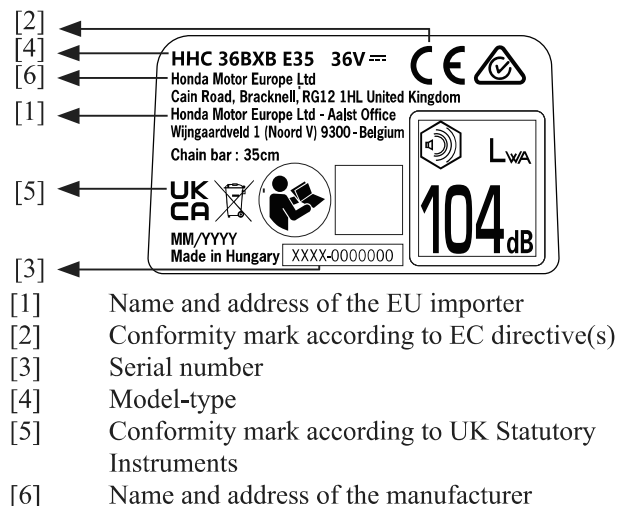
Instruktionsbok (originalinstruktioner)

Návod na použitie (pôvodné pokyny)

GB	English Owner's Manual (Original Instructions)	1
FR	Français Manuel d'utilisation (Instructions d'origine)	11
DE	Deutsch Übersetzung der Betriebsanleitung (Originalanleitung)	21
IT	Italiano Manuale utente (Istruzioni originali)	31
NL	Nederlands Instructieboekje (vertaling van oorspronkelijke instructieboekje)	41
SV	Svenska Instruktionsbok (originalinstruktioner)	51
SK	Slovensky Návod na použitie (pôvodné pokyny)	61

English

Identification of Machine



For clarification of all other safety warnings and symbols, please refer to the appropriate sections within the owner's manual.

Safety Notes

Explanation of symbols



Read instruction manual.



General hazard safety alert.



Do not expose to rain.



Always hold a chainsaw firmly with both hands.



Pay attention to the kickback of the chainsaw and avoid contact with the tip of the chain bar.



Wear eye, ear and head protection.



WARNING: Disconnect battery before maintenance.

General Power Tool Safety Warnings

⚠ WARNING Read all safety warnings, instructions, illustrations and specifications provided with this power tool. Failure to follow all instructions listed below may result in electric shock, fire and/or serious injury.

Save all warnings and instructions for future reference. The term “power tool” in the warnings refers to your battery-operated (cordless) power tool.

Work area safety

- ▶ **Keep work area clean and well lit.** Cluttered or dark areas invite accidents.
- ▶ **Do not operate power tools in explosive atmospheres, such as in the presence of flammable liquids, gases or dust.** Power tools create sparks which may ignite the dust or fumes.
- ▶ **Keep children and bystanders away while operating a power tool.** Distractions can cause you to lose control.

Electrical safety

- ▶ **Power tool plugs must match the outlet. Never modify the plug in any way. Do not use any adapter plugs with earthed (grounded) power tools.** Unmodified plugs and matching outlets will reduce risk of electric shock.
- ▶ **Avoid body contact with earthed or grounded surfaces, such as pipes, radiators, ranges and refrigerators.** There is an increased risk of electric shock if your body is earthed or grounded.
- ▶ **Do not expose power tools to rain or wet conditions.** Water entering a power tool will increase the risk of electric shock.
- ▶ **Do not abuse the cord. Never use the cord for carrying, pulling or unplugging the power tool. Keep cord away from heat, oil, sharp edges or moving parts.** Damaged or entangled cords increase the risk of electric shock.
- ▶ **When operating a power tool outdoors, use an extension cord suitable for outdoor use.** Use of a cord suitable for outdoor use reduces the risk of electric shock.
- ▶ **If operating a power tool in a damp location is unavoidable, use a residual current device (RCD) protected supply.** Use of an RCD reduces the risk of electric shock.

Personal safety

- ▶ **Stay alert, watch what you are doing and use common sense when operating a power tool. Do not use a power tool while you are tired or under the influence of drugs, alcohol or medication.** A moment of inattention while operating power tools may result in serious personal injury.
- ▶ **Use personal protective equipment. Always wear eye protection.** Protective equipment such as a dust mask, non-skid safety shoes, hard hat or hearing protection used for appropriate conditions will reduce personal injuries.
- ▶ **Prevent unintentional starting. Ensure the switch is in the off-position before connecting to power source and/or battery pack, picking up or carrying the tool.** Carrying power tools with your finger on the switch or energising power tools that have the switch on invites accidents.

- ▶ **Remove any adjusting key or wrench before turning the power tool on.** A wrench or a key left attached to a rotating part of the power tool may result in personal injury.
- ▶ **Do not overreach. Keep proper footing and balance at all times.** This enables better control of the power tool in unexpected situations.
- ▶ **Dress properly. Do not wear loose clothing or jewellery. Keep your hair and clothing away from moving parts.** Loose clothes, jewellery or long hair can be caught in moving parts.
- ▶ **If devices are provided for the connection of dust extraction and collection facilities, ensure these are connected and properly used.** Use of dust collection can reduce dust-related hazards.
- ▶ **Do not let familiarity gained from frequent use of tools allow you to become complacent and ignore tool safety principles.** A careless action can cause severe injury within a fraction of a second.

Power tool use and care

- ▶ **Do not force the power tool. Use the correct power tool for your application.** The correct power tool will do the job better and safer at the rate for which it was designed.
- ▶ **Do not use the power tool if the switch does not turn it on and off.** Any power tool that cannot be controlled with the switch is dangerous and must be repaired.
- ▶ **Disconnect the plug from the power source and/or remove the battery pack, if detachable, from the power tool before making any adjustments, changing accessories, or storing power tools.** Such preventive safety measures reduce the risk of starting the power tool accidentally.
- ▶ **Store idle power tools out of the reach of children and do not allow persons unfamiliar with the power tool or these instructions to operate the power tool.** Power tools are dangerous in the hands of untrained users.
- ▶ **Maintain power tools and accessories. Check for misalignment or binding of moving parts, breakage of parts and any other condition that may affect the power tool's operation. If damaged, have the power tool repaired before use.** Many accidents are caused by poorly maintained power tools.
- ▶ **Keep cutting tools sharp and clean.** Properly maintained cutting tools with sharp cutting edges are less likely to bind and are easier to control.
- ▶ **Use the power tool, accessories and tool bits etc. in accordance with these instructions, taking into account the working conditions and the work to be performed.** Use of the power tool for operations different from those intended could result in a hazardous situation.
- ▶ **Keep handles and grasping surfaces dry, clean and free from oil and grease.** Slippery handles and grasping surfaces do not allow for safe handling and control of the tool in unexpected situations.

Battery tool use and care

- ▶ **Recharge only with the charger specified by the manufacturer.** A charger that is suitable for one type of battery pack may create a risk of fire when used with another battery pack.
- ▶ **Use power tools only with specifically designated battery packs.** Use of any other battery packs may create a risk of injury and fire.
- ▶ **When battery pack is not in use, keep it away from other metal objects, like paper clips, coins, keys, nails, screws or other small metal objects, that can make a connection from one terminal to another.** Shorting the battery terminals together may cause burns or a fire.
- ▶ **Under abusive conditions, liquid may be ejected from the battery; avoid contact. If contact accidentally occurs, flush with water. If liquid contacts eyes, additionally seek medical help.** Liquid ejected from the battery may cause irritation or burns.
- ▶ **Do not use a battery pack or tool that is damaged or modified.** Damaged or modified batteries may exhibit unpredictable behaviour resulting in fire, explosion or risk of injury.
- ▶ **Do not expose a battery pack or tool to fire or excessive temperature.** Exposure to fire or temperature above 130°C may cause explosion.
- ▶ **Follow all charging instructions and do not charge the battery pack or tool outside the temperature range specified in the instructions.** Charging improperly or at temperatures outside the specified range may damage the battery and increase the risk of fire.

Service

- ▶ **Have your power tool serviced by a qualified repair person using only identical replacement parts.** This will ensure that the safety of the power tool is maintained.
- ▶ **Never service damaged battery packs.** Service of battery packs should only be performed by the manufacturer or authorized service providers.

General Chainsaw Safety Warnings

- ▶ **Keep all parts of the body away from the saw chain when the chainsaw is operating. Before you start the chainsaw, make sure the saw chain is not contacting anything.** A moment of inattention while operating chainsaws may cause entanglement of your clothing or body with the saw chain.
- ▶ **Always hold the chainsaw with your right hand on the rear handle and your left hand on the front handle.** Holding the chainsaw with a reversed hand configuration increases the risk of personal injury and should never be done.
- ▶ **Hold the chainsaw by insulated gripping surfaces only, because the saw chain may contact hidden wiring.** Saw chains contacting a “live” wire may make exposed metal parts of the chainsaw “live” and could give the operator an electric shock.

- ▶ **Wear eye protection. Further protective equipment for hearing, head, hands, legs and feet is recommended.** Adequate protective equipment will reduce personal injury from flying debris or accidental contact with the saw chain.
- ▶ **Do not operate a chainsaw in a tree, on a ladder, from a rooftop, or any unstable support.** Operation of a chainsaw in this manner could result in serious personal injury.
- ▶ **Always keep proper footing and operate the chainsaw only when standing on fixed, secure and level surface.** Slippery or unstable surfaces may cause a loss of balance or control of the chainsaw.
- ▶ **When cutting a limb that is under tension be alert for spring back.** When the tension in the wood fibres is released the spring loaded limb may strike the operator and/or throw the chainsaw out of control.
- ▶ **Use extreme caution when cutting brush and saplings.** The slender material may catch the saw chain and be whipped toward you or pull you off balance.
- ▶ **Carry the chainsaw by the front handle with the chainsaw switched off and away from your body. When transporting or storing the chainsaw, always fit the guide bar cover.** Proper handling of the chainsaw will reduce the likelihood of accidental contact with the moving saw chain.
- ▶ **Follow instructions for lubricating, chain tensioning and changing the bar and chain.** Improperly tensioned or lubricated chain may either break or increase the chance for kickback.
- ▶ **Cut wood only. Do not use chainsaw for purposes not intended. For example: do not use chainsaw for cutting metal, plastic, masonry or non-wood building materials.** Use of the chainsaw for operations different than intended could result in a hazardous situation.
- ▶ **This chainsaw is not intended for tree felling.** Use of the chainsaw for operations different than intended could result in serious injury to the operator or bystanders.
- ▶ **Follow all instructions when clearing jammed material, storing or servicing the chainsaw. Make sure the switch is off and the battery pack is removed.** Unexpected actuation of the chainsaw while clearing jammed material or servicing may result in serious personal injury.
- ▶ **Causes and operator prevention of kickback:**
 - Kickback may occur when the nose or tip of the guide bar touches an object, or when the wood closes in and pinches the saw chain in the cut.
 - Tip contact in some cases may cause a sudden reverse reaction, kicking the guide bar up and back towards the operator.
 - Pinching the saw chain along the top of the guide bar may push the guide bar rapidly back towards the operator.
 - Either of these reactions may cause you to lose control of the saw which could result in serious

personal injury. Do not rely exclusively upon the safety devices built into your saw. As a chainsaw user, you should take several steps to keep your cutting jobs free from accident or injury.

Kickback is the result of chainsaw misuse and/or incorrect operating procedures or conditions and can be avoided by taking proper precautions as given below:

- ▶ **Maintain a firm grip, with thumbs and fingers encircling the chainsaw handles, with both hands on the saw and position your body and arm to allow you to resist kickback forces.** Kickback forces can be controlled by the operator, if proper precautions are taken. Do not let go of the chainsaw.
- ▶ **Do not overreach and do not cut above shoulder height.** This helps prevent unintended tip contact and enables better control of the chainsaw in unexpected situations.
- ▶ **Only use replacement guide bars and saw chains specified by the manufacturer.** Incorrect replacement guide bars and saw chains may cause chain breakage and/or kickback.
- ▶ **Follow the manufacturer's sharpening and maintenance instructions for the saw chain.** Decreasing the depth gauge height can lead to increased kickback.

Additional safety warnings

- ▶ **This appliance is not intended for use by persons (including children) with reduced physical, sensory or mental capabilities, or lack of experience and knowledge, unless they have been given supervision or instruction concerning use of the appliance by a person responsible for their safety.** Children should be supervised to ensure that they do not play with the appliance.
- ▶ **When working with the tool, always hold it firmly with both hands and provide for a secure stance.** The power tool is guided more securely with both hands.
- ▶ **Always ensure all handles and guards are fitted when using the machine.** Never attempt to use an incomplete machine or one fitted with an unauthorized modification.
- ▶ Always operate the power tool with a properly aligned and tensioned chain. Using the power tool with a misaligned or incorrectly tensioned chain can result in chain breakage, kickback and/or injury.
- ▶ Always make sure that the chain is in the correct position. An incorrectly positioned chain can result in chain breakage, kickback and/or injury.

Safety Instructions and Recommendations for Optimal Handling of the Battery

- ▶ **Ensure the product is switched off before inserting the battery.** Inserting the battery into a product that has the switch on can cause accidents.
- ▶ **Use only Honda batteries intended specifically for this product.** Use of any other batteries may create a risk of injury and fire.

- ▶ **Do not open the battery.** There is a risk of short-circuiting.



Protect the battery against heat (e.g. against continuous intense sunlight), fire, water and moisture. There is a risk of explosion.



- ▶ **When not using the machine, keep the battery not in use away from paper clips, coins, keys, nails, screws or other small metal objects that could cause bridging of the terminals.** Shorting the battery terminals together may cause burns or a fire.
- ▶ **In case of damage and improper use of the battery pack, vapours may be emitted.** Ventilate the area and seek medical help in case of complaints. The vapours can irritate the respiratory system.
- ▶ **Only use the battery with products from the manufacturer.** This is the only way in which you can protect the battery against dangerous overload.
- ▶ **The battery can be damaged by pointed objects such as nails or screwdrivers or by force applied externally.** An internal short circuit may occur, causing the battery to burn, smoke, explode or overheat.
- ▶ **Do not short-circuit the battery.** There is a risk of explosion.
- ▶ Protect the battery against moisture and water.
- ▶ Store the product and battery only within a temperature range between -20°C and 50°C. As an example, do not leave the battery in the car in summer.
- ▶ Occasionally clean the venting slots of the battery using a soft, clean and dry brush.

Symbols

The following symbols are important for reading and understanding the original instructions. Please take note of the symbols and their meaning. The correct interpretation of the symbols will help you to use the product in a better and safer manner.

Symbol	Meaning
	Keep children, bystanders and pets away.
	Movement direction
	Reaction direction
	Weight
	Switching on

Symbol	Meaning
	Switching off
	Permitted action
	Prohibited action
CLICK!	Audible noise
	Accessories/Spare parts
STOP	stop

Product description and specifications



Read all safety warnings and all instructions. Failure to follow the safety warnings and instructions may result in electric shock, fire and/or serious injury.

Please observe the illustrations at the end of this operating manual.

Intended Use

The power tool is used for sawing trees and tree trunks near the ground. Cuts can be sawed with or across the grain.

This power tool is not suitable for sawing mineral materials. This power tool is not intended for felling trees.

Product Features (see figure A)

The numbering of the product features refers to the diagram of the power tool on the graphics page.

- (1) Rear handle
- (2) On/Off switch
- (3) Drive sprocket
- (4) Front handle
- (5) Hand guard/Activation lever for kickback brake
- (6) Serial number
- (7) Oil outlet
- (8) Guide pin for chain bar
- (9) Fastening bolt
- (10) Metal spiked bumper
- (11) Symbol for rotation and cutting direction
- (12) Chain bar
- (13) Saw chain
- (14) Affixed tensioning wheel
- (15) Chain-tensioning ring
- (16) Clamping knob
- (17) Cover
- (18) Chain guard

- (19) Oil filler cap
- (20) Lock-off button for On/Off switch
- (21) Battery
- (22) Battery unlocking button

- (23) Battery charge-control indicator
- (24) Charger
- (25) Oil viewing window

Technical Data

Cordless chainsaw		Cordless Chainsaw HHC36BxB
Rated voltage	V	36
Chain speed (no-load)	m/s	14
Chain bar length	cm	35
Saw chain type		Oregon AdvanceCut
Saw chain pitch		3/8" low profile
Drive link thickness	mm	1.1 (0.043")
Amount of drive links		52
Max. cutting diameter	cm	31
Oil reservoir capacity	ml	150
Automatic chain oiler		•
Toolless chain tensioning (SDS)		•
Nose sprocket		•
Kickback brake		•
Run-down brake		•
Metal spiked bumper		•
Weight	kg	2.9
Serial number		See serial number (type plate) on the machine
Recommended ambient temperature during charging	°C	0... +35
Permitted ambient temperature during storage	°C	-20... +50
Battery type		36V 2.0 Ah, 4.0 Ah, 6.0 Ah

Noise/Vibration Information

Cordless Chainsaw HHC36BxB		
Noise emission values determined according to EN 62841-4-1 .		
Typically the A-weighted noise levels of the product are:		
– Sound pressure level	dB(A)	94
– Sound power level	dB(A)	102
– Uncertainty K	dB	3.0
Wear hearing protection!		
Vibrational values (vector sum of three directions) determined according to EN 62841-4-1 .		
– Vibration emission value a_h	m/s ²	5.0
– Uncertainty K	m/s ²	1.5
Noise emission value determined according to 2000/14/EC :		
– Guaranteed sound power level	dB(A)	104
– Uncertainty K	dB	4.0

That the declared vibration total value(s) and the declared noise emission value(s) have been measured in accordance with a standard test method and may be used for comparing one machine with another.

That the declared vibration total value(s) and the declared noise emission value(s) may also be used in a preliminary assessment of exposure.

That the vibration and noise emissions during actual use of the machine can differ from the declared total value depending on the ways in which the machine is used; and of the need to identify safety measures to protect the operator that are based on an estimation of exposure in the actual conditions of use (taking account of all parts of the operating cycle such as the times when the machine is switched off and when it is running idle in addition to the trigger time).

Assembly

For Your Safety

- ▶ **Warning! Switch off and remove battery from power tool before adjusting or cleaning.**
- ▶ **Caution! Do not touch the rotating chain.**
- ▶ **Do not operate the chainsaw near other people, children or animals. Do not operate the chainsaw after drinking alcohol or under the influence of intoxicating drugs or medication.**

Mounting and Tensioning the Saw Chain (see figures B1 – B4)

- ▶ **Do not use any tools for assembly.**
- ▶ **Check the chain tension regularly during use.**
Using the chainsaw with a misaligned or incorrectly tensioned chain can result in chain breakage, kickback and/or injury.
- ▶ **Upon initial operation, new chains can lengthen considerably.**
- ▶ **Avoid tensioning the chain if it is hot, as this will cause the chain to become overtensioned and fit too tightly against the chain bar when it cools down.**
- Place the chainsaw on any suitable flat surface.
- With the chain bar off the tool, make sure that the affixed tensioning wheel (14) on the chain bar has been fully rotated anticlockwise.
- Slide the saw chain (13) in the slot around the chain bar (12).
- Ensure the saw chain is in the correct running direction by comparing the saw chain with the rotation symbol (11).
- Fit the chain links around the drive sprocket (3) and mount the chain bar (12) onto the fastening bolt (9).
- Check if all parts are seated properly and hold the chain bar and the chain in this position.
- Then rotate the affixed tensioning wheel (14) clockwise until the chain is partly tensioned and will stay mounted to the chainsaw.
- Attach the cover (17) and rotate the clamping knob (16) clockwise until the cover is partly secured.
- Turn the chain-tensioning ring (15) clockwise until the correct chain tension is reached. When adjusting with the chain-tensioning ring (15), make sure to hold the clamping knob (16) to prevent it from turning and clamping too early.
- The saw chain (13) is correctly tensioned when it can be raised approx. 6–7mm from the chain bar in the centre. This should be done by using one hand to raise the saw chain against the weight of the machine.
- Once the correct tension is reached, hold the chain-tensioning ring (15) and rotate the clamping knob (16) clockwise until it is firmly secured.
- If the chain is tensioned too tightly, unscrew the clamping knob (16) and repeat the steps for tensioning.

- The locking mechanism of the clamping system prevents the chain from loosening. If the chain-tensioning ring (15) is hard to rotate, loosen the clamping knob (16) by turning it anticlockwise.

Saw Chain Lubrication (see figure C)

Note: The chainsaw is not supplied filled with oil. It is essential to fill with oil before use. Operating the chainsaw without chain oil or when the oil level is below the minimum mark will result in damage to the chainsaw.

Chain life and cutting capacity depend on optimum lubrication. Therefore, the chain is automatically lubricated with chain oil during operation via the oil outlet (7).

Filling the oil reservoir:

- Set the chainsaw on any suitable surface with the oil filler cap (19) facing upwards.
- Clean the area around the oil filler cap (19) with a cloth and unscrew the cap.
- Add biodegradable chainsaw oil until the oil level can be viewed through the oil tank opening (25). Take care when filling to avoid dirt or debris from entering the oil tank. Screw on oil filler cap (19) again and tighten fully.

Note: It is important to use only readily biodegradable chain lubricants (according to RAL-UZ 48) to avoid damage to the chainsaw. Never use recycled/old oil. Use of non-approved oil will invalidate the warranty.

Note: The oil filter is embedded inside the oil tank. Contact the Honda Authorised Dealer for cleaning or troubleshooting.

Note: It is strongly recommended to use Biodegradable chain oil. This can be seen in the accessories section.

Note: Oil becomes denser at lower temperatures which decreases the flow rate of oil.

Starting Operation

Inserting/removing the battery (see figure D)

Note: Using unsuitable batteries can lead to malfunctions or damage the machine.

Insert the charged battery (21). Make sure that the battery is fully fitted.

To remove the battery (21) from the machine, press the battery unlocking button (22) and pull the battery out.

Charging the Battery

- ▶ **Pay attention to the mains voltage.** The voltage of the power source must match the voltage specified on the rating plate of the charger.

The battery is equipped with temperature monitoring that allows charging only in the temperature range between 0°C and 35°C. In this manner, a high battery service life is achieved.

Note: The battery is supplied partially charged. To ensure full battery capacity, completely charge the

battery in the battery charger before using for the first time.

The lithium-ion battery can be charged at any time without reducing its service life. Interrupting the charging procedure does not cause damage to the battery.

The “Electronic Cell Protection (ECP)” protects the lithium-ion battery against deep discharging. When the battery is empty, the product is switched off by means of a protective circuit: The product no longer operates.

Do not continue to press the On/Off switch after an automatic shut-off of the product. The battery could become damaged.

Observe the notes for disposal of the battery.

Operation

- ▶ **Always read the operating and safety information before use.**
- ▶ **Always check the tool and chain condition, the oil level and correct assembly before use. Only use the chainsaw if it is in perfect condition.**
- ▶ **Always wear suitable clothing and personal protective equipment.**
- ▶ **Always make sure that the environment is dry and free from obstacles and persons not involved.**
- ▶ **Never use the chainsaw on a ladder or above shoulder height.**
- ▶ **Never over-reach or work with arms fully extended.**
- ▶ **Always hold the chainsaw firmly with both hands.**

The saw chain is automatically lubricated with chain oil during operation via the oil outlet (7).

The chainsaw is not supplied filled with oil.

Be sure to fill the chainsaw with chain oil before using it.

It is important to use only biodegradable chain lubricants (according to RAL-UZ 48) to avoid damage to the chainsaw.

Filling the oil reservoir: (see figure C)

- Set the chainsaw on any suitable surface with the oil filler cap (19) facing upwards.
- Clean the area around the oil filler cap (19) with a cloth and unscrew the cap.
- Add biodegradable chainsaw oil until the oil level can be viewed through the oil tank opening (25). You can check the oil level through the viewing window (25) during operation. When the minimum level is reached, top up with new oil.

Switching On and Off (see figure E1)

- ▶ **Pull the hand guard/activation lever for the kickback brake (5) from position ② to position ① towards the front handle (4). If the hand guard/activation lever for the kickback brake (5) has not been moved, then the kickback brake has not been deactivated before use and the chainsaw will not start.**

- ▶ **Always push the hand guard/activation lever for the kickback brake forwards to the deactivated position after each use.**

- Remove the chain guard (18).
- Hold the chainsaw as shown in figure E2.
- Pull the activation lever for the kickback brake (5) backwards to the front handle.
- To **start** the machine, **first** push the lock-off button for the On/Off switch (20) and **then** press the On/Off switch (2) and keep it pressed. When the machine is running, the lock-off button can be released again.
- To **switch off** the power tool, release the On/Off switch (2).
- The **kickback brake** is a safety mechanism activated by the wrist through the front hand guard (5) when kickback occurs. The chain stops immediately. This reduces the risk of kickback injury. Try to avoid kickback.
- Periodically push the activation lever for the kickback brake (5) forward during operation to test the function of the kickback brake. Stop operation immediately if the chainsaw does not stop immediately.

Note: Do not stop the chainsaw after sawing by actuating the kickback brake (5).

Checking the Lubrication (see figure E3)

- Tilt the chainsaw so that the chain bar is 20cm away from a sheet of paper lying on the ground.
- Switch on the chainsaw and let it run for approx. 1 minute until oil splashes can be seen on the sheet of paper to confirm that oil is being pulled through the automatic lubrication system.

Note: Operating the chainsaw without chain oil or when the oil level is below the minimum mark will result in damage to the chainsaw.

Note: Oil becomes denser at lower temperatures, which decreases the flow rate of oil.

Note: Saw chain life and cutting capacity depend on optimum lubrication.

General Behaviour (see figure F)

- First-time users should practise cutting logs on a saw horse.
- Hold the chainsaw at the right-hand side of your body.
- Use the metal spiked bumper (10) as a leverage point while cutting.
- The chain must be running at full speed before it makes contact with the wood.
- Reset the metal spiked bumper at a lower point when sawing thicker logs or tree trunks. For this, pull the chainsaw slightly backwards until the metal spiked bumper release, and reposition at a lower level to continue sawing. Do not remove the chainsaw completely out of the cut.
- Do not force the saw chain while cutting, let the chain do the work.
- Always remove the chainsaw from a wood cut while the saw chain is running.

- Beware when reaching the end of the cut. The weight of the chainsaw changes unexpectedly as it cuts free from the wood. Danger of injury to the legs and feet.

Kickback (see figure G)

- Kickback is the sudden backward/upward motion of the chainsaw, occurring when the chain (at the tip of the chain bar) comes in contact with a log or wood, or when the chain becomes jammed.
- When kickback occurs, the chainsaw reacts unpredictably and can cause heavy injuries to the operator or bystanders.
- Particular attention must be given when sawing sideways, slanted or during length cuts, as the metal spiked bumper (10) usually cannot be applied.

Cutting Logs (see figures H)

- Always secure the logs before cutting.

- Always cut the logs beyond the secured points to prevent the log from closing in and causing the chain to get jammed.
- Never allow the saw chain to make contact with the ground or cutting equipment.
- Be careful not to trip over tree stumps, branches, roots etc.

Cutting Wood under Tension (see figure I)

- Be extremely careful when sawing wood, branches or trees under tension. Leave saw jobs like these to trained professionals. There is a high risk of accidents.

Limbing a Branch or Tree (see figure J)

- Limbing is removing the small branches from a fallen tree or large branch.
- Leave larger lower limbs to support the log off the ground.
- Remove the smaller limbs in one cut.

Troubleshooting

The following chart lists problem symptoms, possible causes and corrective actions, if your power tool does not operate properly. If these do not identify and correct the problem, contact your service agent.

Warning: Switch off and remove the battery prior to any troubleshooting.

Problem	Possible Cause	Corrective Measure
Chainsaw fails to operate	Kickback brake is activated	see figure E1
	Battery discharged	Recharge battery; also see “Battery Charging”
	Battery not fully connected	Ensure both locking levels are engaged
	Motor protector has activated	Allow motor to cool
	Battery too hot/cold	Allow to cool/warm
	Power tool defective	Contact Honda Authorised dealer
Chainsaw operates intermittently	Battery discharged	Recharge battery; also see “Battery Charging”
	Power tool defective	Contact Honda Authorised dealer
Saw chain dry	No oil in reservoir	Refill oil
	Oil outlet (7) clogged	Clean oil outlet (7)
	Oil filter clogged	Clean oil filter / Contact Honda Authorised dealer
Saw chain/guide bar hot	No oil in reservoir	Refill oil
	Chain tension too high	Tension saw chain
	Dull saw chain	Replace saw chain
	Oil passage clogged	Contact Honda Authorised dealer
Chainsaw rips, vibrates, does not saw properly	Saw chain tension too loose	Adjust chain tension
	Dull saw chain	Replace saw chain
	Saw chain worn out	Replace saw chain
	Saw chain teeth are facing in the wrong direction	Reassemble with saw chain in correct direction
	Chain bar damaged or worn	Replace chain bar or contact Honda Authorised Dealer
Excessive vibrations/noise	Power tool defective	Contact Honda Authorised dealer

Problem	Possible Cause	Corrective Measure
Sawing time per battery charge too low	Too much friction, due to lack of lubricant	Ensure chain lubrication (see “Saw chain lubrication”)
	Saw chain needs cleaning	Clean saw chain
	Poor sawing technique	see “Working with the chainsaw”
	Battery not fully charged	Recharge battery; also see “Battery Charging”
	Battery out of the allowable temperature range	Allow battery to warm naturally to room temperature (within battery operating temperature 0–45°C)
	Chain tension too high	Tension saw chain
	Dull saw chain	Replace saw chain
The saw chain is running slow	Battery discharged	Recharge battery; also see “Battery Charging”
	Battery out of the allowable temperature range	Allow battery to warm naturally to room temperature (within battery operating temperature 0–45°C)
	Battery is too hot	Allow to cool

Battery and charger

Problem	Possible Cause	Corrective Measure
Flashing red battery charge indicator	Battery not (properly) inserted	Properly insert battery in charger
	Battery contacts contaminated	Clean the battery contacts (e.g. by inserting and removing the battery several times) or replace the battery
	Battery defective	Replace the battery
Battery charge indicators do not light up	Mains plug of battery charger not plugged in (properly)	Insert mains plug (fully) into the socket outlet
Battery will not charge	Socket outlet, mains cable or battery charger defective	Check the mains voltage; have the battery charger checked by a Honda Authorised Dealer for power products
	Battery and charger defective	Replace battery and charger
	Battery defective	Replace battery
	Charger defective	Replace charger

Maintenance and Service

Maintenance and Cleaning

- **Before any work on the garden product itself (e.g. maintenance, tool change etc.) as well as during transport and storage, remove the battery from the garden product.** There is danger of injury when unintentionally actuating the On/Off switch.
- Always fit the chain guard (18) on the chain bar (12) when the chainsaw is not being used to prevent injury.
- For safe and proper working, always keep the power tool and its ventilation slots clean.
- Do not use water, solvents or polishes.
- Clean the chain and chain bar before storing the product for an extended period of time to prevent the parts from seizing.
- Remove the SDS cover (17), chain bar (12) and saw chain (13) and clean these parts with a brush to remove oil, sap and dust residue, especially from the saw blade groove.

- Use a clean cloth to carefully remove debris from the oil outlet (7) and drive sprocket (3). Make sure that no debris enters the oil outlet (7), as this can cause blockages and lubrication problems.
- Carry out the required maintenance before use.
- Regularly check the chainsaw for obvious defects such as loose, dislodged or damaged saw chain and chain bar, loose fixings and worn or damaged components.
- Do not modify this product. Unauthorised modifications may impair the safety of your product and may result in increased noise and vibration.
- Always empty the oil reservoir before storage and refill it before use.
- Store the chainsaw in a secure, dry place, out of the reach of children.
- Do not place other objects on the chainsaw.

Replacing and Sharpening the Saw Chain

- The saw chain can become blunt through prolonged use or when coming into contact with objects other than wood.
- A sharp saw chain is required for optimum performance and safety.
- Never sharpen the saw chain yourself unless you have experience with it.
- Replace the saw chain with the Honda saw chain accessory or have the saw chain professionally resharpened.

Replacing the Chain Bar

► **Only replace the chain bar if you fully understand the product and the instructions, otherwise please contact the Honda Authorised Dealer.**

- If the chain bar is worn, you can mount it upside down to extend its life, or you can replace it.
- Use a hex key to loosen the screw between the chain bar (12) and the affixed tensioning wheel (14).
- Once you have flipped or replaced the chain bar, reattach the affixed tensioning wheel (14).

Note: Tighten by hand until you feel a slight resistance, then perform 1/8 turn for proper fastening. Overtightening can cause the chain bar to pinch and restrict the path of the rotating saw chain.

Chain bar

80035-Y0A-S00

After-Sales Service and Application Service

In the unlikely event that you encounter a problem with your product, please contact your Honda authorised service dealer.

Transport

The recommended lithium-ion batteries are subject to legislation on the transport of dangerous goods. The user can transport the batteries by road without further requirements.

When shipping by third parties (e.g. by air transport or forwarding agency), special requirements on packaging and labelling must be observed. For preparation of the item being shipped, consulting an expert for hazardous material is required.

Dispatch battery packs only when the housing is undamaged. Tape or mask off open contacts and pack up the battery in such a manner that it cannot move around in the packaging. Please also observe the possibility of more detailed national regulations.

Disposal



The product, batteries, accessories and packaging should be sorted for environmental-friendly recycling.



Do not dispose of the product and batteries/rechargeable batteries into household waste!

Only for EU countries:

According to the European Directive 2012/19/EU, products that are no longer usable, and according to the European Directive 2006/66/EC, defective or used battery packs/ batteries, must be collected separately and disposed of in an environmentally correct manner.

If disposed of incorrectly, waste electrical and electronic equipment may have harmful effects on the environment and human health, due to the potential presence of hazardous substances.

Battery packs/batteries:

Li-ion:

Please observe the notes in the section on transport (see “Transport”, page 10).

Only for United Kingdom:

According to The Waste Electrical and Electronic Equipment Regulations 2013 (SI 2013/3113) (as amended) and the Waste Batteries and Accumulators Regulations 2009 (SI 2009/890) (as amended), products that are no longer usable must be collected separately and disposed of in an environmentally friendly manner.

For Australia only:

Honda Australia is a member of the Battery Stewardship Council and recommends customers responsibly recycle their batteries via the Bcycle (<https://bcycle.com.au/>) battery recycling scheme.