



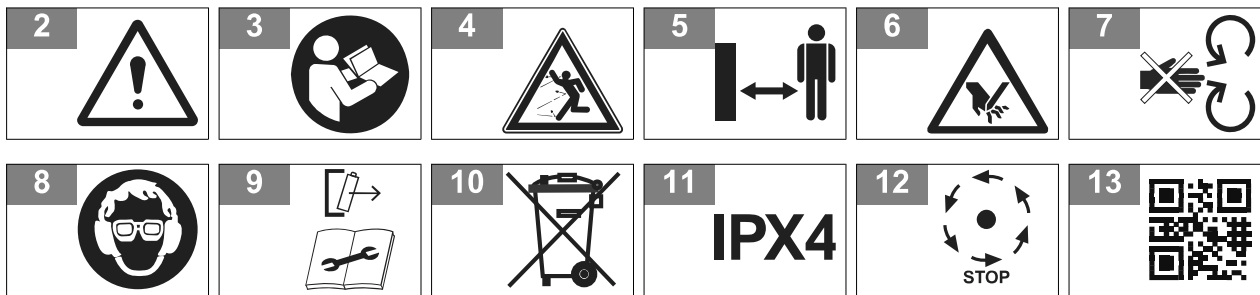
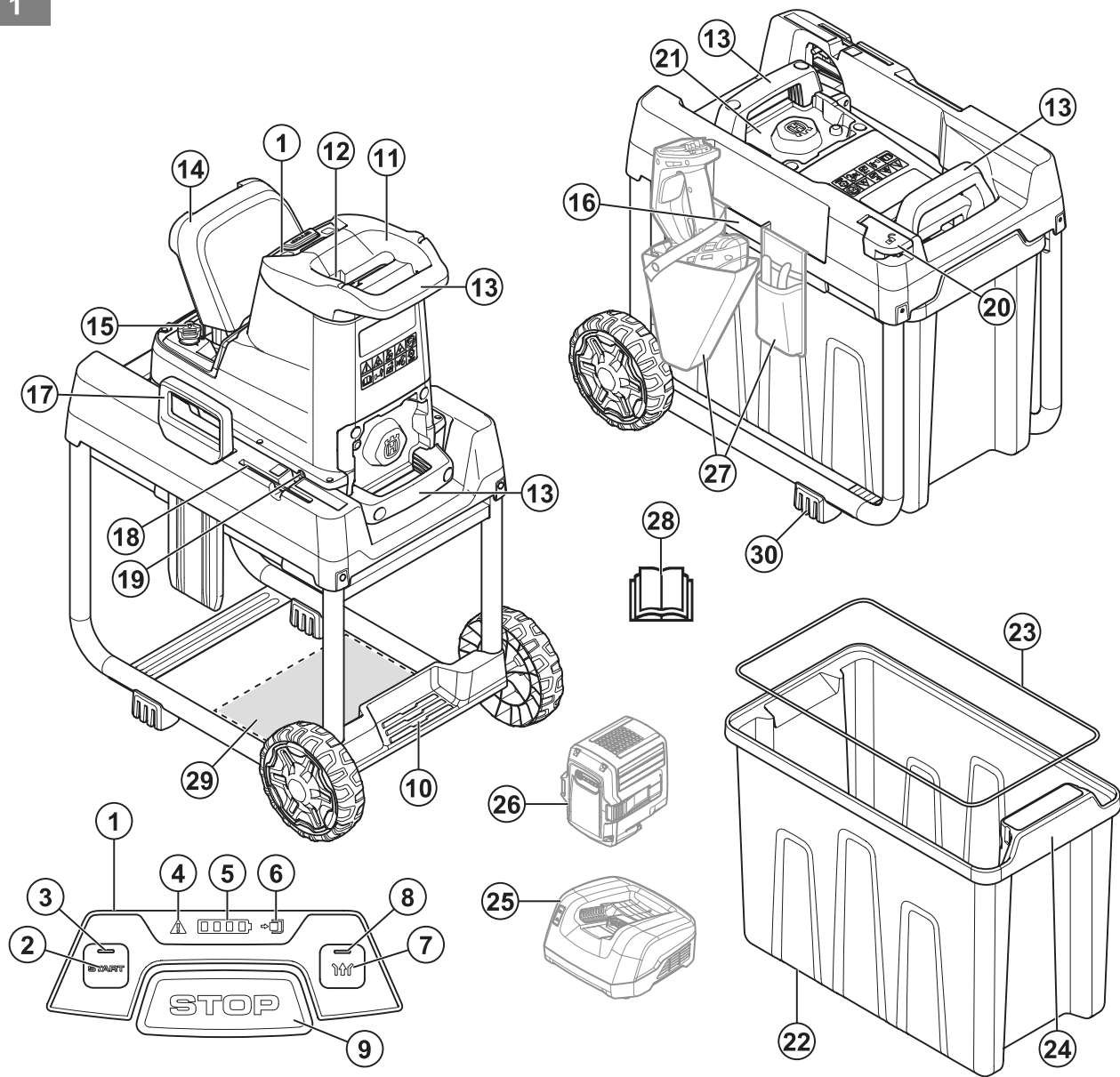
Husqvarna®



GS 340is

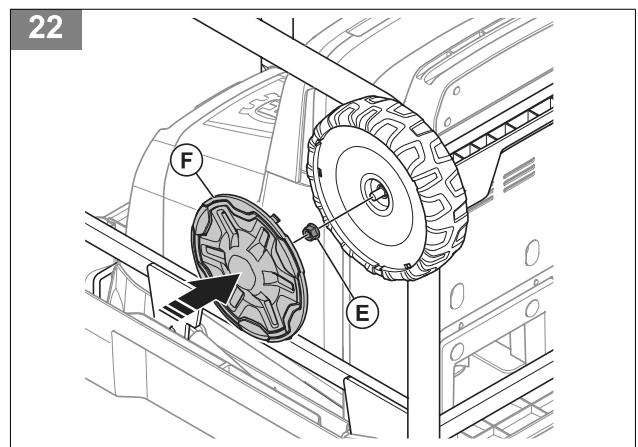
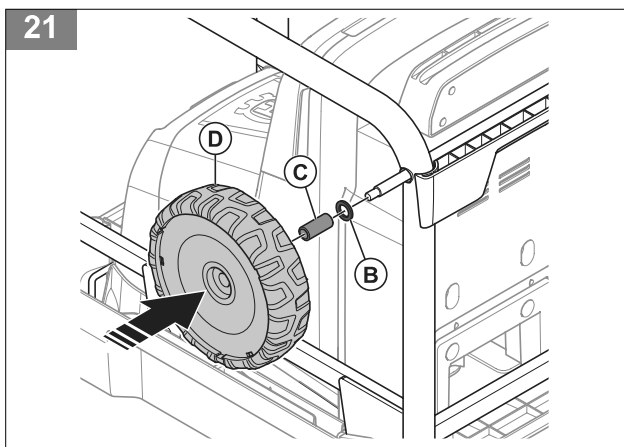
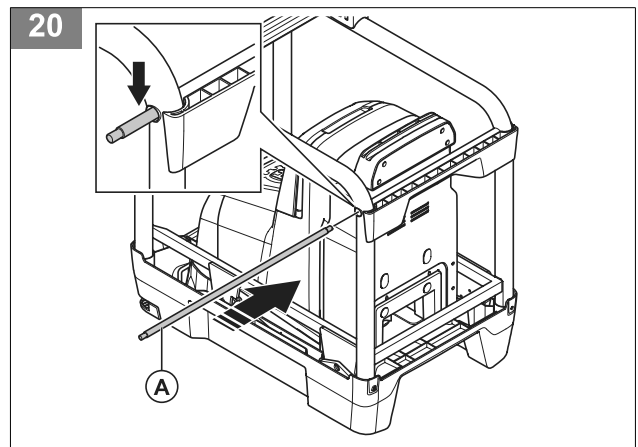
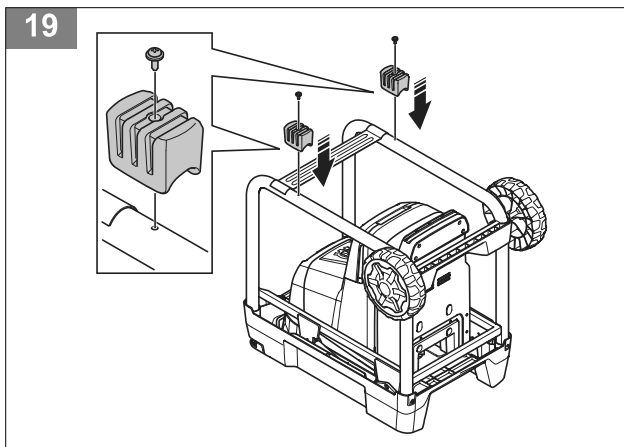
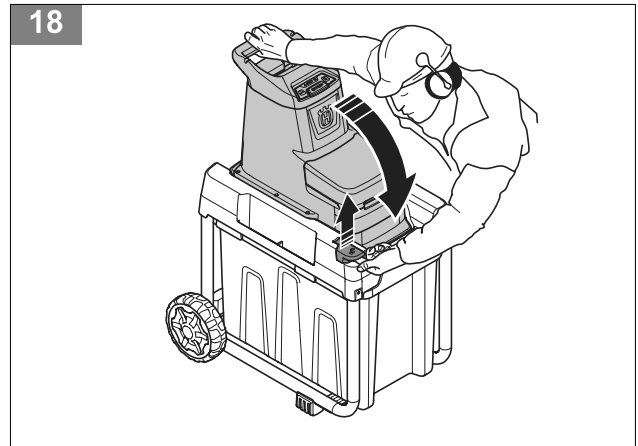
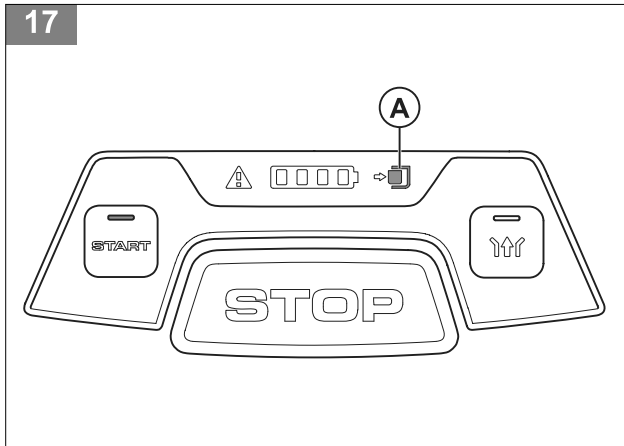
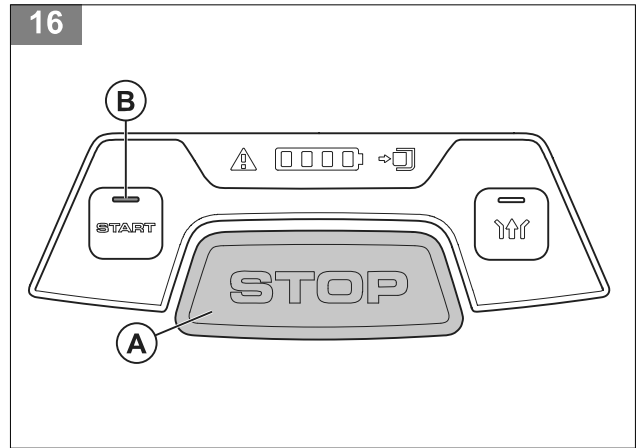
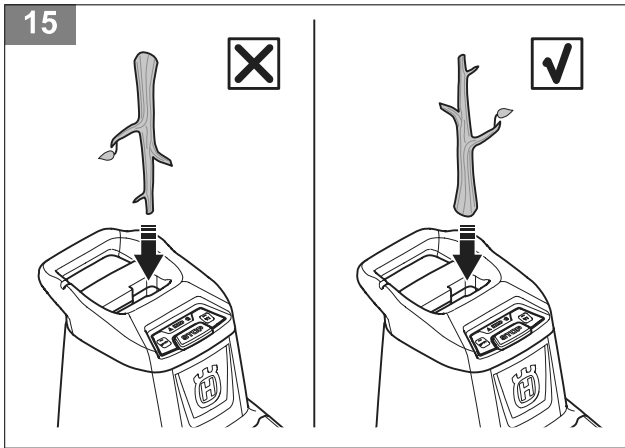


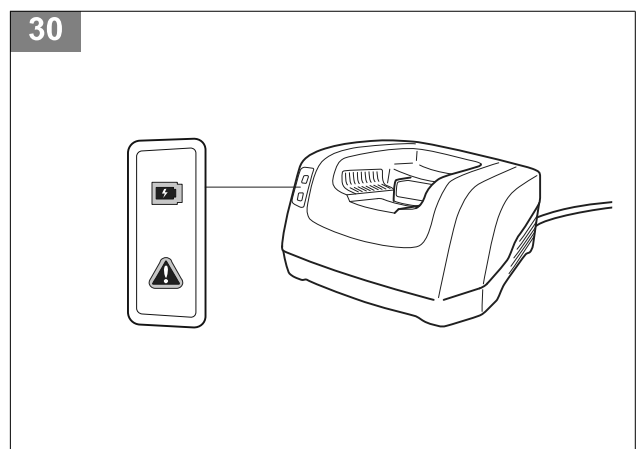
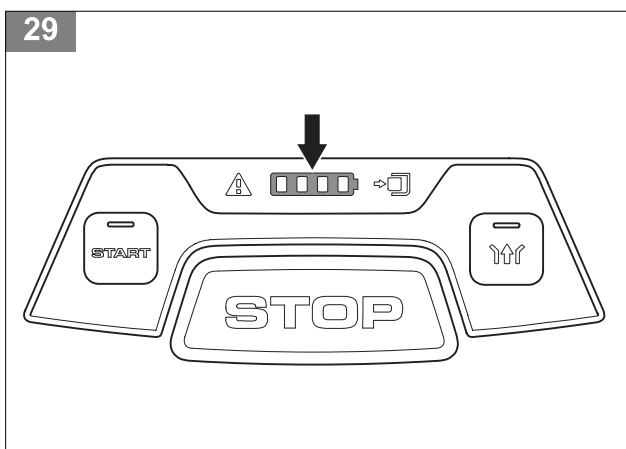
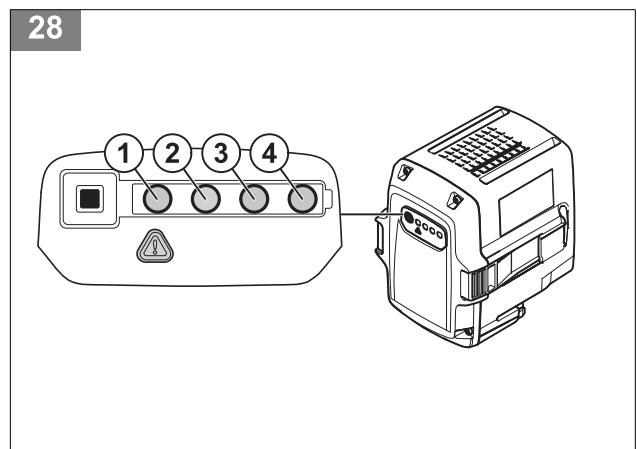
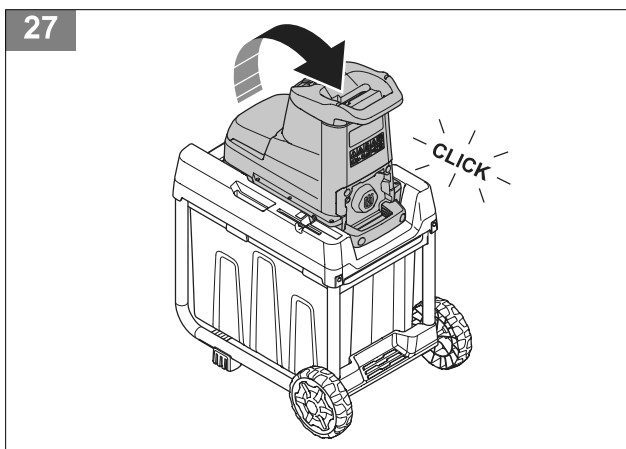
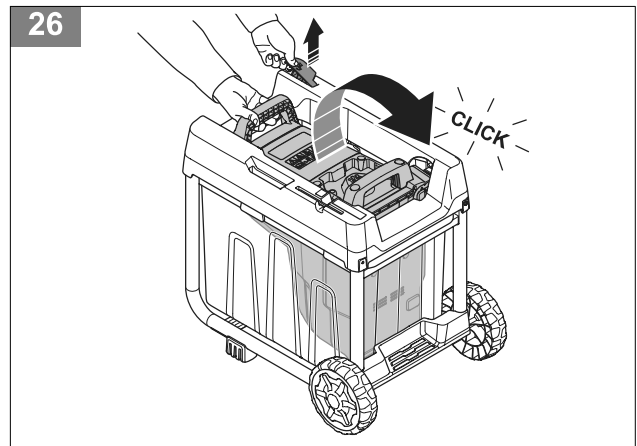
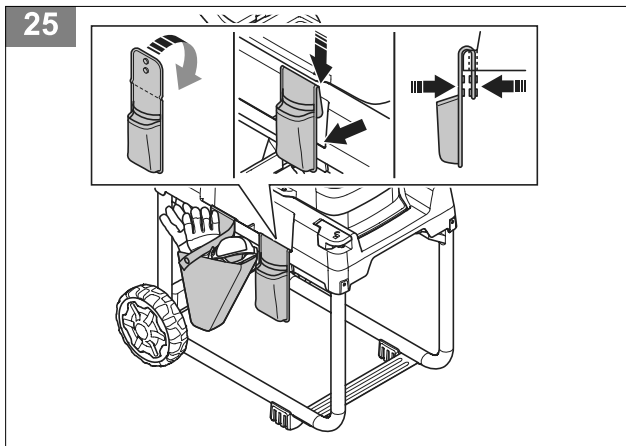
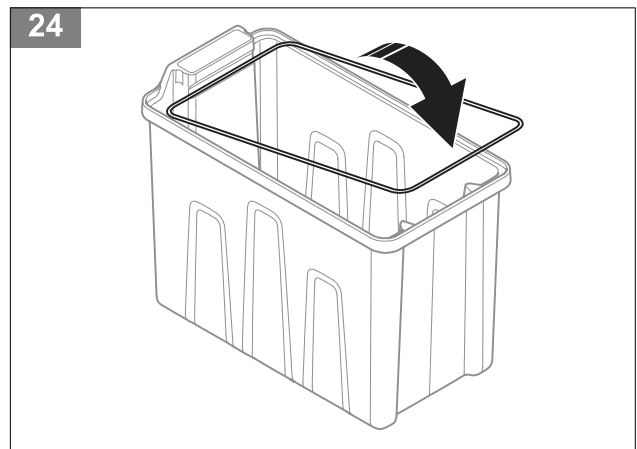
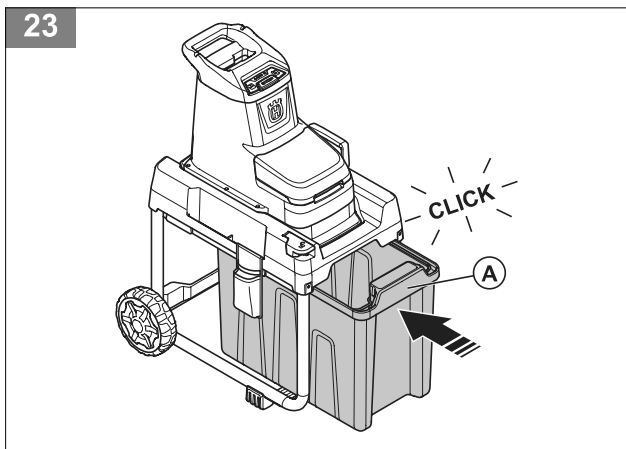
EN	Operator's manual	7-29
BG	Ръководство за експлоатация	30-57
CS	Návod k použití	58-80
DA	Brugsanvisning	81-102
DE	Bedienungsanweisung	103-129
EL	Οδηγίες χρήσης	130-156
ES	Manual de usuario	157-181
ET	Kasutusjuhend	182-203
FI	Käyttöohje	204-225
FR	Manuel d'utilisation	226-250
HR	Priručnik za korištenje	251-273
HU	Használati utasítás	274-297
IT	Manuale dell'operatore	298-321
LT	Operatoriaus vadovas	322-344
LV	Lietošanas pamācība	345-367
NL	Gebruiksaanwijzing	368-391
NO	Bruksanvisning	392-413
PL	Instrukcja obsługi	414-438
PT	Manual do utilizador	439-463
RO	Instrucțiuni de utilizare	464-487
RU	Руководство по эксплуатации	488-515
SK	Návod na obsluhu	516-538
SL	Navodila za uporabo	539-561
SR	Priručnik za rukovaoca	562-585
SV	Bruksanvisning	586-607
TR	Kullanım kılavuzu	608-629
UK	Посібник користувача	630-655
JA	取扱説明書	656-677



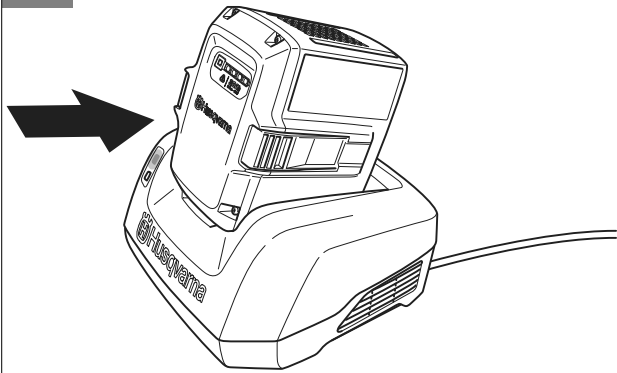
14



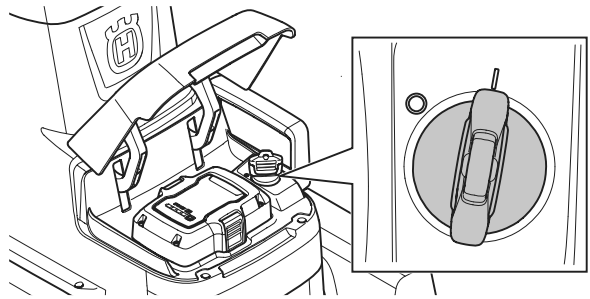




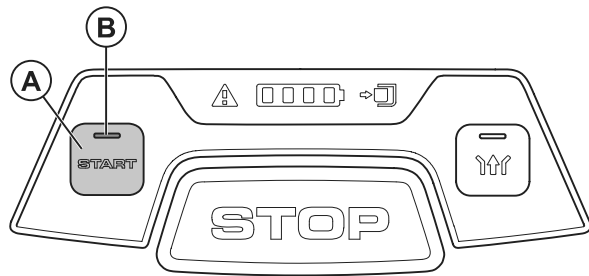
31



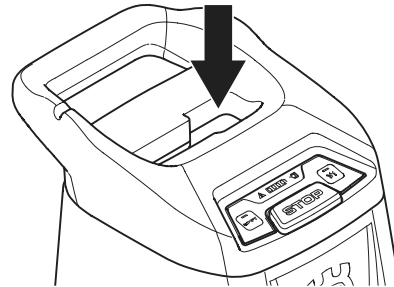
32



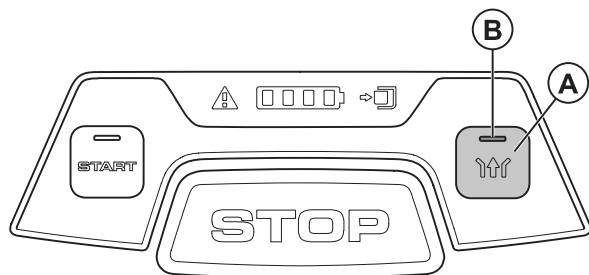
33



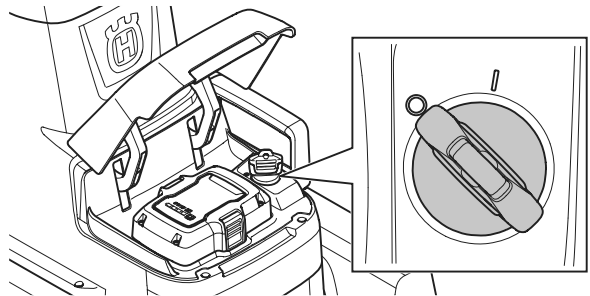
34



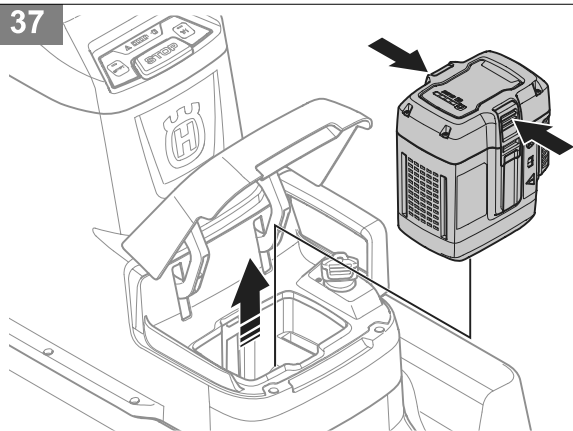
35



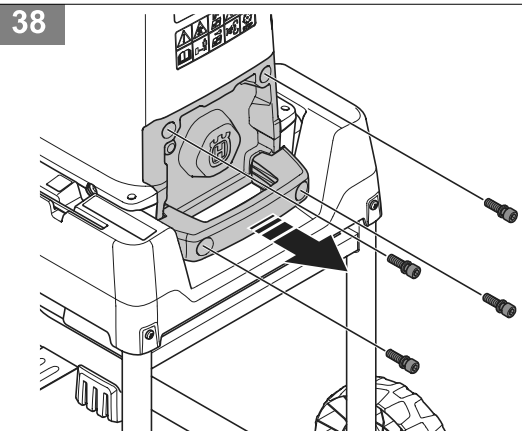
36



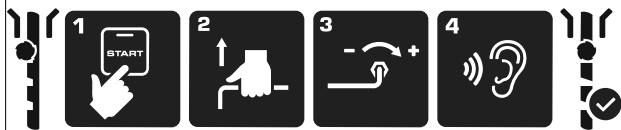
37



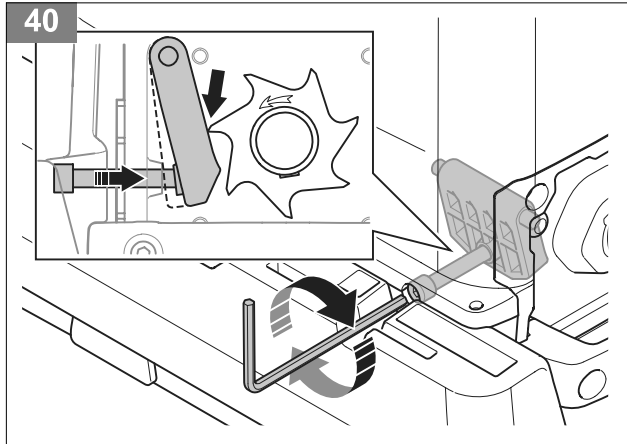
38



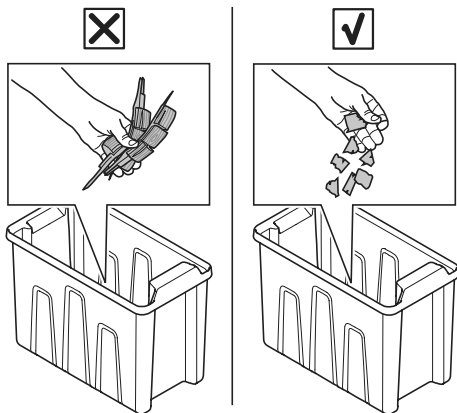
39



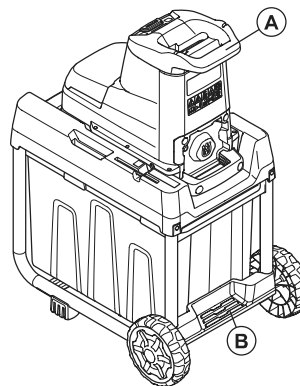
40



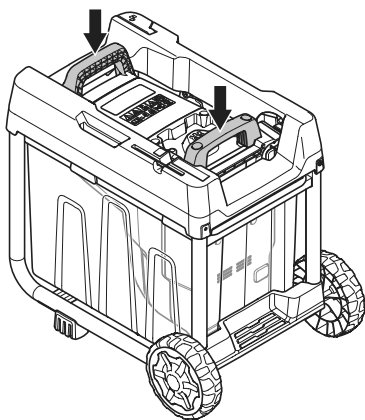
41



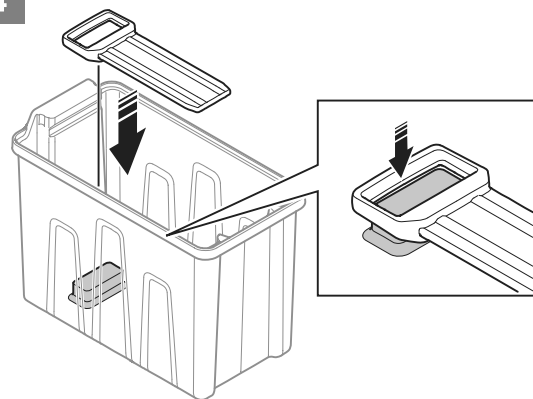
42



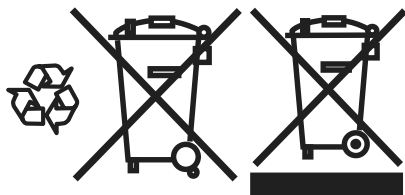
43



44



45



Contents

Introduction.....	7	Troubleshooting.....	22
Safety.....	9	Transportation, storage and disposal.....	24
Assembly.....	17	Technical data.....	26
Operation.....	18	Declaration of Conformity.....	28
Maintenance.....	20		

Introduction

Product description

The product is a garden shredder, using shredding equipment to cut branches into smaller pieces. The material is collected in a collection box.

Product overview

(Fig. 1)

1. User interface
2. START button
3. Start indicator
4. Error LED
5. Battery level indicator
6. Collection box indicator
7. Reverse button
8. Reverse indicator
9. STOP button
10. Footplate
11. Top cover
12. Feed intake
13. Lift handle
14. Battery lid
15. Safety key
16. Accessories holder
17. Push stick
18. Hex key
19. Adjustment screw
20. Fold release handle
21. Servicing lid
22. Collection box
23. Bag holder
24. Collection box handle
25. Battery charger (accessory)
26. Battery (accessory)
27. Tools (accessory)
28. Operator's manual
29. Discharge zone
30. Support feet

Intended use

The product is used for shredding of garden waste made of wood, for example branches and twigs. Do not use the product for other tasks.

Symbols on the product

(Fig. 2) **WARNING:** Be careful and use the product correctly. This product can cause serious injury or death to the operator or others.

(Fig. 3) Read the operator's manual carefully and make sure that you understand the instructions before use.

(Fig. 4) Look out for thrown objects and ricochets.

(Fig. 5) Keep bystanders away.

(Fig. 6) **WARNING:** Risk of crush injuries and cut injuries. Keep body parts away from

openings while the product is on.

do maintenance or examine the product.

(Fig. 7) **WARNING:** Rotating parts. Keep body parts away from openings while the product is on.

(Fig. 8) Use approved hearing protection and approved eye protection.

(Fig. 9) **WARNING:** Disconnect the battery before you do maintenance to the product.

(Fig. 10) **Environmental mark.** The product or package of the product is not domestic waste. Recycle it at an approved disposal location for electrical and electronic equipment.

(Fig. 11) The product has protection against splashing water.

(Fig. 12) Make sure that all moving parts have stopped before you

(Fig. 14) Instructions of how to adjust the distance between the counter plate and the shredding equipment. Refer to *To adjust the distance between the counter plate and the shredding equipment on page 22.*

(Fig. 13) Scannable code.

Note: Other symbols/decals on the product refer to certification requirements for other commercial areas.

Product damage

We are not responsible for damages to our product if:

- the product is incorrectly repaired.
- the product is repaired with parts that are not from the manufacturer or not approved by the manufacturer.
- the product has an accessory that is not from the manufacturer or not approved by the manufacturer.
- the product is not repaired at an approved service center or by an approved authority.

Support

For support about the product, go to the Support section on www.husqvarna.com to access instructions, troubleshooting guides, or to use the Husqvarna Self-Service and the Product Assistant (if available in your

Safety

Safety definitions

Warnings, cautions and notes are used to point out specially important parts of the manual.



WARNING: Used if there is a risk of injury or death for the operator or bystanders if the instructions in the manual are not obeyed.



CAUTION: Used if there is a risk of damage to the product, other materials or the adjacent area if the instructions in the manual are not obeyed.

Note: Used to give more information that is necessary in a given situation.

General safety instructions



WARNING: Read the warning instructions that follow before you use the product.

- This product is dangerous if used incorrectly or if you are not careful. Injury or death can occur if you do not obey the safety instructions.
- This product produces an electromagnetic field during operation. This field may under some circumstances interfere with active or passive medical implants. To reduce the risk of serious or fatal injury we recommend persons with medical implants to consult their physician and the medical implant manufacturer before operating this product.
- Always be careful and use your common sense. If you are not sure how to operate the product in a special situation, stop and speak to your Husqvarna dealer before you continue.
- Do not operate the product without the collection box installed below the discharge zone.
- Keep in mind that the operator will be held responsible for accidents that involve other persons or their property.
- Do not operate the product while people, especially children, or animals are near.
- Keep the product clean. Make sure that you can clearly read signs and decals. Replace damaged decals or decals that cannot be read.
- This product can be used by children aged from 8 years and above and persons with

reduced physical, sensory or mental capabilities or lack of experience and knowledge if they have been given supervision or instruction concerning use of the battery charger in a safe way and understand the hazards involved. Children shall not play with the battery charger. Cleaning and user maintenance shall not be made by children without supervision

- Do not use the product if you are tired, ill, or under the influence of alcohol, drugs or medicine. This has a negative effect on your vision, alertness, coordination and judgment.
- Do not use the product if it is damaged or does not operate correctly.
- Do not operate the product on a paved or gravel surface where ejected material could cause injury.
- Stop the product, turn the safety key to 0 and remove the battery before you attach or remove the collection box.
- Do not change this product or use it if it is possible that it has been changed by others.

Work safety



WARNING: Read the warning instructions that follow before you use the product.

- Keep work area clean and well lit. Cluttered or dark areas invite accidents.
- Do not operate the product in explosive atmospheres, such as in the presence of flammable liquids, gases or dust. The product create sparks which may ignite the dust or fumes.
- Keep children and bystanders away while operating the product. Distractions can cause you to lose control.
- Use the product to shred wooden material. It is not permitted to use it for other tasks. When you put material into the product, be very careful that pieces of metal, rocks, bottles, cans or other unwanted material are not included.
- When you put material into the product, make sure that the stem points down. Material can be ejected from

the feed intake if the divided end points down.
(Fig. 15)

- When you put material into the feed intake, injuries can occur if the material touches you or it suddenly moves.
- Use personal protective equipment.
- Learn how to use the product and its controls safely. Make sure that you know how to stop the motor quickly in an emergency, refer to *To stop the product on page 20*.
- Do not operate the product in rain or wet conditions. The risk of electrical shock increases if water enters the product.
- Do not move the product on slippery surfaces. Slippery surfaces can cause the operator to fall. The product is heavy and can cause injury.
- Be careful when you move the product on slopes. Walk when you move the product. Do not run.
- Do not use the product in bad weather conditions, especially when there is a risk of lightning.
- Before operation, make sure that the shredding equipment, servicing lid and other fasteners are tightened. Make sure that the housing is not damaged and that protective guards are installed.
- Stop the product immediately, turn the safety key to 0,, remove the battery, let the product become cool and make sure that all moving parts have come to a complete stop if one of the conditions that follow occur:
 - The product is out of view.
 - Before you clear a blockage.
 - Before you examine, clean or do maintenance to the product.
 - Before you examine the product after it has hit an object.
 - If the product makes unusual noise or vibrations.
 - Before you move the product.
- Examine the product for damage. Tighten loose parts. Repair damage and replace damaged parts. Let an

approved servicing dealer do the repair.

- Only operate the product on firm, level surfaces in recommended operation position. Refer to *To set the product in operation position on page 18*.
- Keep correct balance at all times. Do not overreach. Do not stay at a higher level than the bottom of the product when you put material into it.
- Do not let cut material assemble in the discharge zone; this causes incorrect discharge and a kickback of material through the feed intake. Make sure that the feed intake chamber is empty before the product is started.
- Stay clear of the discharge zone when you operate the product. Do not use the product without the collection box.
- Keep your face and body away from the feed intake.
- Do not put hands or other body parts or clothing into the feed intake or near parts that move.
- Do not tilt or lift the product when the motor is started.

Safety instructions for operation

Personal protective equipment



WARNING: Read the warning instructions that follow before you use the product.

- Personal protective equipment cannot fully prevent injury but it decreases the degree of injury if an accident does occur. Let your dealer help you select the right equipment.
- Use heavy-duty slip-resistant boots or shoes. Do not use open shoes or go with bare feet.
- Use heavy, long pants.
- Use protective gloves when you operate the product.
- Use protective gloves when you clean the shredding equipment and do other maintenance connected to the shredding equipment.
- Use ear protection and safety glasses. Wear them while you operate the product. Material can be ejected from the feed intake.
- Do not wear clothing that is loose fitting or that has hanging cords or ties.

Safety devices on the product



WARNING: Read the warning instructions that follow before you use the product.

- Do not use a product with safety devices that are damaged or do not operate correctly.
- Do not remove or do modifications to safety devices.
- Do not try to override the interlock of the guard.
- Do a check of the safety devices regularly. If the safety devices are damaged or do not operate correctly, speak to your Husqvarna servicing dealer.

To do a check of the **STOP** button

The STOP button quickly stops the motor and the movement of the shredding equipment.

1. Start the product. Make sure that the start indicator comes on. Refer to *To operate the product on page 19*.
2. Push the STOP button (A). The product is off when the start indicator (B) goes off. (Fig. 16)

To do a check of the covers

The top cover and the servicing lid prevents the risk of injury from the shredding equipment.

- Examine the top cover and the servicing lid to make sure that there are no damages, for example cracks.

To do a check of the collection box

- Examine the collection box to make sure that there are no damages, for example cracks or holes.

To do a check of the safety key

The safety key is below the battery lid. The safety key connects the battery that supplies the motor with power.

- Start and stop the motor to do a check of the safety key.
- If the safety key operates correctly, the motor can only start when the safety key is in the safety lock.

To do a check of the presence control for the collection box



WARNING: Stop the product, turn the safety key to 0 and remove the battery before you attach or remove the collection box.



WARNING: Do not operate the product without the collection box engaged below the discharge zone.

The collection box presence control engages when a collection box is correctly installed below the discharge zone.

Note: The motor can only be started when the collection box is engaged below the discharge zone. When the collection box is removed the motor cannot start or it immediately stops.

1. Start the product. Refer to *To operate the product on page 19*.
2. Pull out the collection box.
3. Make sure that the motor stops and that the collection box indicator (A) comes on. (Fig. 17)

To do a check of the presence control for operation position

The presence control for operation position engages when the product is in operation position.

1. Set the product in operation position. Refer to *To set the product in operation position on page 18*.
2. Start the product. Refer to *To operate the product on page 19*.
3. Pull up the fold release handle and fold the product. (Fig. 18)
4. Make sure that the motor stops.

Battery safety



WARNING: Read the warning instructions that follow before you use the product.

- Use Husqvarna rechargeable batteries as a power supply for related Husqvarna products only. To prevent injury, do not use the battery as a power supply for other devices.
- Do not use non-rechargeable batteries.
- Risk of electrical shock. Do not connect the battery terminals to keys, coins, screws or other metal. This can cause a short circuit of the battery.

- Do not put objects into the air slots of the battery.
- Keep the battery away from sunlight, heat or open flame. The battery can explode and cause burns and/or chemical burns.
- Keep the battery away from rain and wet conditions.
- Keep the battery away from microwaves and high pressure.
- Do not try to disassemble or break the battery.
- If the battery leaks, do not let the liquid touch your body or eyes. If you have touched the liquid, clean the area with a large quantity of water and get medical aid.
- Use the battery in the product only when the ambient temperature is between 5 °C - 40 °C.
- Use the battery charger only when the ambient temperature is between 5 °C - 40 °C.
- The battery will not charge if the battery temperature is more than 50 °C.
- Do not clean the battery or the battery charger with water. Refer to *To clean*

the battery and the battery charger on page 21.

- Do not use a damaged battery.
- Keep batteries in storage away from metal objects such as nails, coins, jewellery.

Battery charger safety



WARNING: Read the warning instructions that follow before you use the product.

- Use the QC battery chargers to charge Husqvarna replacement batteries only.
- Risk of electrical shock or short circuit. Do not put objects into the air slots of the charger. Do not try to disassemble the battery charger. Do not connect the charger terminals to metal objects. Use an approved mains socket.
- This product produces an electromagnetic field during operation. This field may under some circumstances interfere with active or passive medical implants. To reduce the risk of serious or fatal injury, we recommend persons with medical implants to

consult their physician and the medical implant manufacturer before operating this product.

- Regularly make sure that the power cord of the battery charger is not damaged and that there are no cracks in it.
- Do not lift the battery charger by the power cord. To disconnect the battery charger from a mains socket, pull out the plug. Do not pull the power cord.
- Keep the power cord and extension cables away from water, oil and sharp edges. Make sure that the cable is not pinched in doors, fences or equivalent. It can cause the charger to become energized.
- Do not clean the battery charger with water.
- The battery charger can be used by children aged from 8 years and above and persons with reduced physical, sensory, or mental capabilities or lack of experience and knowledge if they have been given supervision or instruction concerning use of the battery charger in a safe way and understand the hazards involved. Children shall not play with the battery charger. Cleaning and user

maintenance shall not be made by children without supervision.

- Do not charge non-rechargeable batteries in the battery charger.
- Do not use the battery charger near flammable materials or materials that can cause corrosion. Do not cover the battery charger. Pull out the plug to the battery charger if there is smoke or fire.
- Do not use a damaged battery charger.
- Only charge the battery indoors in a room with good airflow and away from sunlight. Do not charge the battery in wet conditions.

Safety instructions for maintenance



WARNING: Read the warning instructions that follow before you use the product.

- To prevent accidental start during maintenance, turn the safety key to 0 and remove the battery. Wait at minimum 5 seconds before you start the maintenance.
- Only do the maintenance work given in this operator's

manual. Other maintenance tasks or professional repairs must be done by your Husqvarna servicing dealer.

- Do the maintenance work correctly to increase the lifetime of the product and decrease the risk of accidents.
- Make sure that all moving parts have stopped before you do maintenance on the product.
- Replace damaged, worn or broken parts. Always use original spare parts from the manufacturer. Other spare parts can cause damage to the product and increase the risk of accidents.
- To prevent injury, do not remove or do modifications to the safety devices.
- Put on heavy duty gloves when you clean the shredding equipment. The blades are very sharp and cuts can easily occur.
- The shredding equipment can move when the product is off - risk of injury.
- Let your Husqvarna servicing dealer regularly examine the product and make necessary adjustments and repairs.
- Obey the instructions for how to change accessories. Only use accessories approved by Husqvarna.
- When not in operation, keep the product, battery and battery charger apart in a dry, indoor and locked area. Make sure that children and persons that are not approved cannot get access to the product, battery or battery charger.

Assembly

Introduction



WARNING: Before you assemble the product, read the safety chapter.



WARNING: To prevent accidental start during assembly, turn the safety key to 0, remove the battery and wait at minimum 5 seconds.

To assemble the support feet

1. Make sure that the product is in the storage position. Refer to *To set the product in storage position on page 25*.
2. Put the product with the top side to the ground.
3. Put the support feet in position and install the screws. (Fig. 19)

To assemble the wheels

1. Make sure that the product is set in the storage position. Refer to *To set the product in storage position on page 25*.
2. Put the product with the top side to the ground.
3. Install the wheel axle (A). (Fig. 20)
4. Install the washer (B), sleeve (C) and wheel (D) on each side. (Fig. 21)
5. Install the nut (E) on each side. (Fig. 22)

Note: Hold the axle in position when you install the nut.

6. Make sure that the wheels can move freely. Adjust the nuts if it is necessary.
7. Install the wheel covers (F).

To install the collection box



WARNING: Stop the product, turn the safety key to 0 and remove the battery before you attach or remove the collection box.



WARNING: Do not operate the product without the collection box engaged below the discharge zone.

Note: The motor can only be started when the collection box is engaged below the discharge zone. When the collection box is removed the motor cannot start or it immediately stops.

1. Use the collection box with the bag (optional). Refer to *To use the collection box with a bag on page 18*.

2. Hold the front handle (A) with one hand and put the collection box into the section below the discharge zone. (Fig. 23)
3. Push the collection box to the end position to engage the presence control.
4. To use the collection box with a bag, refer to *To use the collection box with a bag on page 18*.

To use the collection box with a bag



WARNING: Do not operate the product without the collection box engaged below the discharge zone.

Note: The motor can only be started when the collection box is engaged below the discharge zone. When the collection box is removed the motor cannot start or it immediately stops.

1. Put a bag around the bag holder.
2. Push the bag holder into the groove on the collection box. (Fig. 24)

To install the tool holders (accessories)

The Husqvarna tool holders (accessories) can be used to keep tools on the product, for example pruning shears, pruner, gloves and more. Speak to your Husqvarna servicing dealer for information about available accessories for your product.

1. Hang the tool holders on the accessories holder. (Fig. 25)
2. Attach the tool holders with the snap buttons.

Operation

Introduction



WARNING: Before you operate the product, you must read and understand the safety chapter.

Husqvarna Connect

Husqvarna Connect is a free app for your mobile device. The Husqvarna Connect app gives extended functions for your Husqvarna product:

- Extended product information.
- Information about, and help with, product parts and servicing.

To start to use Husqvarna Connect

1. Download the Husqvarna Connect app on your mobile device.
2. Register in the Husqvarna Connect app.
3. Do the instruction steps in the Husqvarna Connect app to connect and register the product.

To set the product in operation position

1. Hold the lift handle. (Fig. 26)
2. Pull the fold release handle up.
3. Pull the lift handle rearward until the top of the product is fully unfolded and locks in position. (Fig. 27)



WARNING: Do not operate the product unless the top of the product is fully unfolded.

4. Make sure that the collection box is installed. Refer to *To install the collection box on page 18*.

Battery



WARNING: Before you use the battery, you must read and understand the safety chapter. You must also read and understand the operator's manual for the battery and the battery charger.

Keep the battery and the battery charger in correct ambient temperatures.

	Ambient temperature
Operation of the battery	5 °C–40 °C
Charging of the battery	5 °C–40 °C

Battery status

The display shows the remaining battery capacity and if there are problems with the battery. Push the battery indicator button to get information of the state of charge of the battery. The warning symbol on the battery is on when an error has occurred. Refer to *Battery on page 24*.

(Fig. 28)

LED lights	Battery status
All LEDs are lit	Fully charged (76-100%)
LED 1, LED 2, LED 3 are lit	The battery is 51%-75% charged
LED 1, LED 2 are lit	The battery is 26%-50% charged
LED 1 is lit	The battery is 6%-25% charged.
LED 1 flashes	The battery is 0%-5% charged.

Battery status LED on the product

When the battery is installed to the product and the safety key is set to 1, the LEDs on the user interface show the battery status.

(Fig. 29)

LED lights	Battery status
All LEDs are lit	Fully charged (76-100%)
LED 1, LED 2, LED 3 are lit	The battery is 51%-75% charged
LED 1, LED 2 are lit	The battery is 26%-50% charged
LED 1 is lit	The battery is 6%-25% charged.
LED 1 flashes	The battery is 0%-5% charged.

To charge the battery

Charge the battery before the first use. The battery is only 30% charged when supplied to the customer.

Note: The battery charger must be connected to the voltage and frequency specified on the rating plate.

The battery does not charge if the battery temperature is above 50 °C/122 °F. The battery charger decreases the temperature of the battery before it starts to charge.

1. Connect one end of the power cord for the battery charger into the socket of the battery charger.
2. Connect the other end of the power cord for the battery charger in an grounded mains socket. The LED on the battery charger flashes green one time. (Fig. 30)
3. Put the battery in the battery charger. The green light on the charger comes on when the battery is correctly connected to the battery charger. (Fig. 31)
4. When all LEDs on the battery have come on the battery is fully charged. Charge the battery for maximum 24 hours.
5. To disconnect the battery charger from the mains socket, pull the plug, not the power cord.
6. Remove the battery from the battery charger.

To start the product

1. Set the product in operation position. Refer to *To set the product in operation position on page 18*.
2. Make sure that the feed intake chamber is empty.
3. Open the battery lid.
4. Put a charged battery in the battery holder.
5. Turn the safety key to 1. (Fig. 32)
6. Push the START button (A) on the user interface. The start indicator (B) comes on. (Fig. 33)

To operate the product

1. Supply material into the larger section of the feed intake. (Fig. 34)

2. To empty the collection box, refer to *To empty the collection box on page 21*.

To use the reverse function

1. Push and hold the reverse button (A). The reverse indicator (B) comes on. (Fig. 35)



WARNING: Material can be ejected from the feed intake when the product is in reverse. Make sure that no parts of your body is near the feed intake.

2. Release the reverse button to stop the product.

To stop the product



WARNING: Turn the safety key to 0, remove the battery and make sure that all moving parts have come to a complete stop before you let the product out of view.

1. Push the STOP button (A). The start indicator (B) goes off. (Fig. 16)

Note: When the reverse function operates, the motor automatically stops when the reverse button is released.

2. Open the battery lid and turn the safety key to 0. (Fig. 36)
3. To remove the battery, push the 2 release buttons and pull out the battery. (Fig. 37)
4. Charge the battery if it is weak. For more information, refer to *To charge the battery on page 19*.

High load function

When the product cuts thick branches and material, the rpm of the motor increases. The motor goes back to standard mode when high load is not necessary.

Automatic reverse function

During operation, the shredding equipment can temporarily stop because of too thick material that has been put into the feed intake. The shredding equipment will automatically turn in the opposite direction and try to eject the material 3 times, the product will then stop. The error LED will show if the shredding equipment cannot eject the material, refer to *Error LED on page 23*. If the material has not been ejected it is necessary to clear the blockage, refer to *To clear a blockage on page 22*.

To get a good result

- Only cut new branches and material.
- Put branches into the feed intake one at a time.
- Do not cut branches with too much leaves. Too much leaves can cause a blockage.
- Divide branches into parts with the correct dimensions for the feed intake.
- Do not cut branches with a diameter that is more than the maximum branch diameter. Refer to *Technical data on page 26*.
- The distance between the counter plate and the shredding equipment must be adjusted if the material is not correctly cut. Refer to *To adjust the distance between the counter plate and the shredding equipment on page 22*.

Maintenance

Introduction



WARNING: Before you do maintenance, you must read and understand the safety chapter.



WARNING: To prevent accidental start when you do maintenance, turn the safety key to 0 and remove the battery. Wait a minimum of 5 seconds before you start maintenance work.

For all servicing and repair work on the product, special training is necessary. We guarantee the availability

of professional repairs and servicing. Speak to your Husqvarna servicing dealer.

For more detailed information, refer to www.husqvarna.com.

Maintenance schedule

The maintenance intervals are calculated from daily use of the product. The intervals change if the product is not used daily.

For maintenance identified with * refer to instructions in *Safety on page 9*.

	Each use	Monthly	Each season
Do a general inspection.	X		

	Each use	Monthly	Each season
Clean the product.	X		
Do a check of the STOP button.*	X		
Do a check of the covers.*	X		
Do a check of the collection box.*	X		
Do a check of the safety key.*	X		
Do a check of the presence control for the collection box.*	X		
Do a check of the presence control for the operation position.*	X		
Examine the battery for damage.	X		
Do a check of the battery state of charge.	X		
Make sure that the release buttons on the battery operates correctly and that the battery locks into the product.	X		
Examine the battery charger for damage and make sure that it operates correctly.		X	
Examine the connections between the battery and the product. Also examine the connection between the battery and the battery charger.			X

To do a general inspection

- Make sure that all nuts and screws on the product are tightened correctly.
- Make sure that there are no damage, for example cracks, on the covers or on the collection box.

To clean the product

- Clean plastic parts with a clean and dry cloth.
- Do not use water to clean the product. Water can enter the battery or the motor and cause short circuit or damage to the product.
- Do not use a high pressure washer to clean the product.
- Do not flush water directly on the motor.
- Use a brush to remove leaves, grass and dirt.
- Clean the shedding equipment. Refer to *To clean the shredding equipment on page 22*.

To clean the battery and the battery charger



WARNING: Do not clean the battery or the battery charger with water.



WARNING: Do not use any chemical substances to clean the battery.

- Make sure that the battery and the battery charger are clean and dry before you put the battery into the battery charger.
- Clean the battery terminals with compressed air or use a soft and dry cloth.
- Clean the surfaces of the battery and the battery charger with a soft and dry cloth.

To empty the collection box



WARNING: Stop the product, turn the safety key to 0 and remove the battery before you attach or remove the collection box.

1. Stop the product. Refer to *To stop the product on page 20*.
2. Hold the front handle of the collection box with one hand.
3. Remove the collection box from the product.
4. Use the handle below the collection box to empty it, or remove the bag from the bag holder, refer to *To use the collection box with a bag on page 18*.

To remove the servicing lid

1. Stop the product. Refer to *To stop the product on page 20*.
2. Remove the 4 screws and the servicing lid. (Fig. 38)
3. Assemble in the opposite sequence.

To clear a blockage

1. Stop the product. Refer to *To stop the product on page 20*.



WARNING: Make sure that all moving parts come to a complete stop.

2. Examine what has caused the blockage.
3. Use the push stick to loosen unwanted material.
4. Start the product. Refer to *To start the product on page 19*.
5. Remove the blockage:
 - a) If leaves have caused a blockage, you can try to cut a dry branch without leaves to clear the blockage.
 - b) If branches have caused the blockage, use the reverse function to try to clear the blockage. Refer to *To use the reverse function on page 20*.



WARNING: Material can be ejected from the feed intake when you use the reverse function.

6. If the blockage has not been removed, stop the product and clean the shredding equipment. Refer to *To clean the shredding equipment on page 22*.

To clean the shredding equipment



WARNING: Wear heavy duty gloves when you clean the shredding equipment. The shredding equipment is very sharp and cuts can easily occur.



WARNING: The shredding equipment can move when the product is off.

1. Stop the product. Refer to *To stop the product on page 20*.
2. Remove the servicing lid. Refer to *To remove the servicing lid on page 21*.
3. Clean the shredding equipment with a brush.



CAUTION: Make sure that the shredding equipment is correctly installed and that the text is in the direction of the servicing lid.

4. Install the servicing lid.

To adjust the distance between the counter plate and the shredding equipment

The distance between the counter plate and the shredding equipment must be adjusted if the material is not correctly cut.



WARNING: Metal strips can fall out in the collection box when you do the adjustment. The metal strips can be sharp and cause injury. Empty the collection box before operation.

1. Empty and install the collection box. Refer to *To empty the collection box on page 21*.
2. Start the product.
3. Use the hex key to slowly turn the hex bolt clockwise. Stop when you hear a grinding sound. (Fig. 39) (Fig. 40)
4. Slowly turn the hex bolt 45° degrees counterclockwise.
5. Slowly turn the hex bolt clockwise. Stop when you hear a grinding sound.
6. Make sure that the material is correctly cut. (Fig. 41)



Troubleshooting

Product

Problem	Possible cause	Solution
The product does not start when the START button is pushed.	The product is not set in operation position.	Set the product in operation position. Refer to <i>To set the product in operation position on page 18</i> .
	Incorrect start procedure.	Refer to <i>To start the product on page 19</i> .
	The collection box is not installed below the discharge zone when the product is started.	Install the collection box, refer to <i>To install the collection box on page 18</i> .
The material is not correctly cut.	The distance between the counter plate and the shredding equipment must be adjusted.	Adjust the distance between the counter plate and the shredding equipment. Refer to <i>To adjust the distance between the counter plate and the shredding equipment on page 22</i> .

Problem	Possible cause	Solution
The material does not move correctly into the feed intake chamber.	The material is not correctly supplied into the feed intake.	Supply material into the larger section of the feed intake. Refer to <i>To operate the product on page 19</i> and <i>To get a good result on page 20</i> .
There is a buildup of material in the feed intake chamber.	Leaves or not cut material has caused a buildup in the feed intake chamber.	Empty the feed intake chamber before operation. Refer to <i>To clean the shredding equipment on page 22</i> . If leaves have caused a blockage, refer to <i>To clear a blockage on page 22</i> .
	The collection box is full.	Empty the collection box. Refer to <i>To empty the collection box on page 21</i> .
The material is stopped when you put it into the feed intake.	There is a blockage in the product.	Clear the blockage. Refer to <i>To clear a blockage on page 22</i> .
It is not possible to remove or install the collection box.	There is a blockage in the shredding equipment that prevents movement of the collection box.	Clear the blockage.

User interface

Symbol	Name	Shows on the display	Cause/Solution
	Error LED	The symbol flashes	An error has occurred. Refer to <i>Error LED on page 23</i> .
	Collection box indicator	The symbol flashes	The collection box is not installed below the discharge zone. Refer to <i>To install the collection box on page 18</i> .

Error LED

The warning indicator (error LED) is found on the user interface.

Problem	Error LED (number of flashes)	Cause	Solution
The product does not operate correctly.	3	The shredding equipment is blocked.	Clear the blockage. Refer to <i>To clear a blockage on page 22</i> .
	10	The motor control is too hot.	Stop the motor and wait until it has become cool.
	11	The motor control is too hot.	Stop the motor and wait until it has become cool.
The product stops.	No flashes	Battery connector failure.	Examine the battery connector.
	8	The battery is weak.	Charge the battery. Refer to <i>To charge the battery on page 19</i> .
	9	Battery error or no signal from battery.	Examine the battery connector and put the battery in the product correctly. If the error LED on the battery flashes, refer to <i>To clean the battery and the battery charger on page 21</i> .

Problem	Error LED (number of flashes)	Cause	Solution
Other errors.	If other errors occur, turn the safety key to 0, remove the battery and speak to your Husqvarna servicing dealer.		

Battery

LED on the battery	Cause	Solution
The green LED flashes.	The battery voltage is low.	Charge the battery. Refer to <i>To charge the battery on page 19</i> .
The battery error LED flashes.	The battery is too cold or too hot to use.	Let the battery cool down or move it indoors to warm it up. When the battery has the correct temperature, it can be used again. Use the battery in the product only when the ambient temperature is 5 °C–40 °C.
	The battery is empty.	Charge the battery. Refer to <i>To charge the battery on page 19</i> .
The battery error LED comes on.	There is a permanent battery error.	Speak to your Husqvarna servicing dealer.

Battery charger

LED on the battery charger	Cause	Solution
The error LED flashes or comes on.	The battery charger is too cold or too hot to use.	Let the battery charger cool down or move it indoors to warm it up. When the battery charger has the correct temperature, it can be used again. Use the battery charger when the ambient temperature is 5 °C–40 °C.
	Other errors.	Speak to your Husqvarna servicing dealer.

Transportation, storage and disposal

Introduction



WARNING: To prevent accidental start during transport and storage turn the safety key to 0, remove the battery and wait a minimum of 5 seconds.

To pull the product

1. Hold the lift handle (A) with one hand. (Fig. 42)
2. Put one foot on the footplate (B).
3. Tilt the product rearward.

To lift the product

1. Hold the lift handle.
2. Pull the fold release handle up.
3. Push the lift handle forward until the top of the product is fully folded down and locks in position. (Fig. 18)
4. Lift the product with the 2 lift handles. (Fig. 43)

Transportation

- The Dangerous Goods Legislation requirements apply to the contained Li-ion batteries.
- For commercial transports special requirements on package and labels must be obeyed.

- Make sure that you obey the regulations for dangerous material when you prepare the product for transport. Local regulations can apply.
- Always remove the battery for transport.
- Put tape on the battery connectors and make sure that the battery cannot move around during transport.
- Attach the product during transport.

To set the product in storage position

1. Set the safety key to 0.



WARNING: The product must be set to off during transport and storage to prevent accidental start.

2. Remove the battery and wait a minimum of 5 seconds.
3. Empty and install the collection box. Refer to *To empty the collection box on page 21*.
4. Attach the push stick to the bottom of the collection box. (Fig. 44)
5. Move the product to the storage location. Refer to *To pull the product on page 24* or *To lift the product on page 24*.
6. Obey the instructions for storage. Refer to *Storage on page 25*.

Storage

- Set the product to off and let it become cool.
- Remove the battery.
- Keep the battery and the battery charger in a dry space where there is no moisture or frost.
- Disconnect the battery from the battery charger during storage.
- Do not keep the battery where static electricity can occur. Do not keep the battery in a metal box.
- Keep the product where the ambient temperature is between -10°C and 40°C.
- Keep the battery where the ambient temperature is between 5 °C and 25 °C and not in direct sunlight.
- Keep the battery charger where the ambient temperature is between 5 °C and 45 °C and not in direct sunlight.
- Make sure that the battery is charged to 30% - 50% before you put the product in long-term storage.
- Keep the product, battery and battery charger in a locked area, away from children and persons that are not approved.
- Clean the shredding equipment. Refer to *To clean the shredding equipment on page 22*.
- Clean the product and make sure that the collection box is empty and dry.

- Do the maintenance procedures given in this operator's manual. Refer to *Maintenance on page 20*.
- Do a complete servicing before you put the product in long-term storage.

Disposal

Symbols on the product or the packaging of the product indicate that this product cannot be handled as domestic waste. It must be submitted to an appropriate recycling station for the recovery of electrical and electronic equipment.

By ensuring that this product is taken care of correctly, you can help to counteract the potential negative impact on the environment and people that can otherwise result through the incorrect waste management of this product. For more detailed information about recycling this product, contact your municipality, your domestic waste service or the shop from where you purchased the product.

(Fig. 45)

Technical data

Technical data

	GS 340is
Motor	
Motor type	BLDC (brushless) 36V
Shredding equipment speed – Nominal, rpm	28/min
Shredding equipment speed – High load, rpm	44/min
Motor output – max. kW	1.8
Motor output – Nominal, kW	1.4
Weight	
Weight with collection box (without battery), kg	23.5
Weight with collection box (incl. 1 x BLi30), kg	25.5
Battery	
Type of battery	Husqvarna Battery Series
Battery runtime	
Battery runtime, min, (free run) with standard mode activated, with one Husqvarna 7.5 Ah battery (BLi30).	225
Noise emissions ¹	
Sound power level, measured dB (A)	92
Sound power level, guaranteed L _{WA} dB (A)	94
Sound levels ²	
Sound pressure level at the operator's ear, dB (A)	86
Shredding equipment	
Maximum branch diameter, mm	40
Collection box capacity, liter	45

Approved batteries	Type	Battery capacity, Ah	Voltage, V	Weight, lb/kg
BLi30	Lithium-ion	7.5	36	4.2/1.9
40-B140	Lithium-ion	4.0	36	2.6/1.2

¹ Noise emissions in the environment measured as sound power (L_{WA}) in conformity with EC directive 2000/14/EC.

² Reported data for noise pressure level has an uncertainty factor (K) of 1.5 dB (A).

Approved chargers for the specified batteries, BLi	Input voltage, V	Frequency, Hz	Power, W
40-C80	100-240	50-60	68.8
QC250	100-240	50-60	250

Declaration of Conformity

EU Declaration of Conformity

We, **Husqvarna AB**, SE-561 82 Huskvarna, Sweden,
tel: +46-36-146500, declare on our sole responsibility
that the product:

Description	Garden shredder
Brand	Husqvarna
Type / Model	GS 340is (The designation GS refers to garden shredder)
Identification	Serial numbers dating from 2024 and onwards

complies fully with the following EU directives and
regulations:

Regulation	Description
2006/42/EC	"relating to machinery"
2014/30/EU	"relating to electromagnetic compatibility"
2000/14/EC	"relating to the noise emissions in the environment"
2011/65/EU	"on the restriction of the use of certain hazardous substances in electrical and electronic equipment"

and that the following standards and/or technical
specifications are applied: EN 60335-1:2012/A16:2023,
EN 50434:2013, EN 55014-1:2017, A11:2020, EN
IEC 55014-1:2021, EN 55014-2:1997,/A1:2001/A2:2008/
AC:1997, EN IEC 55014-2:2021, EN IEC 63000:2018

SMP Svensk Maskinprovning AB has also verified
agreement with annex V of the council's directive
2000/14/EC.

For information relating to noise emissions, refer to
Technical data on page 26.

Huskvarna, 2024-12-02



Claes Losdal, Development Manager/Garden Products
Husqvarna AB

Responsible for technical documentation



UK Declaration of Conformity

We, **Husqvarna AB**, SE-561 82 Huskvarna, Sweden,
tel: +46-36-146500, declare on our sole responsibility
that the product:

Description	Garden shredder
Brand	Husqvarna
Type / Model	GS 340is (The designation GS refers to garden shredder)
Identification	Serial numbers dating from 2024 and onwards

complies fully with the following UK regulations:

Description
The Restriction of the Use of Certain Hazardous Substances in Electrical and Electronic Equipment Regulations 2012
The Supply of Machinery (Safety) Regulations 2008
Electromagnetic Compatibility Regulations 2016
The Noise Emission in the Environment by Equipment for use Outdoors Regulations 2001, schedule 9

and that the following standards and/or technical specifications are applied: EN 60335-1:2012/A16:2023, EN 50434:2013, EN 55014-1:2017, A11:2020, EN IEC 55014-1:2021, EN 55014-2:1997,/A1:2001/A2:2008/AC:1997, EN IEC 55014-2:2021, EN IEC 63000:2018

SMP Svensk Maskinprovning AB has also verified agreement with annex V of the council's directive 2000/14/EC.

For information relating to noise emissions, refer to *Technical data on page 26*.

Huskvarna, 2024-12-02



Claes Losdal, Development Manager/Garden Products
Husqvarna AB

Responsible for technical documentation

**UK
CA**

UK Importer:
Husqvarna UK Ltd
Preston Road, Co. Durham
DL5 6UP