

RM 655.1 VS

STIHL



2 - 23	Gebrauchsanleitung	418 - 439	Kullanma talimatı
23 - 43	Instruction Manual	439 - 459	Udhëzimi për përdorim
43 - 65	Notice d'emploi	459 - 480	Instrukcja użytkowania
65 - 86	Manual de instrucciones	480 - 500	Kasutusjuhend
86 - 106	Uputa za uporabu	500 - 519	Ekspluatavimo instrukcija
106 - 125	Skötselmanual	519 - 542	Ръководство за употреба
125 - 145	Käyttöohje	542 - 563	Instrucțiuni de utilizare
145 - 166	Istruzioni d'uso	563 - 583	Uputstvo za upotrebu
166 - 186	Betjeningsvejledning	583 - 602	Navodilo za uporabo
186 - 205	Bruksanvisning	603 - 625	Упатство за употреба
205 - 226	Návod k použití		
226 - 246	Használati utasítás		
246 - 268	Instruções de serviço		
268 - 288	Návod na obsluhu		
288 - 309	Handleiding		
309 - 331	Инструкция по эксплуатации		
331 - 351	Lietošanas instrukcija		
351 - 373	Інструкція з експлуатації		
373 - 395	Қолдану нұсқаулығы		
396 - 418	οδηγίες χρήσης		



STIHL Tirol GmbH

i. V. 

Matthias Fleischer, Leiter Produktentwicklung

i. V. Sven Zimmermann, Hauptabteilungsleiter
Qualität

24 Anschriften

STIHL Hauptverwaltung

ANDREAS STIHL AG & Co. KG
Postfach 1771
D-71307 Waiblingen

STIHL Vertriebsgesellschaften

DEUTSCHLAND

STIHL Vertriebszentrale AG & Co. KG
Robert-Bosch-Straße 13
64807 Dieburg
Telefon: +49 6071 3055358

ÖSTERREICH

STIHL Ges.m.b.H.
Fachmarktstraße 7
2334 Vösendorf
Telefon: +43 1 86596370

SCHWEIZ

STIHL Vertriebs AG
Isenrietstraße 4
8617 Mönchaltorf
Telefon: +41 44 9493030

Contents

1	Introduction.....	23
2	Guide to Using this Manual.....	23
3	Overview.....	24
4	Safety Precautions.....	25
5	Preparing the Lawn Mower for Operation.....	31
6	Assembling the Lawn Mower.....	31
7	Refuelling the Lawn Mower.....	33
8	Adjusting the Lawn Mower for the User.....	33
9	Starting and Stopping the Engine.....	34
10	Checking the Lawn Mower.....	35
11	Operating the Lawn Mower.....	35
12	After Finishing Work.....	37

13	Transporting.....	37
14	Storing.....	38
15	Cleaning.....	38
16	Maintenance.....	39
17	Repairing.....	40
18	Troubleshooting.....	40
19	Specifications.....	41
20	Spare Parts and Accessories.....	41
21	Disposal.....	42
22	EC Declaration of Conformity.....	42
23	UKCA Declaration of Conformity.....	42
24	Addresses.....	43

1 Introduction

Dear Customer,

Thank you for choosing STIHL. We develop and manufacture our quality products to meet our customers' requirements. The products are designed for reliability even under extreme conditions.

STIHL also stands for premium service quality. Our dealers guarantee competent advice and instruction as well as comprehensive service support.

STIHL expressly commit themselves to a sustainable and responsible handling of natural resources. This user manual is intended to help you use your STIHL product safely and in an environmentally friendly manner over a long service life.

We thank you for your confidence in us and hope you will enjoy working with your STIHL product.



Dr. Nikolas Stihl

**IMPORTANT! READ BEFORE USING AND
KEEP IN A SAFE PLACE FOR REFERENCE.**

2 Guide to Using this Manual

2.1 Applicable Documents

This instruction manual is a translation of the original manufacturer's instructions in the sense of EC Directive 2006/42/EC.

Local safety regulations apply.

- In addition to this instruction manual, read, understand and keep the following documents:
 - Instruction manual for the engine Kohler HD775

2.2 Warning Notices in Text



DANGER

- This notice refers to risks which result in serious or fatal injury.
 - ▶ Serious or fatal injuries can be avoided by taking the precautions mentioned.



WARNING

- This notice refers to risks which **can** result in serious or fatal injury.
 - ▶ Serious or fatal injuries can be avoided by taking the precautions mentioned.

NOTICE

- This notice refers to risks which can result in damage to property.
 - ▶ Damage to property can be avoided by taking the precautions mentioned.

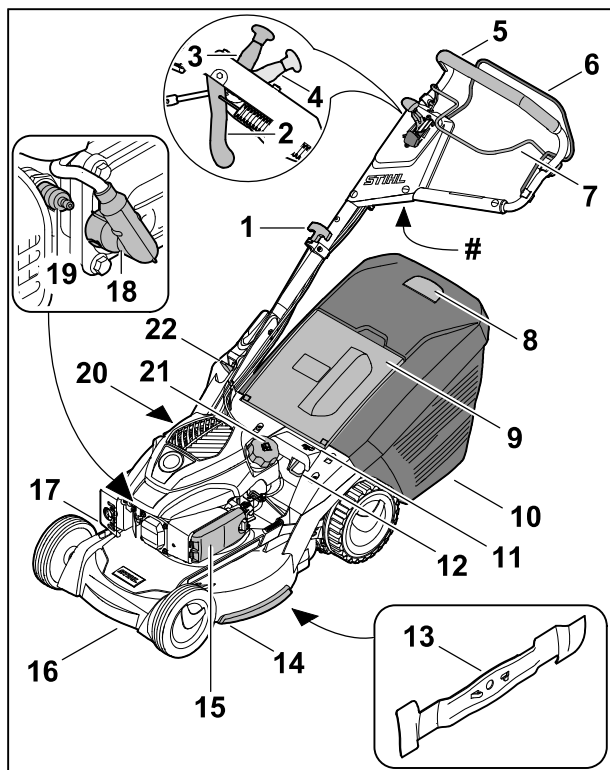
2.3 Symbols in Text



This symbol refers to a chapter in this instruction manual.

3 Overview

3.1 Lawn mower



1 Starter grip

The starter grip is used for starting the engine.

2 Lever for the blade brake clutch

The lever serves to engage the blade clutch.

3 Throttle lever

The throttle lever serves to adjust the throttle.

4 Self-propulsion lever

The lever is used to set the self-propulsion speed.

5 Handlebar

The handlebar is used to hold, guide and transport the lawn mower.

6 Control bar for mowing

The control bar is used to start and stop the engine.

7 Control bar for self-propulsion

The control bar for self-propulsion switches the self-propulsion on and off.

8 Level indicator

The level indicator indicates the filling level of the grass catcher box.

9 Discharge flap

The discharge flap closes the discharge chute.

10 Grass catcher box

The grass catcher box collects the grass cuttings.

11 Handle

The handle is used to hold the lawn mower when adjusting the cutting height and to transport the lawn mower.

12 Cutting height lever

The lever is used to set the cutting height.

13 Blade

The blade mows and mulches the grass.

14 Protective strips

The protective strips serve to protect the housing.

15 Filter cover

The filter cover covers the air filter.

16 Carrying handle

The carrying handle is used to transport the lawn mower.

17 Muffler

The muffler reduces the sound emission of the lawn mower.

18 Spark plug boot

The spark plug boot connects the ignition cable to the spark plug.

19 Spark plug

The spark plug ignites the fuel-air mixture in the engine.

20 Motor oil cap

The motor oil cap closes the opening for pouring in motor oil.

21 Fuel tank cap

The fuel tank cap closes the opening for filling gasoline.

22 Handlebar lever

The lever is used to adjust and fold down the handlebar.

Rating plate with serial number**3.2 Symbols**

Meaning of symbols that may be on the lawn mower:



Guaranteed sound power level in accordance with Directive 2000/14/EC in dB(A) for the purpose of comparing the sound emissions of products.



This symbol indicates the fuel tank cap.



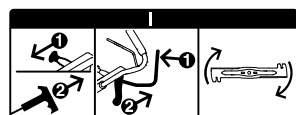
This symbol indicates the engine oil cap.



Do not dispose of the product with domestic waste.

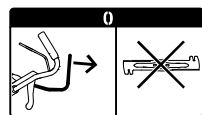


Setting the cutting height



To start the engine:
1 – Move the throttle lever to **I**
2 – Pull out the starter grip

To engage the blade:
1 – Press the control bar for mowing toward the handlebar
2 – Pull the lever for the blade brake clutch upward



To disengage the blade:
Release the control bar for mowing



Throttle in "Start" position: The engine can be started in this position.



Throttle in "Stop" position: The engine stops in this position.



To switch on self-propulsion:
Pull the control bar for self-propulsion toward the handlebar



The lawn mower moves at its fastest speed at this setting.



The lawn mower moves at its slowest speed in this position.

4 Safety Precautions**4.1 Warning symbols**

Meanings of the warning symbols on the lawn mower:



Follow the safety instructions and take the necessary precautions.



Read and understand the User Manual and keep it in a safe place for reference.



Follow the safety instructions concerning ejected objects and take the necessary precautions.



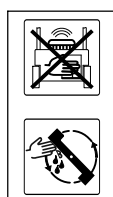
Keep hands and feet out of the reach of the blade.



Remove the spark plug boot before transport, storage, maintenance or repair.



Maintain a safe distance.



Do not reach into the working area of the blade when the engine is running.

4.2 Intended Use

The STIHL RM 655.1 VS lawn mower is designed for mowing and mulching grass.

! WARNING

- Using the lawn mower for purposes for which it is not designed may result in serious or fatal injuries or damage to property.
 - Always use the lawn mower as described in this User Manual and in the User Manual for the motor.

4.3 Requirements for the User

WARNING

- Uninstructed users cannot recognise or evaluate the dangers posed by the lawn mower. This may result in serious or fatal injury to the user or other people.



- ▶ Read, understand and keep the instruction manual.

- ▶ If passing on the lawn mower to another person: provide them with the lawn mower and engine instruction manuals also.
- ▶ Make sure that the user meets the following conditions:
 - The user is rested.
 - The user is physically, sensorily and mentally capable of operating the lawn mower and working with it. If the user is physically, sensorily or mentally impaired, the machine must only be used under supervision or following instruction by a responsible person.
 - The user can recognise and evaluate the dangers posed by the lawn mower.
 - The user is aware that they are responsible for accidents and damage.
 - The user is of legal age or the user is being trained under supervision in a profession in accordance with national regulations.
 - The user has received instruction from a STIHL specialist dealer or a competent person before using the lawn mower for the first time.
 - The user is not impaired by alcohol, medicines or drugs.
- ▶ If anything is unclear: consult a STIHL specialist dealer.

4.4 Clothing and equipment

WARNING

- Objects can be thrown at high speed during operation. This may result in injury to the user.
 - ▶ Wear long pants made of robust material.
- Noise is generated during operation. Noise can damage your hearing.
 - ▶ Wear hearing protection.
- Dust may be whipped up during operation. Whipped up dust can damage the respiratory passages and cause allergic reactions.
 - ▶ If dust is generated: Wear a dust respirator mask.

- Inappropriate clothing can snag on wood, brush or the mower. Users not wearing suitable clothing may be seriously injured.
 - ▶ Wear close-fitting clothing.
 - ▶ Remove scarves and jewelry.
- The user can come into contact with the blade during cleaning and maintenance work. This may result in injury to the user.
 - ▶ Wear protective gloves made from resistant material.
 - ▶ Wear sturdy, closed-toed footwear with non-slip soles.
- Wearing unsuitable footwear may cause the user to slip. This may result in injury to the user.
- Material particles may be ejected when sharpening the blade. This may result in injury to the user.
 - ▶ Wear close-fitting safety glasses. Suitable protective glasses tested in accordance with European standard EN 166, EN ISO 16321 or in accordance with national standards and bearing the corresponding label are available from retailers.
 - ▶ Wear protective gloves made from resistant material.

4.5 Work Area and Surroundings

WARNING

- Bystanding people, children and animals cannot recognise or evaluate the dangers posed by the lawn mower and objects thrown up by the machine. This may result in serious injury to bystanding people, children and animals and damage to property.



- ▶ Keep bystanding people, children and animals out of the work area.
- ▶ Maintain a distance from objects.
- ▶ Do not leave the lawn mower unattended.
- ▶ Make sure that children cannot play with the lawn mower.
- Hot exhaust gases are emitted from the muffler when the engine is running. Hot exhaust gases may ignite easily inflammable materials and cause fires.
 - ▶ Keep the exhaust gas flow away from easily inflammable materials.

4.6 Safe Condition


4.6.1 Lawn mower



The lawn mower is in a safe condition if the following points are observed:

- The lawn mower is not damaged.

- There is no fuel leaking from the lawn mower.
- The fuel tank cap is closed.
- There is no motor oil leaking from the lawn mower.
- The motor oil cap is closed.
- The lawn mower is clean.
- The controls are working properly and have not been modified.
- For mowing and if the mown grass is to be collected in the grass catcher box: Make sure the grass catcher box is correctly attached.
- For mowing and if the mown grass is to be discharged to the rear: Make sure the grass catcher box is detached and the discharge flap is closed.
- For mulching: Make sure the mulching insert is installed, the grass catcher box is detached and the discharge flap is closed.
- The blade is correctly installed.
- Original STIHL accessories for this lawn mower are correctly attached.
- Spring-loaded devices are undamaged and function properly.
- The engine cuts out when the control bar for mowing is released.



WARNING

- If not in a safe condition, components may no longer operate correctly, safety devices may be disabled and fuel leakage may occur. Persons may be seriously injured or killed.
 - ▶ Work only with an undamaged lawn mower.
 - ▶ If fuel is leaking from the lawn mower: Do not use the lawn mower and contact a STIHL authorized dealer for assistance.
 - ▶ Close the fuel tank cap.
 - ▶ If motor oil is leaking from the lawn mower: Do not use the lawn mower and contact a STIHL authorized dealer for assistance.
 - ▶ Close the motor oil cap.
 - ▶ If the lawn mower is dirty: Clean the lawn mower.
 - ▶ Do not manipulate the lawn mower and its safety systems.
 - ▶ Do not manipulate the lawn mower in a way that modifies the performance or speed of the motor.
 - ▶ If the controls do not function properly: Do not use the lawn mower.
 - ▶ Spring-loaded devices may release stored energy.
 - ▶ For mowing and if the cut grass is to be collected in the grass catcher box: Make sure to attach the grass catcher box as described in this User Manual,  6.3.2.

- ▶ For mulching: Make sure to insert the mulching insert as described in this User Manual,  6.2.2.
- ▶ Install the blade as described in this User Manual,  16.2.2.
- ▶ Attach original STIHL accessories for this lawn mower as described in this User Manual or in the User Manual for the accessories.
- ▶ Never insert objects in the lawn mower's openings.
- ▶ Have worn or damaged warning signs replaced by a STIHL authorized dealer.
- ▶ If you are unsure: Contact a STIHL authorized dealer.

4.6.2 Blade

The blade is in safe condition when the following conditions are met:

- The blade and attachments are undamaged.
- The blade is not deformed.
- The blade is correctly attached.
- The blade is correctly sharpened.
- The blade is burr-free.
- The blade is correctly balanced.
- The minimum thickness and minimum width of the blade are not fallen below,  19.2.
- The sharpening angle is observed,  19.2.

WARNING

- In unsafe condition, blade parts may come loose and be expelled. This may result in serious injury to people.
 - ▶ Use an undamaged blade and attachments.
 - ▶ Attach the blade correctly.
 - ▶ Sharpen the blade correctly.
 - ▶ If the minimum thickness or minimum width is fallen below: replace the blade.
 - ▶ Have the blade balanced by a STIHL specialist dealer.
 - ▶ If anything is unclear: consult a STIHL specialist dealer.

4.7 Fuel and Refuelling

WARNING

- The fuel used for this lawn mower is petrol. Petrol is extremely inflammable. If petrol comes into contact with an open flame or hot objects, it may cause fires or explosions. This may result in serious or fatal injury to people and damage to property.
 - ▶ Protect petrol from heat and fire.
 - ▶ Do not spill petrol.
 - ▶ If petrol is spilled: wipe up the petrol with a cloth and wait until all parts of the lawn

mower are dry before attempting to start the engine.

- ▶ Do not smoke.
- ▶ Do not refuel in the vicinity of flames.
- ▶ Before refilling the tank, stop the engine and allow it to cool.
- ▶ If the tank needs to be emptied: do this out of doors.
- ▶ Start the engine at least 3 m away from the refuelling site.
- ▶ Never store the lawn mower with petrol in the tank inside a building.
- Breathing in petrol fumes may result in poisoning.
 - ▶ Do not breathe in petrol fumes.
 - ▶ Refuel in a well-ventilated place.
- The lawn mower warms up while working. The petrol expands and overpressure may occur in the fuel tank. Petrol may gush out when the fuel tank cap is opened. The gushing petrol may ignite. This may result in serious injury to the user.
 - ▶ Allow the lawn mower to cool down before opening the fuel tank cap.
- Clothing that comes into contact with petrol is highly inflammable. This may result in serious or fatal injury to people and damage to property.
 - ▶ If clothing comes into contact with petrol: change clothing.
- Petrol poses a risk to the environment.
 - ▶ Do not spill fuel.
 - ▶ Dispose of petrol in accordance with regulations and in an environmentally acceptable way.
- If petrol comes into contact with the skin or eyes, this may cause irritation.
 - ▶ Avoid contact with petrol.
 - ▶ In the event of contact with the skin: wash the affected areas with plenty of soap and water.
 - ▶ In the event of contact with the eyes: rinse the eyes with plenty of water for at least 15 minutes and seek medical attention.
- The lawn mower's ignition system generates sparks. Sparks may escape and cause fires and explosions in highly inflammable or explosive environments. This may result in serious or fatal injury to people and damage to property.
 - ▶ Use the spark plugs described in the engine instruction manual.
 - ▶ Screw in the spark plug and tighten.
 - ▶ Press on the spark plug socket firmly.

- The lawn mower may be damaged if it is refuelled with petrol that is not suitable for the engine.
 - ▶ Use fresh, good-quality unleaded petrol.
 - ▶ Observe the specifications in the engine instruction manual.

4.8 Working

WARNING

- The user may lose control of the lawn mower if they do not start the engine correctly. This may result in serious injury to the user.
 - ▶ Start the engine as described in this User Manual.
- In certain situations, the user may no longer be able to concentrate on their work. This may result in the user stumbling, falling and suffering serious injury.
 - ▶ Work calmly and methodically.
 - ▶ Only mow when visibility is good. If the light and visibility conditions are poor: Do not use the lawn mower.
 - ▶ Use the lawn mower on your own.
 - ▶ Watch out for obstacles.
 - ▶ Do not tilt the lawn mower.
 - ▶ Work standing on the ground and keep your balance.
 - ▶ If you start feeling fatigue: Take a break.
 - ▶ When mowing a slope: mow across the slope.
 - ▶ Do not work on slopes with a gradient greater than 25° (46.6%).
 - ▶ Use the lawn mower with particular care when working near slopes, terraces, ditches, landfills and embankments.
 - ▶ Plan your working times so as to avoid working under severe physical strain for longer periods.
- Exhaust fumes are produced when the engine is running. Breathing in exhaust gas can have toxic effects. Breathing in exhaust gas can have toxic effects.
 - ▶ Avoid inhaling exhaust fumes.
 - ▶ Use the lawn mower in a well-ventilated place.
 - ▶ In the event of nausea, headache, visual disturbances, problems with hearing or dizziness: Stop work and seek medical advice.
- The user's ability to hear and assess noises is restricted when wearing hearing protection with the engine running.
 - ▶ Work calmly and methodically.
- When the starter cord retracts quickly, the user's hand and arm will be pulled faster towards the engine than they can release the

cord. This may lead to fractures, bruises or sprains.

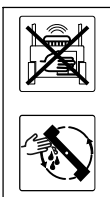
- ▶ First, pull the starter cord slowly until you sense a noticeable resistance, then pull the cord quickly out to an arm's length to prevent a kickback.
- The rotating blade may cut the user. This may result in serious injury to the user.



- ▶ Pull off the spark plug boot.



- ▶ Keep hands and feet out of the reach of the blade.
- ▶ Do not touch the rotating blade.
- ▶ If the blade is blocked by an object: Shut off the engine. Only then remove the object.



Do not reach into the working area of the blade when the engine is running.

- If working without self-propulsion when mowing, self-propulsion may unintentionally be engaged, and the lawn mower may start moving. This may result in serious injury to people and damage to property.
 - ▶ Only press the control bar for self-propulsion if self-propulsion is to be engaged.
- If the lawn mower starts behaving differently or in an unusual way while operating, the lawn mower may be in an unsafe condition. This may result in serious injury to people and damage to property.
 - ▶ Stop work and consult a STIHL authorized dealer.
- The lawn mower may cause vibrations in operation.
 - ▶ Wear protective gloves.
 - ▶ Take breaks.
 - ▶ If signs of a circulatory disorder occur: Consult a doctor.



- ▶ Remove foreign objects such as stones, sticks, wires, toys or other foreign objects from the working area. Mark concealed objects that cannot be removed.
- When the control bar for mowing is released, the blade continues to turn for a short time. People may suffer serious injuries as a result.



- ▶ Wait for the blade to stop moving.
- ▶ Do not detach the grass catcher box until the blade stops turning.
- ▶ Only remove the mulching insert when the blade has stopped turning.

- Sparks may be produced if the rotating blade hits a hard object. Sparks can cause fires in a flammable environment. Persons may be seriously or fatally injured, and property may be damaged.
 - ▶ Do not use in a flammable environment.
- Hard objects hitting the rotating blade can damage the lawn mower.
 - ▶ If a hard object hits the rotating blade, switch off the engine, remove the batteries and check the lawn mower for damage.
 - ▶ If the lawn mower is damaged: Contact a STIHL authorized dealer.
- The lawn mower may unintentionally roll away if it is stopped on a sloping surface. People may be injured or property may be damaged.
 - ▶ Only let go of the lawn mower if it is on a level surface and cannot roll away by itself.
- If objects are attached to the handlebar, the additional weight may cause the lawn mower to tip over. People may be injured or property may be damaged.
 - ▶ Do not attach objects to the handlebar.

! DANGER

- When working near live wires, the blade may come into contact with live wires and damage them. This may result in serious or fatal injury to the user.
 - ▶ Do not work near live wires.
- If the user is working during a thunderstorm, they may be struck by lightning. This may result in serious or fatal injury to the user.
 - ▶ Do not work if there is a thunderstorm.
- Working in the rain may cause the user to slip. This may result in serious or fatal injury to the user.
 - ▶ Do not work when it is raining.

4.9 Transporting

! WARNING

- The lawn mower may tip over or move during transport. This may result in injury to people and damage to property.
 - ▶ Stop the engine.



- ▶ Wait until the blade is no longer turning.



- ▶ Detach the spark plug socket.

- ▶ Secure the lawn mower on a suitable load floor with lashing straps, belts or a net so it cannot tip over and move.
- The muffler and engine may be hot after the engine has been running. This may result in the user burning themselves when transporting the machine.
 - ▶ Push the lawn mower.
- The lawn mower is heavy. Attempting to carry the lawn mower without assistance may result in injury to the user.
 - ▶ Wear protective gloves.
 - ▶ The lawn mower must be carried by two people.
- During transport, petrol may leak and cause contamination and damage.
 - ▶ Push the lawn mower.
 - ▶ Transport the machine without petrol in it.

4.10 Storing

⚠ WARNING

- Children cannot recognise or evaluate the dangers posed by the lawn mower. There is a risk of serious injury to children.
 - ▶ Stop the engine.
 - ▶ Keep the lawn mower out of reach of children.
- Moisture may cause corrosion of metal components. This may result in damage to the lawn mower.
 - ▶ Keep the lawn mower clean and dry.
- If the lawn mower is kept on a sloping surface, it may unintentionally roll away. This may result in injury to people and damage to property.
 - ▶ The lawn mower should only be kept on level surfaces.

4.11 Cleaning, maintenance and repair

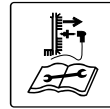
⚠ WARNING

- Having the engine running during cleaning, maintenance or repair may result in serious injury to people and damage to property.
 - ▶ Shut off the engine.
 - ▶ Wait for the blade to stop moving.



- ▶ Pull off the spark plug boot.

- The self-propulsion may be unintentionally engaged if the engine is running during cleaning, maintenance or repair. This may result in serious injury to people and damage to property.
 - ▶ Shut off the engine.



- ▶ Pull off the spark plug boot.

- The muffler and engine may be hot after the engine has been running. This can result in burn injuries.
 - ▶ Wait until the muffler and engine have cooled down.
- Abrasive cleaning agents, using a jet of water or sharp items for cleaning may result in damage to the lawn mower or the blade. If the lawn mower or blade is not cleaned correctly, components may no longer operate correctly and safety devices may be disabled. People may suffer serious injuries as a result.
 - ▶ Clean the lawn mower and blade as described in this User Manual, 15.2.
- The lawn mower is equipped with a blade brake clutch (BBC). After releasing the control bar for mowing, the blade comes to a stop within 3 seconds. The engine continues to run.
 - ▶ Switch off the engine and disconnect the spark plug boot before cleaning, servicing or repairing the lawn mower.
- If the lawn mower or blade is not maintained or repaired as described in this User Manual, components may no longer operate correctly and safety devices may be disabled. Persons may be seriously injured or killed.
 - ▶ Replace worn or damaged parts.
 - ▶ Maintain or repair the lawn mower as described in this User Manual.
 - ▶ Service the blade as described in this User Manual.
- Users may cut themselves on sharp cutting edges while cleaning, servicing or repairing the blade. This may result in injury to the user.
 - ▶ Wear protective gloves made from resistant material.
- The blade may become hot during sharpening. There is a risk of burn injuries.
 - ▶ Wait until the blade has cooled down.
 - ▶ Wear protective gloves made from resistant material.

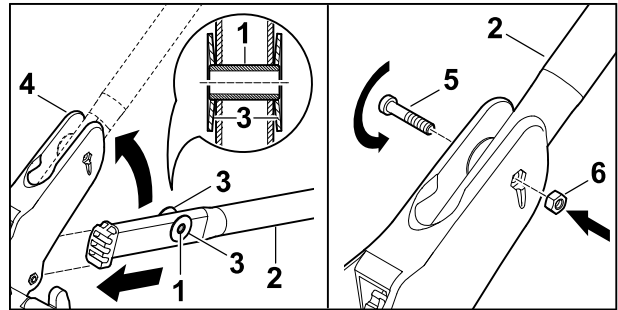
5 Preparing the Lawn Mower for Operation

5.1 Preparing the lawn mower for operation

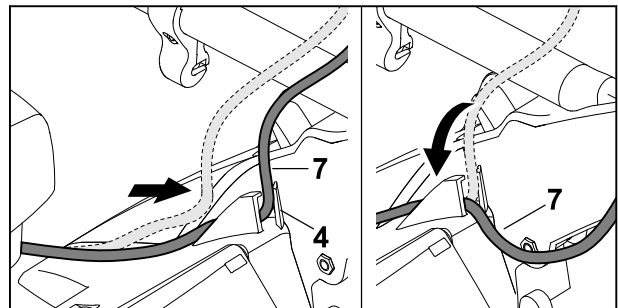
The following steps must be performed before commencing work:

- ▶ Remove the packaging material and transport locks.
- ▶ Ensure that the following components are in a safe condition:
 - Lawn mower, [4.6.1](#).
 - Blades, [4.6.2](#).
- ▶ Clean the lawn mower, [15.2](#).
- ▶ Check the blade, [10.2](#).
- ▶ Fill with engine oil, [6.4](#).
- ▶ Attach the handlebar, [6.1](#).
- ▶ Fold open the handlebar, [8.1](#).
- ▶ Adjust the handlebar, [8.2](#).
- ▶ Refuel the lawn mower, [7](#).
- ▶ If mowing and the grass is to be collected in the grass catcher box:
 - ▶ Remove the mulching insert, [6.2.1](#).
 - ▶ Attach the grass catcher box, [6.3.2](#).
- ▶ If mowing and the mown grass is to be ejected to the rear:
 - ▶ Remove the mulching insert, [6.2.1](#).
 - ▶ Detach the grass catcher box, [6.3.3](#).
- ▶ If mulching:
 - ▶ Detach the grass catcher box, [6.3.3](#).
 - ▶ Insert the mulching insert, [6.2.2](#).
- ▶ Set the cutting height, [11.2](#).
- ▶ Check the controls, [10.1](#).
- ▶ If you cannot carry out these steps: Do not use the lawn mower and instead consult a STIHL authorized dealer.

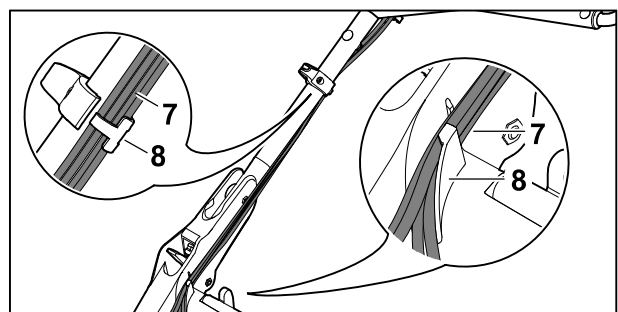
- ▶ Press the sleeve (1) into the hole on the handlebar (2).
- ▶ Insert the disk springs (3) with their concave side facing inward onto the sleeve (1).



- ▶ Hold the sleeve (1) and the disk springs (3) and insert them together with the handlebar (2) into the handlebar bracket (4) from below.
- ▶ Fold open the handlebar (2) upward until the holes of the handlebar bracket (4) and the sleeve (1) align with each other.
- ▶ Push the screw (5) through the holes in the handlebar bracket (4) and the sleeve (1) in the handlebar (2).
- ▶ Place the nut (6) into the notch in handlebar bracket (4).
- ▶ Tighten the screw (5).
- ▶ Fold down the handlebar.



- ▶ Insert the cables (7) into the guide on the handlebar bracket (4).

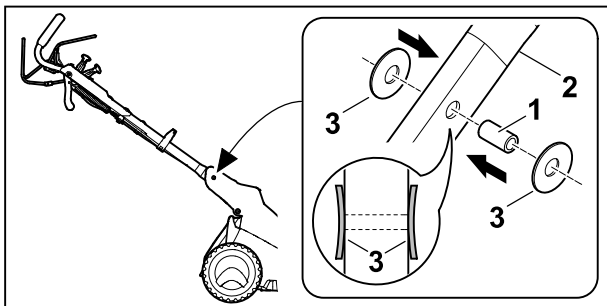


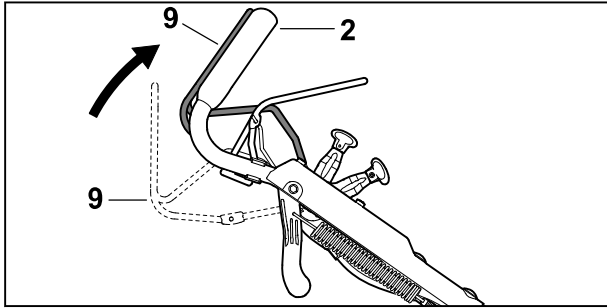
- ▶ Insert all cables (7) into the cable guide (8).
- ▶ Open the handlebar.

6 Assembling the Lawn Mower

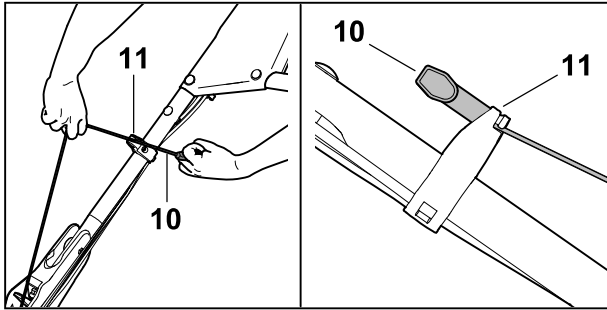
6.1 Attaching the handlebar

- ▶ Shut off the engine.
- ▶ Pull off the spark plug boot.
- ▶ Place the lawn mower on a level surface.





- ▶ Press the control bar for mowing (9) toward the handlebar (2) and hold it there.



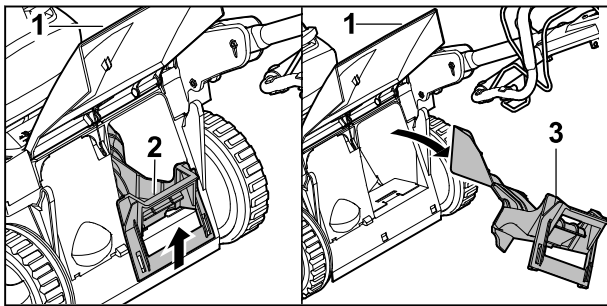
- ▶ Pull the starter grip (10) slowly in the direction of the cable guide (11).
- ▶ Attach the starter grip (10) to the cable guide (11).
- ▶ Release the control bar for mowing (9).
- ▶ Attach the spark plug boot.

The handlebar does not need to be removed again.

6.2 Removing and Inserting the Mulch Insert

6.2.1 Removing the mulching insert

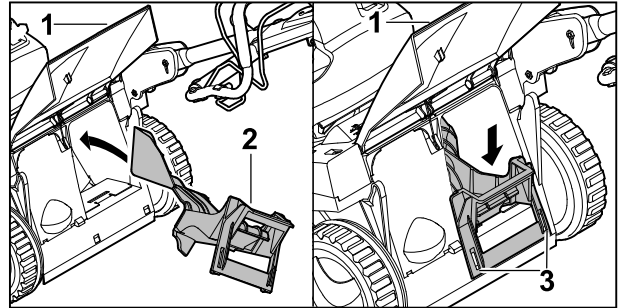
- ▶ Shut off the engine.
- ▶ Place the lawn mower on a level surface.



- ▶ Open the discharge flap (1) and hold it open.
- ▶ Lift the detent catch (2).
- ▶ Pull the mulch insert (3) diagonally upward out of the discharge chute.
- ▶ Close the discharge flap (1).

6.2.2 Inserting the mulching insert

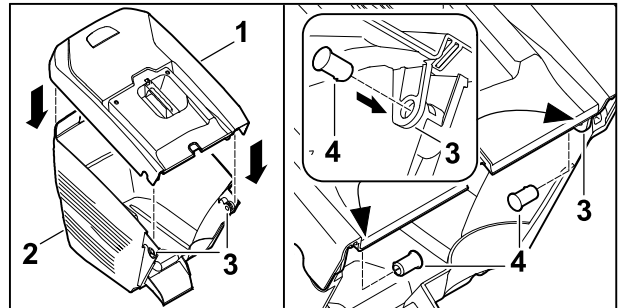
- ▶ Shut off the engine.
- ▶ Place the lawn mower on a level surface.



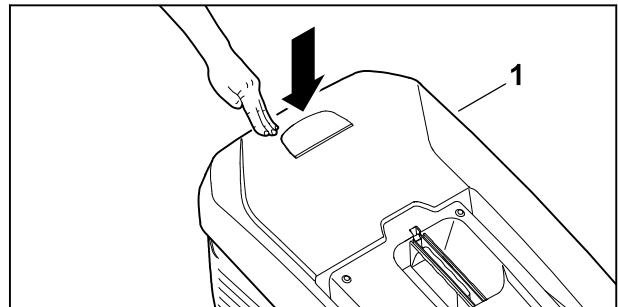
- ▶ Open the discharge flap (1) and hold it open.
- ▶ Insert the mulch insert (2) into the discharge chute diagonally from above.
- ▶ Turn the mulch insert (2) to horizontal, press it down until it audibly engages with both retaining lugs (3) in the housing.
- ▶ Close the discharge flap (1).

6.3 Assembling, Attaching and Detaching the Grass Catcher Box

6.3.1 Assembling the grass catcher box



- ▶ Place the top part (1) of the grass catcher box on the bottom part (2) of the grass catcher box.
- ▶ Press the pins (4) through the openings (3) from the inside.

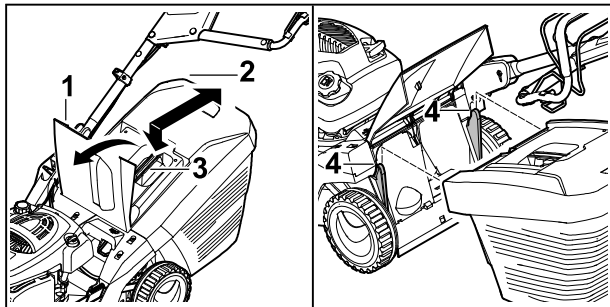


- ▶ Press the upper part of the grass catcher box (1) downward.
The upper part (1) of the grass catcher box audibly engages.

6.3.2 Attaching the grass catcher box

- ▶ Disengage the blade clutch.
- ▶ Place the lawn mower on a level surface.

- ▶ If the mulching insert is inserted: Remove the mulching insert.



- ▶ Open the discharge flap (1) and hold it open.
- ▶ Take hold of the grass catcher box (2) by its handle (3) and attach it to the notches (4).
- ▶ Place the discharge flap (1) on the grass catcher box (2).

6.3.3 Detaching the Grass Catcher Box

- ▶ Stop the engine.
- ▶ Place the lawn mower on a level surface.
- ▶ Open the discharge flap and hold it open.
- ▶ Remove the grass catcher box upwards by the handle.
- ▶ Close the discharge flap.

6.4 Adding Engine Oil

The engine oil lubricates and cools the engine.

The engine oil specification and capacity can be found in the engine instruction manual.

NOTICE

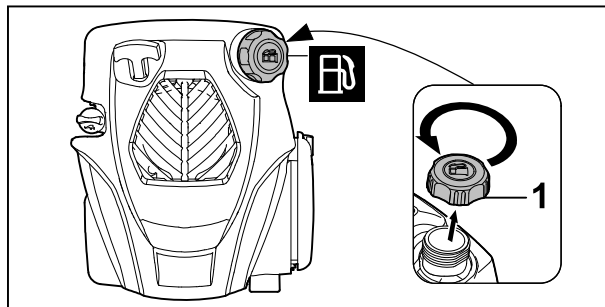
- The lawn mower does not contain any engine oil on delivery. Starting the engine with no or too little engine oil may damage the lawn mower.
 - ▶ Always check the engine oil level before starting and if necessary top up.
- ▶ Add the engine oil as described in the engine instruction manual.

7 Refuelling the Lawn Mower

7.1 Refueling the lawn mower

NOTICE

- The lawn mower can be damaged if fueled with an incorrect fuel.
 - ▶ Pay attention to the User Manual for the motor.
- ▶ Shut off the engine.
- ▶ Place the lawn mower on a level surface.
- ▶ Use a damp cloth to clean the area around the fuel tank cap.

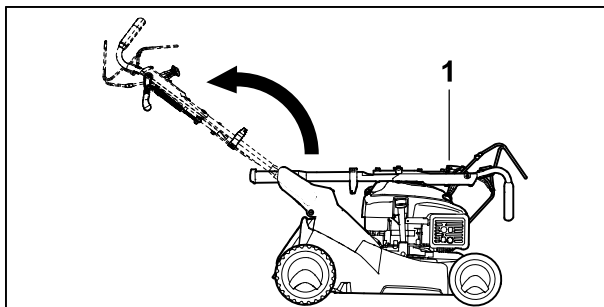


- ▶ Turn the fuel tank cap (1) counterclockwise until it can be removed.
- ▶ Remove the fuel tank cap.
- ▶ Use a suitable filling aid to add fuel so that the fuel level stops at least 15 mm below the fuel tank brim.
- ▶ Install the fuel tank cap on the tank.
- ▶ Turn the tank cap clockwise and tighten it down firmly by hand.
The fuel tank is closed.

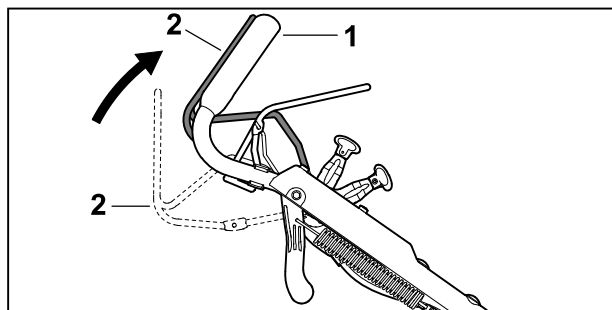
8 Adjusting the Lawn Mower for the User

8.1 Folding open the handlebar

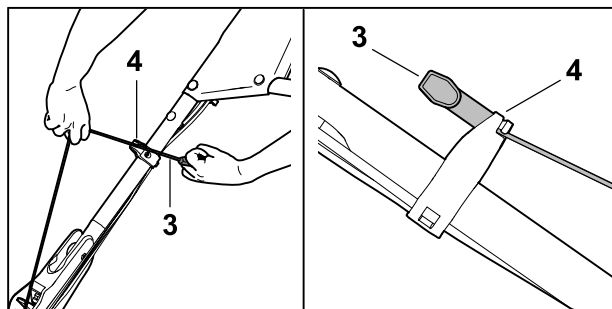
- ▶ Shut off the engine.
- ▶ Pull off the spark plug boot.
- ▶ Place the lawn mower on a level surface.



- ▶ Raise the handlebar (1).
- ▶ Fold open the handlebar (1) and ensure that the cables are not pinched.
- ▶ Allow the handlebar (1) to snap completely into position.
The handlebar is firmly attached to the lawn mower.

Attaching the starter rope

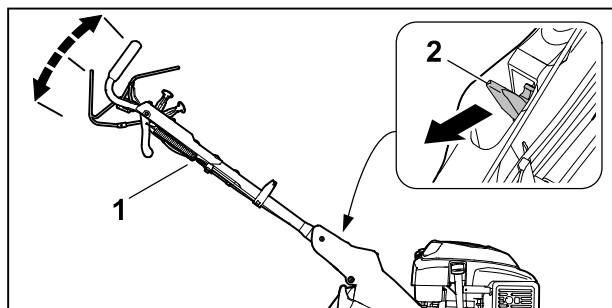
- ▶ Press the control bar for mowing (2) toward the handlebar (1) and hold it there.



- ▶ Pull the starter grip (3) slowly in the direction of the cable guide (4).
- ▶ Attach the starter grip (3) to the cable guide (4).
- ▶ Release the control bar for mowing (2).
- ▶ Attach the spark plug boot.

8.2 Adjusting the handlebar

- ▶ Shut off the engine.
- ▶ Pull off the spark plug boot.
- ▶ Place the lawn mower on a level surface.



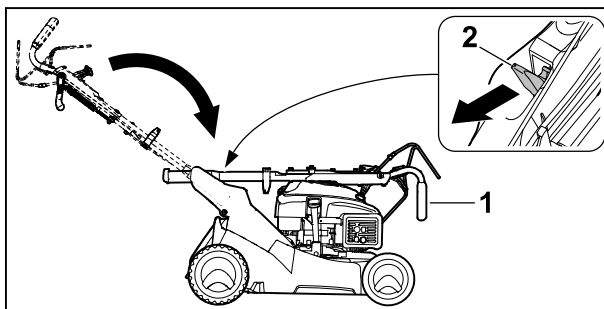
- ▶ Hold the handlebar (1) securely.
- ▶ Depress the lever (2) and keep it pressed.
- ▶ Set the handlebar (1) to the desired position.
- ▶ Release the lever (2) and ensure that the handlebar fully engages again.
- ▶ Attach the spark plug boot.

The handlebar can be set to 3 heights.

8.3 Folding down the handlebar

The handlebar can be folded down for space-saving transport and storage.

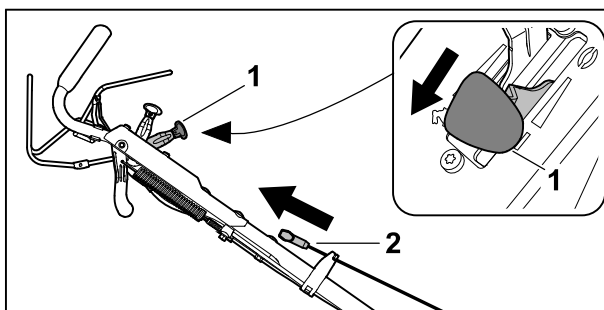
- ▶ Shut off the engine.
- ▶ Pull off the spark plug boot.
- ▶ Place the lawn mower on a level surface.
- ▶ Disengage the starter grip from the Bowden cable guide and guide it slowly in the direction of the engine.



- ▶ Hold the handlebar (1) securely.
- ▶ Depress the lever (2) and keep it pressed.
- ▶ Fold down handlebar (1).
- ▶ Release the lever (2).
- ▶ Attach the spark plug boot.

9 Starting and Stopping the Engine**9.1 Starting the engine**

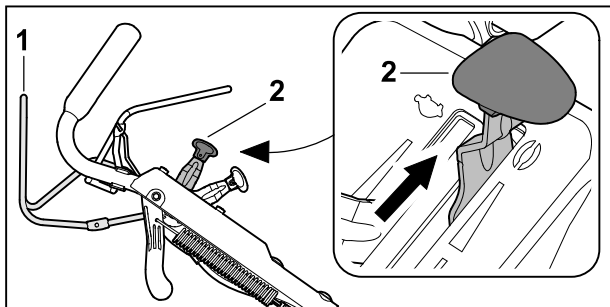
- ▶ Place the lawn mower on a level surface.



- ▶ Move the lever (1) to the Start position.
- ▶ Pull out the starter grip (2) slowly with your right hand until you feel noticeable resistance.
- ▶ Pull the starter grip (2) quickly and allow the starter rope to rewind several times until the engine begins to run.
- ▶ If the engine fails to start: See the User Manual for the engine.

9.2 Switching off the engine

- ▶ Place the lawn mower on a level surface.



- ▶ Release the control bar (1).
The blade comes to a standstill within 3 seconds.
- ▶ Move the lever (2) to the Stop position.
The engine stops.
- ▶ Leave the user position.

10 Checking the Lawn Mower

10.1 Checking the controls

Control bar for mowing and control bar for self-propulsion

- ▶ Shut off the engine.
- ▶ Pull the control bar for mowing and the control bar for self-propulsion all the way in the direction of the handlebar and release them again.
- ▶ If the control bar for mowing or the control bar for self-propulsion is stiff or does not return to its initial position: Do not use the lawn mower and instead consult a STIHL authorized dealer.
The control bar for mowing or the control bar for self-propulsion is defective.

Blade brake clutch

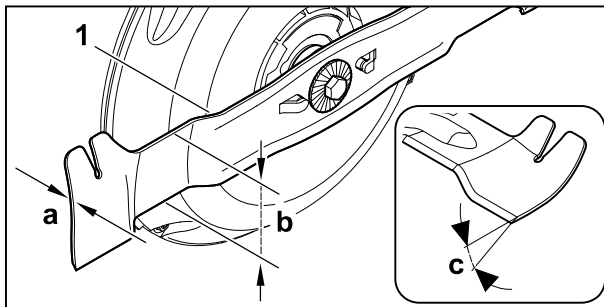
- ▶ Start the engine.

Repeat the following steps 3 times:

- ▶ Engage the blade. 11.4.1
This produces an audible wind noise.
- ▶ Disengage the blade clutch. 11.4.2
The blade comes to a standstill within 3 seconds, and the wind noise stops.
- ▶ If the blade does not come to a standstill within 3 seconds, or if you can still hear the wind noise: Do not use your lawn mower and instead contact your STIHL authorized dealer.
The blade brake clutch is defective.

10.2 Checking the blade

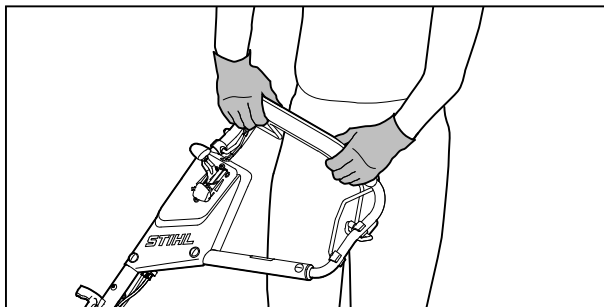
- ▶ Shut off the engine.
- ▶ Pull off the spark plug boot.
- ▶ Stand the lawn mower upright, 15.1.



- ▶ Measure the following parameters at the blade (1):
 - Thickness a
 - Width b
 - Sharpening angle c
- ▶ If the minimum thickness or minimum width falls short: Replace the cutting blade, 19.2.
- ▶ If the sharpening angle is not correct: Sharpen the cutting blade, 19.2.
- ▶ If you are unsure: Contact a STIHL authorized dealer.

11 Operating the Lawn Mower

11.1 Holding and guiding the lawn mower



- ▶ Hold the handlebar firmly with both hands with your thumbs wrapped around the handlebar.

11.2 Setting the cutting height

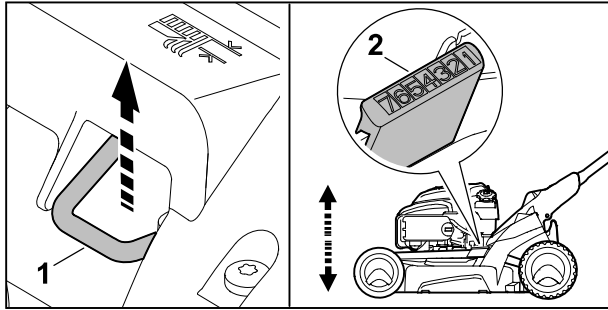
7 different cutting heights can be selected:

- 25 mm = Position 1
- 35 mm = Position 2
- 45 mm = Position 3
- 55 mm = Position 4
- 65 mm = Position 5
- 75 mm = Position 6
- 85 mm = Position 7

The positions are indicated on the lawn mower.

Setting the cutting height

- ▶ Shut off the engine.
The cutting blade must not be turning.
- ▶ Place the lawn mower on a level surface.



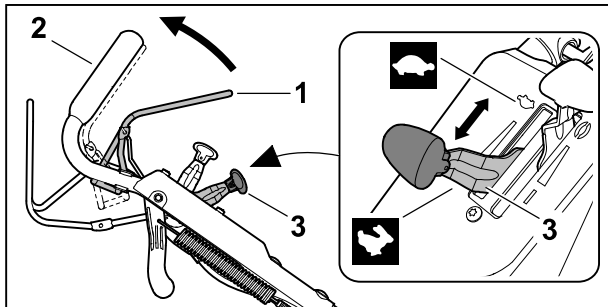
- Pull the lever (1) upward and hold it there.
- Move the lawn mower to the desired position by lifting and lowering it.
The current cutting height can be read off at the cutting height indicator (2).
- Release the lever (1).
The lawn mower engages.

11.3 Switching the Drive On and Off

11.3.1 Switching on self-propulsion

NOTICE

- To prevent damage to the machine, press the lever for self-propulsion only when the engine is running.
- Place the lawn mower on a level surface.
- Start the engine.



- Pull the control bar (1) all the way up to the handlebar (2) and hold it so that your thumb is wrapped around the handlebar.
The lawn mower starts moving.

Increasing the travel speed

- Push the lever (3) forward toward during travel.

Reducing the travel speed

- Push the lever (3) back toward during travel.

11.3.2 Disengaging Self-propulsion

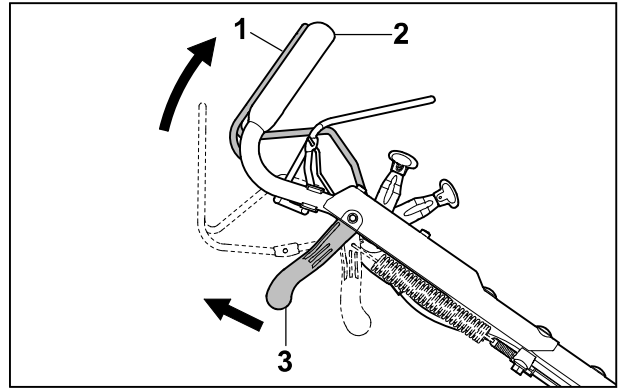
- Release the control bar for self-propulsion.
- Wait until the lawn mower comes to a standstill.

11.4 Blade brake clutch

11.4.1 Engaging the blade clutch

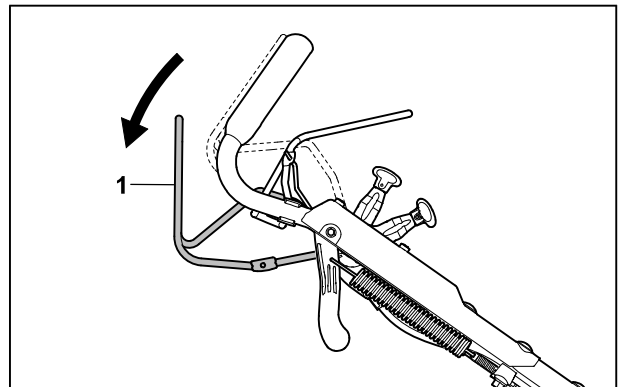
The lawn mower is equipped with a blade brake clutch. After releasing the control bar for mowing, the blade must come to a stop within a few seconds; however, the engine may continue to run. As a result, the user can continue to use the self-propulsion or empty the grass catcher box without having to restart the engine afterward.

To engage the blade clutch:



- Press the control bar for mowing (1) toward the handlebar (2) and hold it pressed and pull the lever for the blade brake clutch (3) upward.

11.4.2 Disengaging the blade clutch

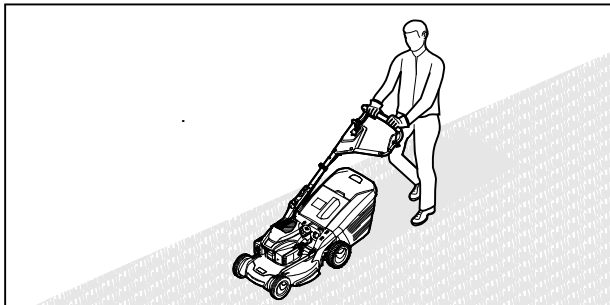


- Release the control bar for mowing (1).
The blade is then disengaged and comes to a standstill within 3 seconds. The engine continues running.

11.5 Mowing and mulching

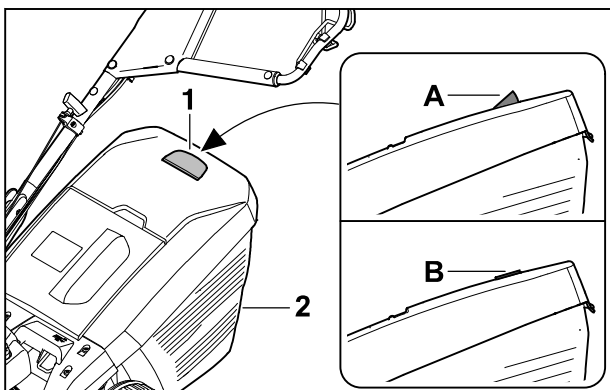
The lawn mower is equipped with a multi-blade and can be used for mowing and mulching.

- For mowing, remove the pre-installed mulching insert, 6.2.1.



- If working with the self-propulsion engaged: Move the lawn mower forward in a controlled manner.
- If working with the self-propulsion disengaged: Push the lawn mower forward slowly and in a controlled manner.

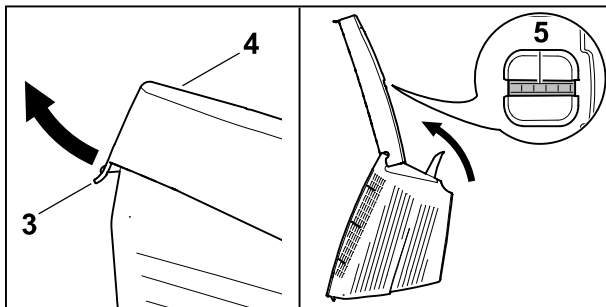
11.6 Emptying the grass catcher box



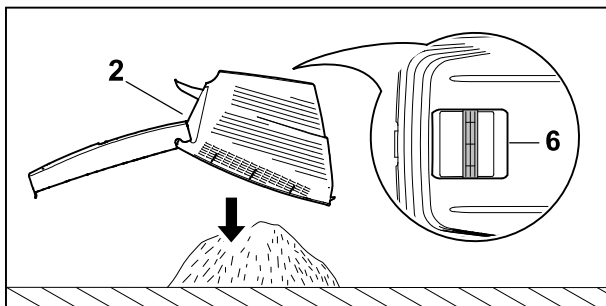
The flow of air generated by the blade raises the level indicator (1, A). When the grass catcher box is full, the air flow stops, and the level indicator (1, B) drops to its resting state. This is an indication that the grass catcher box (2) needs to be emptied.

The functionality of the level indicator (1) is restricted if the flow of air is impaired. External influences such as wet, dense or high grass, low cutting height, dirt or the like can impair the flow of air and the functionality of the level indicator (1).

- If the level indicator (1) drops to its resting state: Release the control bar for mowing. The blade is then disengaged and comes to a standstill within 3 seconds.
- Detach the grass catcher box (2).



- Open the locking tab (3).
- Fold open the upper part (4) of the grass catcher box by the handle (5) and hold it there.



- Hold the grass catcher box (2) with your other hand on the lower handle (6) and empty it.
- Attach the grass catcher box (2).

12 After Finishing Work

12.1 After Finishing Work

- Stop the engine.
- If the lawn mower is wet: allow the lawn mower to dry.
- Clean the lawn mower.

13 Transporting

13.1 Transporting the lawn mower

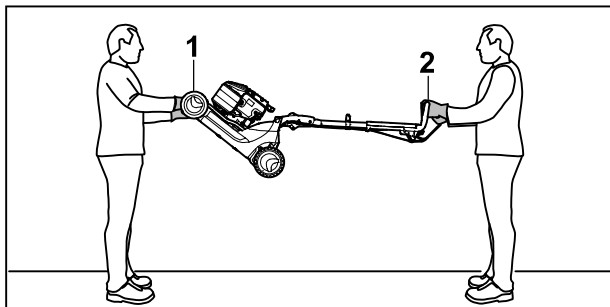
- Shut off the engine.
The cutting blade must not be turning.
- Pull off the spark plug boot.

Pushing the lawn mower

- Push the lawn mower forward slowly and in a controlled manner.

Carrying the lawn mower

- Wear protective gloves.
- Detach the grass catcher box.



- ▶ One person uses both hands on the carrying handle (1) to hold the lawn mower, while a second person uses both hands on the handlebar (2) to hold the lawn mower.
- ▶ The lawn mower must be lifted and carried by two people.

Transporting the lawn mower in a vehicle

- ▶ Secure the lawn mower upright so that the lawn mower does not tip over and cannot move.

14 Storing

14.1 Storing the Lawn Mower

- ▶ Stop the engine and allow it to cool down.
 - ▶ Detach the spark plug socket.
 - ▶ Store the lawn mower in accordance with the following conditions:
 - The lawn mower is out of reach of children.
 - The lawn mower is clean and dry.
 - The lawn mower cannot tip over.
 - The lawn mower cannot roll away.
- If the lawn mower is to be stored for longer than 3 months, also observe the following:
- ▶ Run the fuel tank empty.
 - ▶ Have the fuel tank cleaned by a STIHL specialist dealer.
 - ▶ Change the engine oil as described in the engine instruction manual.
 - ▶ Unscrew the spark plug and fill 3 ml of engine oil into the engine through the spark plug opening.
 - ▶ Pull out and return the starter handle a number of times.



WARNING

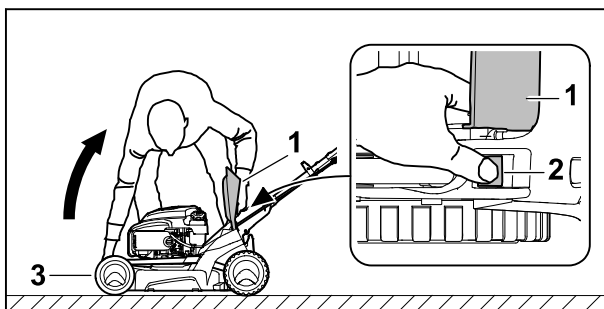
- Sparks may escape if the starter handle is pulled out while the spark plug socket is detached. Sparks can ignite escaping petrol fumes and cause fires and explosions. This may result in serious or fatal injury to people and damage to property.
 - ▶ Keep the spark plug socket away from the spark plug opening.

- ▶ Screw in the spark plug and tighten firmly.

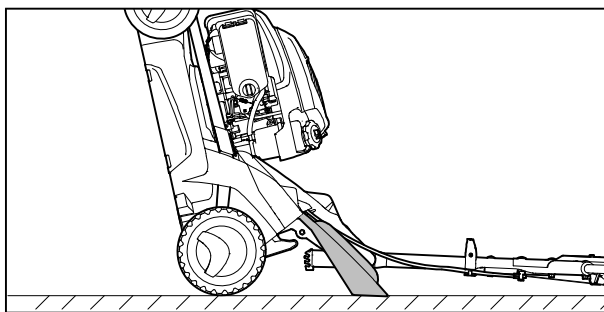
15 Cleaning

15.1 Standing the lawn mower upright

- ▶ Run the fuel tank empty.
The engine stops.
- ▶ Pull off the spark plug boot.
- ▶ Place the lawn mower on a level surface.
- ▶ Detach the starter grip from the cable guide.
- ▶ Remove the mulching insert, [6.2.1.](#)
- ▶ Detach the grass catcher box, [6.3.3.](#)
- ▶ Set the cutting height to the highest setting, [11.2](#)
- ▶ Set the handlebar to its lowest setting, [8.2.](#)



- ▶ Place yourself to the right of the machine.
- ▶ Open the discharge flap (1) and hold it open.
- ▶ Press down the lever (2) with your left hand and hold it there.
- ▶ Hold the lawn mower by the carrying handle (3) with your right hand and tilt it backward.



The lawn mower is stable and can be cleaned.

15.2 Cleaning the Lawn Mower

- ▶ Stop the engine.
- ▶ Allow the lawn mower to cool down.
- ▶ Detach the spark plug socket.
- ▶ Clean the lawn mower with a damp cloth.
- ▶ Clean the ventilation slots with a paintbrush.
- ▶ Upend the lawn mower.
- ▶ Clean the area around the blade and the blade with a stick, a soft brush or a damp cloth.
- ▶ Connect the spark plug socket.

NOTICE

- Using a high-pressure cleaner or a water jet for cleaning can damage the machine.
 - ▶ Do not clean the machine with a high-pressure cleaner or a water jet.

16 Maintenance

16.1 Maintenance Intervals

Maintenance intervals are dependent on the ambient conditions and the working conditions. STIHL recommends the following maintenance intervals:

Engine


- ▶ Maintain the engine as described in the engine instruction manual.

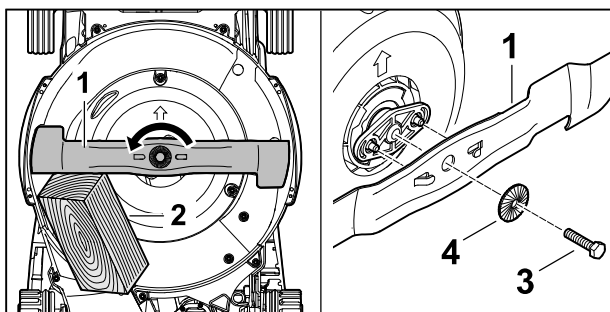
Lawn mower

- ▶ Have the lawn mower inspected annually by a STIHL specialist dealer.

16.2 Removing and Attaching the Blade


16.2.1 Removing the blade

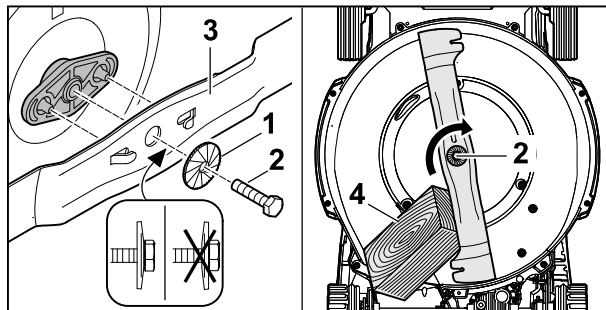
- ▶ Shut off the engine.
- ▶ Pull off the spark plug boot.
- ▶ Stand the lawn mower upright,  15.1.



- ▶ Chock the blade (1) with a piece of wood (2).
- ▶ Unscrew the screw (3) in the direction of the arrow and remove together with the washer (4).
- ▶ Remove the blades (1).
- ▶ Dispose of the screw (3) and the washer (4). Use a new screw and washer for installing the cutting blade (1).
- ▶ Attach the spark plug boot.

16.2.2 Installing the blade

- ▶ Shut off the engine.
- ▶ Pull off the spark plug boot.
- ▶ Stand the lawn mower upright,  15.1.
- ▶ Place the mowing deck on suitable, non-skid wooden supports.



- ▶ Place the new washer (1) with its convex side up on the new screw (2).
- ▶ Apply Loctite 243 threadlocking to the thread of the screw (2).
- ▶ Position the cutting blades (3) so that the raised areas on the contact area engage in the notches.
- ▶ Screw in the screw (2) together with the washer (1).
- ▶ Chock the blade (3) with a piece of wood (4).
- ▶ Tighten the screw (2) to a torque of 60–65 Nm.
- ▶ Attach the spark plug boot.

16.3 Sharpening and Balancing the Blade

Sharpening and balancing the blade correctly requires a lot of practice.



STIHL recommends having the blade sharpened and balanced by a STIHL specialist dealer.

The current addresses of the specialist dealers can be found under the respective STIHL country representative at www.stihl.com.



WARNING

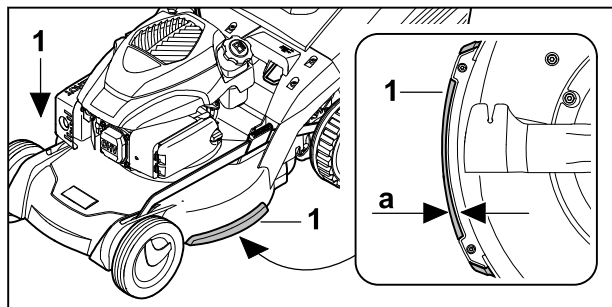
- The cutting edges of the blade are sharp. This may result in the user cutting themselves.
 - ▶ Wear protective gloves made from resistant material.

- ▶ Stop the engine.
- ▶ Detach the spark plug socket.
- ▶ Upright the lawn mower,  15.1.
- ▶ Remove the blade.
- ▶ Sharpen the blade. Observe the sharpening angle and cool the blade,  19.2. Bluing of the blade during sharpening is not permitted.
- ▶ Attach the blade.
- ▶ Connect the spark plug socket.
- ▶ If anything is unclear: consult a STIHL specialist dealer.

16.4 Checking the protective strips

- ▶ Shut off the engine.
- ▶ Pull off the spark plug boot.

- Stand the lawn mower upright,  15.1.



- To measure the thickness of the protective strips (1):
 - Minimum thickness a: 1 mm

- If thickness is below the minimum: Have the protective strips replaced by a STIHL authorized dealer.

17 Repairing

17.1 Repairing the Lawn Mower

The user should not repair the lawn mower or blade themselves.

- If the lawn mower or blade is damaged: do not use the lawn mower or blade and consult a STIHL specialist dealer.
- If warning signs are illegible or damaged: have the warning signs replaced by a STIHL specialist dealer.

18 Troubleshooting

18.1 Troubleshooting the lawn mower

Error	Cause	Remedy
The engine does not start.	The control bar for mowing is not pressed.	Start the engine as described in this User Manual.
	The fuel tank is empty.	Refuel the lawn mower.
	The fuel line is blocked.	Contact a STIHL authorized dealer.
	Inferior, dirty or old fuel in the tank.	Use fresh, good quality unleaded gasoline.
	The air filter is dirty.	Clean or replace the air filter as described in the User Manual for the engine.
	The spark plug boot is detached from the spark plug, or the ignition cable is not properly connected to the boot.	<ul style="list-style-type: none"> ► Attach the spark plug boot. ► Check the connection between the ignition cable and boot.
	The spark plug is dirty, damaged or has an incorrect electrode gap.	<ul style="list-style-type: none"> ► Clean or replace the spark plug. ► Adjust the electrode gap.
	The resistance on the blade is too high.	<ul style="list-style-type: none"> ► Increase the cutting height. ► Start the engine in lower grass.
	The throttle lever is in the "Stop" position.	<ul style="list-style-type: none"> ► Move the throttle lever to the "Start" position. ► If the error persists: Do not use the lawn mower and instead consult a STIHL authorized dealer.
The engine is difficult to start, or the engine power is reduced.	The throttle cable is disengaged, kinked or defective.	<ul style="list-style-type: none"> ► Attach or replace the throttle cable. ► If the error persists: Do not use the lawn mower and instead consult a STIHL authorized dealer.
	The lawn mower housing is clogged.	Clean the lawn mower.
	The cutting height is set too low, or the rate of feed is too high.	Adapt the cutting height or mow more slowly.
	There is water in the fuel tank and the carburetor, or the carburetor is clogged.	Drain the fuel tank, clean the fuel line and the carburetor.
	The fuel tank is dirty.	Contact a STIHL authorized dealer.

Error	Cause	Remedy
The engine is overheating.	The air filter is dirty.	Clean or replace the air filter as described in the User Manual for the engine.
	The spark plug is dirty.	Clean or replace the spark plug.
	The engine oil level is too low.	Add or change the engine oil as described in the User Manual for the engine.
	The cooling fins are dirty.	Clean the lawn mower.
The lawn mower vibrates excessively.	The blade is damaged.	Replace the blade.
	The blade is not correctly installed.	Install the blade.
Grass is not being cut cleanly.	The blade is blunt or worn.	Sharpen or replace the blade.
Self-propulsion is not working.	The cable for self-propulsion is incorrectly adjusted.	<ul style="list-style-type: none"> ▶ Adjust the cable for self-propulsion. ▶ If the error persists: Do not use the lawn mower and instead consult a STIHL authorized dealer.

19 Specifications

19.1 STIHL RM 655.1 VS Lawn Mower

- Engine type: Kohler HD775
- Displacement: 173 cm³
- Engine power (P): 2.6 kW (3.5 PS) at 2800/min
- Engine speed (n): 2800rpm
- Max. fuel tank capacity: 1.4 l
- Weight (m): 50 kg
- Maximum grass catcher box capacity: 70 l
- Cutting width: 53 cm
- Minimum travel speed: 2.6 km/h
- Maximum travel speed: 4.6 km/h

19.2 Blade

- Minimum thickness a: 2.0 mm
- Minimum width b: 55 mm
- Sharpening angle c: 30°

19.3 Sound and vibration values

The K-value for the sound pressure level is 2 dB(A). The K-value for the sound power level is 1.2 dB(A). The K-value for the vibration level is 1.90 m/s².

- Sound pressure level L_{pA} measured according to EN ISO 5395-2: 84 dB(A)
- Guaranteed sound power level $L_{WA d}$ measured in accordance with 2000/14/EC: 98 dB(A)
- Vibration value a_{hv} of the handlebar, measured according to EN ISO 5395-2: 3.80 m/s²

For information on compliance with the Physical Agents (Vibration) Directive 2002/44/EC, see www.stihl.com/vib.


19.4 REACH

REACH is an EC regulation and stands for the Registration, Evaluation, Authorisation and Restriction of Chemical substances.

For information on compliance with the REACH regulation see www.stihl.com/reach.

20 Spare Parts and Accessories

20.1 Spare parts and accessories

STIHL  These symbols indicate original STIHL spare parts and original STIHL accessories.

STIHL recommends the use of original STIHL spare parts and accessories.

Despite ongoing market observation, STIHL is unable to judge the reliability, safety and suitability of other manufacturers' spare parts and accessories; accordingly, STIHL cannot warrant for the use of those parts.

Original STIHL spare parts and original STIHL accessories are available from STIHL dealers.

20.2 Important spare parts

- Blade: 6374 702 0100
- Blade mounting screw: 9008 319 9075
- Washer: 0000 702 6600

21 Disposal

21.1 Disposing of the Lawn Mower

Information on disposal is available from your local authority or from a STIHL dealer.

Improper disposal may be harmful to health and pollute the environment.

- ▶ Take STIHL products including packaging to a suitable collection point for recycling in accordance with local regulations.
- ▶ Do not dispose of the product with domestic waste.

22 EC Declaration of Conformity

22.1 STIHL RM 655.1 VS Lawn Mower

STIHL Tirol GmbH
Hans Peter Stihl-Straße 5
6336 Langkampfen

Austria

declares under our sole responsibility that

- Category: lawn mower
- Manufacturer's brand: STIHL
- Model: RM 655.1 VS
- Cutting width: 53 cm
- Serial identification number: 6374

conforms to the relevant provisions of Directives 2000/14/EC, 2006/42/EC, 2014/30/EU and 2011/65/EU and has been developed and manufactured in compliance with the following standards in the versions valid on the date of production: EN ISO 5395-1, EN ISO 5395-2 and EN ISO 14982.

Participating notified body:
TÜV Rheinland LGA Products GmbH
Tillystraße 2
90431 Nürnberg, DE

The measured and guaranteed sound power levels were determined according to Directive 2000/14/EC, Appendix VIII.

Measured sound power level: 97.2 dB(A)

Guaranteed sound power level: 98 dB(A)

The technical documents are stored at STIHL Tirol GmbH.

The year of manufacture and machine number are indicated on the lawn mower.

Langkampfen, 15 -10.2025

STIHL Tirol GmbH

pp 

Matthias Fleischer, Head of Product Development

pp 

Sven Zimmermann, Head of Quality Department

23 UKCA Declaration of Conformity

23.1 STIHL RM 655.1 VS Lawn mower

STIHL Tirol GmbH
Hans Peter Stihl-Straße 5
6336 Langkampfen

Austria

declares under our sole responsibility that

- Category: lawn mower
- Manufacturer's brand: STIHL
- Model: RM 655.1 VS
- Cutting width: 53 cm
- Serial identification number: 6374

conforms to the relevant provisions of UK regulations Noise Emission in the Environment by Equipment for Use Outdoors Regulations 2001, Supply of Machinery (Safety) Regulations 2008, Electromagnetic Compatibility Regulations 2016 and Restrictions of the Use of Certain Hazardous Substances in Electrical and Electronic Equipment Regulations 2012 and has been manufactured in compliance with the following standards in the versions valid on the date of production: EN ISO 5395-1, EN ISO 5395-2 und EN ISO 14982.

Participating notified body:
TUV Rheinland UK LTD
1011 Stratford Road
Solihull, B90 4BN

The measured and guaranteed sound power levels were determined in accordance with the UK regulation Noise Emission in the Environment by Equipment for Use Outdoors Regulations 2001, Schedule 11.

- Measured sound power level: 97.2 dB(A)
- Guaranteed sound power level: 98 dB(A)

The technical documents are stored at STIHL Tirol GmbH.

The year of manufacture and machine number are indicated on the lawn mower.

Langkampfen, 15-10-2025

STIHL Tirol GmbH

pp 

Matthias Fleischer, Head of Product Development

pp 

Sven Zimmermann, Head of Quality Department

24 Addresses

www.stihl.com

Table des matières

1	Préface.....	43
2	Informations concernant la présente Notice d'emploi.....	43
3	Vue d'ensemble.....	44
4	Prescriptions de sécurité.....	45
5	Préparation de la tondeuse.....	51
6	Assemblage de la tondeuse à gazon.....	52
7	Plein de carburant de la tondeuse.....	54
8	Réglage de la tondeuse pour l'utilisateur..	54
9	Mise en route et arrêt du moteur.....	55
10	Contrôle de la tondeuse.....	56
11	Utilisation de la tondeuse.....	56
12	Après le travail.....	58
13	Transport.....	58
14	Rangement.....	59
15	Nettoyage.....	59
16	Maintenance.....	60
17	Réparation.....	61
18	Dépannage.....	61
19	Caractéristiques techniques.....	62
20	Pièces de rechange et accessoires.....	63
21	Mise au rebut.....	63
22	Déclaration de conformité UE.....	63
23	Déclaration de conformité UKCA.....	64
24	Adresses.....	64

1 Préface

Chère cliente, cher client,

0478-111-9963-A

Nous vous remercions d'avoir choisi un produit STIHL. Dans le développement et la fabrication de nos produits, nous mettons tout en œuvre pour garantir une excellente qualité répondant aux besoins de nos clients. Nos produits se distinguent par une grande fiabilité, même en cas de sollicitations extrêmes.

STIHL garantit également la plus haute qualité au niveau du service après-vente. Nos revendeurs spécialisés fournissent des conseils compétents, aident nos clients à se familiariser avec nos produits et assurent une assistance technique complète.

STIHL se déclare résolument en faveur d'un développement durable et d'une gestion responsable de la nature. La présente Notice d'emploi vous aidera à utiliser votre produit STIHL en toute sécurité et dans le respect de l'environnement, pendant toute sa longue durée de vie.

Nous vous remercions de votre confiance et vous souhaitons beaucoup de plaisir avec votre produit STIHL.



Dr. Nikolas Stihl

IMPORTANT ! LIRE CETTE NOTICE AVANT D'UTILISER CE PRODUIT ET LA CONSERVER PRÉCIEUSEMENT.

2 Informations concernant la présente Notice d'emploi

2.1 Documents applicables

Le présent manuel est une traduction du manuel d'utilisation d'origine du fabricant, conformément à la directive CE 2006/42/EC.

Les consignes de sécurité locales s'appliquent.

- Lire, comprendre et conserver les documents suivants, en plus du présent manuel d'utilisation :
 - Notice d'utilisation du moteur Kohler HD775